

LOC/DME I-CUE 110.55 Chan 42 (Y)	APP CRS 184°	Rwy Idg TDZE 777 Apt Elev 777	5502
--	------------------------	---	-------------

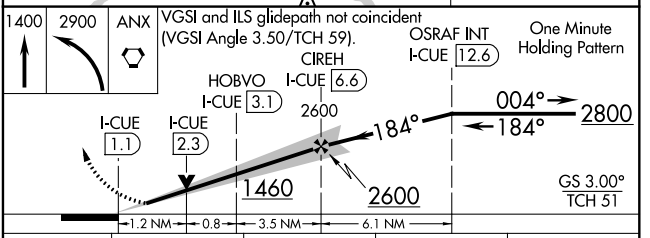
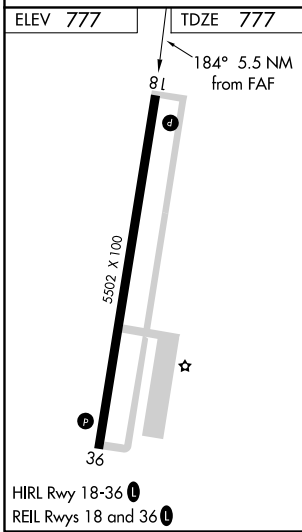
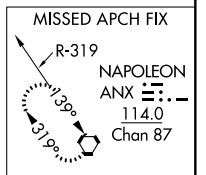
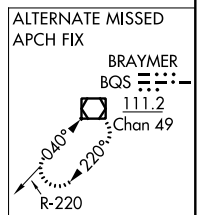
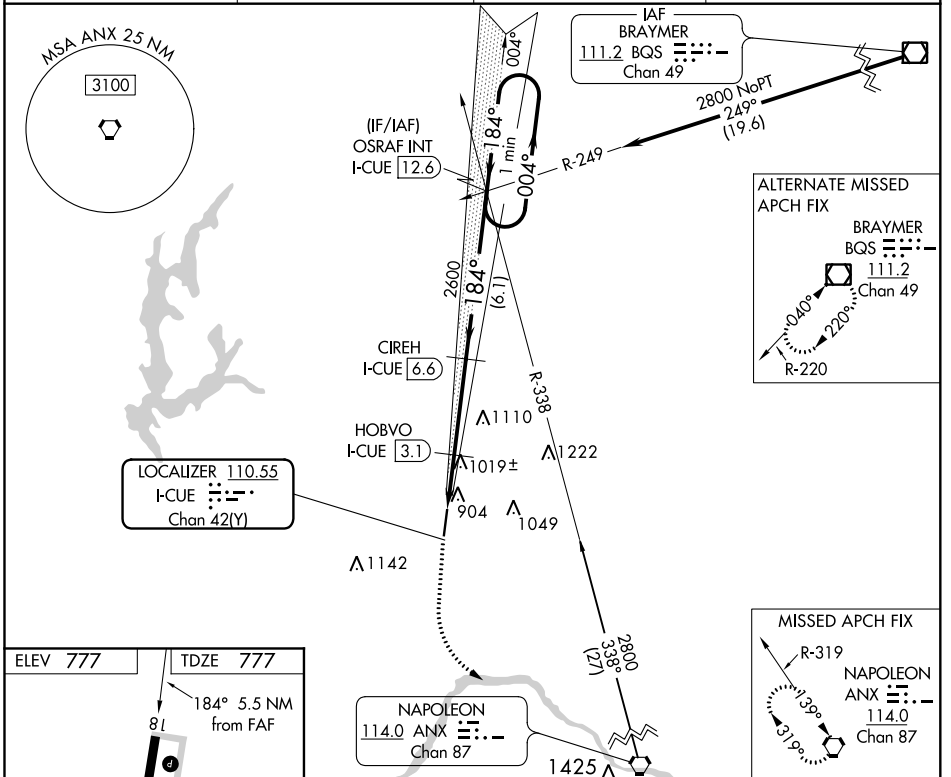
ILS or LOC/DME RWY 18

MIDWEST NTL AIR CENTER (GPH)

NA Obtain local altimeter setting on CTAF; when not received use Kansas City Intl altimeter setting and increase DA 79 feet and all visibilities ¼ mile; increase all MDAs 80 feet, and Circling visibility Cat C ¼ mile.

MISSED APPROACH: Climb to 1400 then climbing left turn to 2900 direct ANX VORTAC and hold.

AWOS-3T 120.275	KANSAS CITY APP CON 118.4 307.35	CLNC DEL 118.2	UNICOM 122.7 (CTAF)
---------------------------	--	--------------------------	-------------------------------



CATEGORY	A	B	C	D
S-ILS 18	977-¾ 200 (200-¾)			NA
S-LOC 18	1280-1	503 (600-1)	1280-1½ 503 (600-1½)	NA
CIRCLING	1300-1 523 (600-1)	1320-1 543 (600-1)	1360-1½ 583 (600-1½)	NA

NC-3, 09 SEP 2021 to 07 OCT 2021

NC-3, 09 SEP 2021 to 07 OCT 2021