

APP CRS	Rwy Idg	3701
003°	TDZE	82
	Apt Elev	82

RNAV (GPS) RWY 36

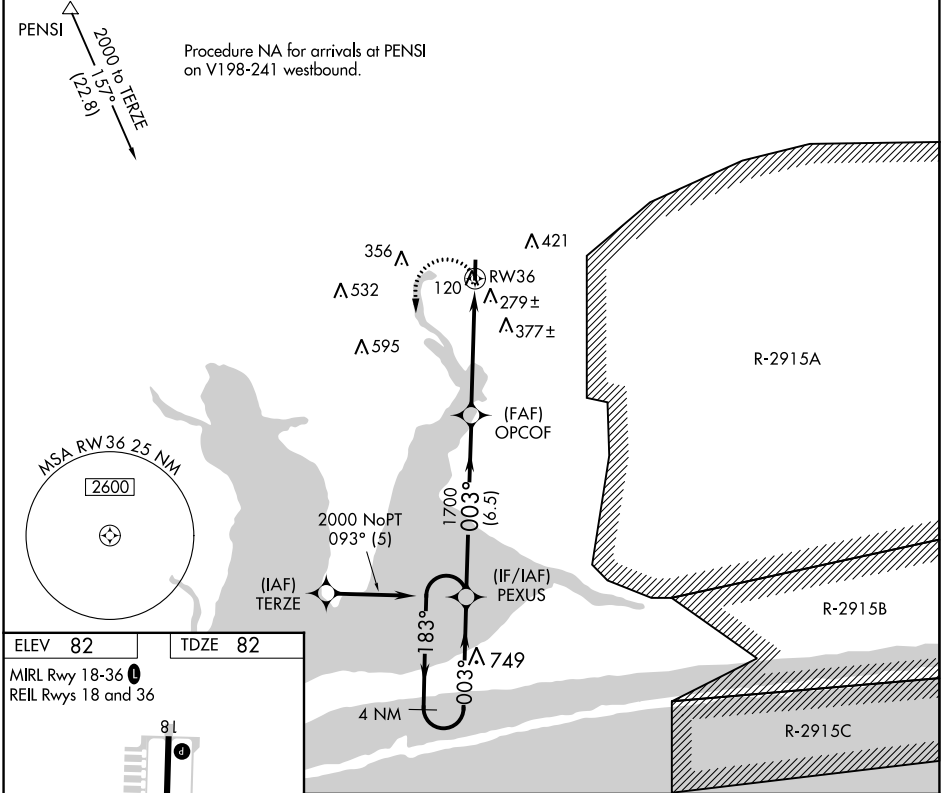
PETER PRINCE FIELD (2R4)

RNP APCH.

NA Rwy 36 helicopter visibility reduction below 1 SM NA.
 Use Pensacola Intl altimeter setting; when not received, use Crestview altimeter setting and increase all MDA 40 feet; increase LNAV visibility Cat C 1/8 SM. Procedure NA at night.

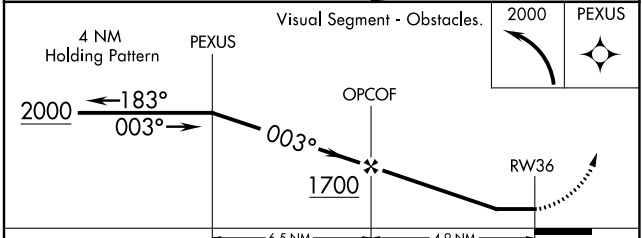
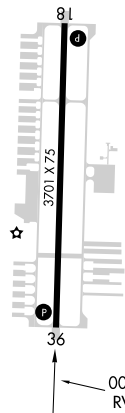
MISSED APPROACH:
 Climbing left turn to 2000
 direct PEXUS and hold.

PENSACOLA APP CON	GCO	AUNICOM
124.85 235.775	121.725	122.975 (CTAF)



ELEV 82	TDZE 82
---------	---------

MIRL Rwy 18-36
 REIL Rwys 18 and 36



CATEGORY	A	B	C	D
LNAV MDA	580-1	498 (500-1)	580-1 3/8 498 (500-1 3/8)	NA
CIRCLING	700-1	618 (700-1)	700-1 3/4 618 (700-1 3/4)	NA

SE-3, 09 SEP 2021 to 07 OCT 2021

SE-3, 09 SEP 2021 to 07 OCT 2021