

RNAV (GPS) Y RWY 9

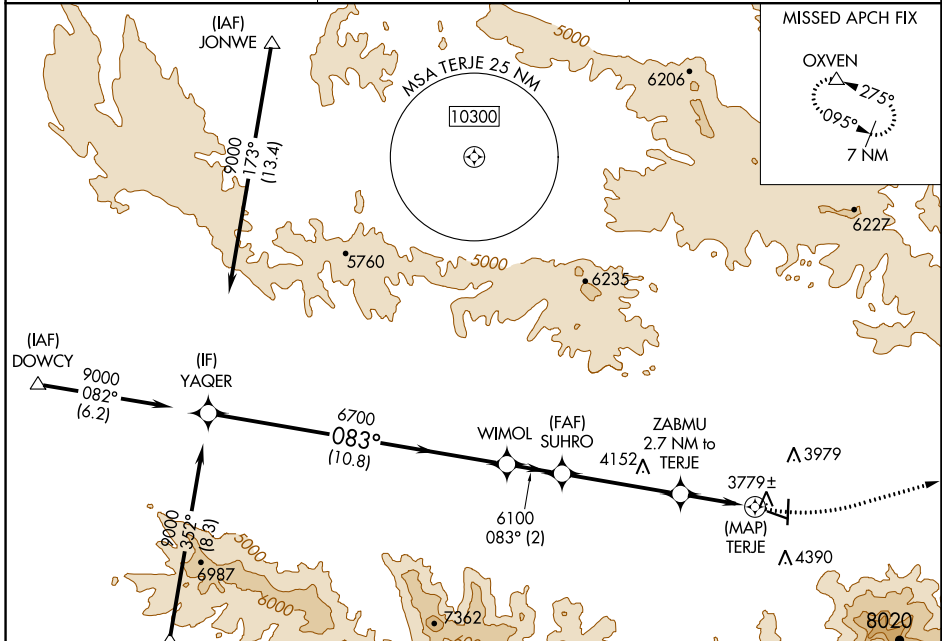
GRANT COUNTY RGNL/OGLIVIE FLD (GCD)

APP CRS 083°	Rwy Idg 4471
	TDZE 3669
	Apt Elev 3703

⚠ When local altimeter setting not received, procedure NA.
⚠ Circling NA south of Rwy 9-27. DME/DME RNP-0.3 NA.
 Helicopter visibility reduction below 3/4 SM not authorized.

MISSED APPROACH: Climbing left turn to 12000 direct OXVEN and hold, continue climb-in-hold to 12000.

AWOS-3 118.375	SEATTLE CENTER 128.15 257.75	UNICOM 122.8 (CTAF) 0
--------------------------	--	---------------------------------



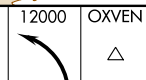
NW-1, 09 SEP 2021 to 07 OCT 2021

NW-1, 09 SEP 2021 to 07 OCT 2021

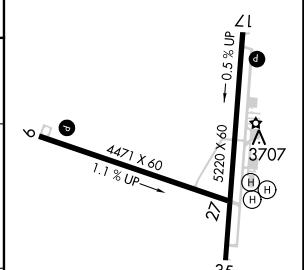
ELEV 3703	TDZE 3669
-----------	-----------



VGSI and descent angles not coincident (VGSI Angle 3.00/TCH 45).



YAQER	WIMOL	SUHRO	ZABMU 2.7 NM to TERJE	TERJE
9000	6700	6100	4700	3703
10.8 NM		2 NM	4.3 NM	2.7 NM



CATEGORY	A	B	C	D
LNAV MDA	4280-1	611 (600-1)	4280-1 3/4 611 (600-1 3/4)	NA
CIRCLING	4280-1 577 (600-1)	4520-1 1/4 817 (900-1 1/4)	5160-3 1457 (1500-3)	NA

REIL Rwy 17 and 9 0
 MIRL Rwy 9-27 and 17-35 0