

WAAS CH 73010 W09A	APP CRS 091°	Rwy Idg TDZE Apt Elev	4471 3669 3703
--	------------------------	-----------------------------	---

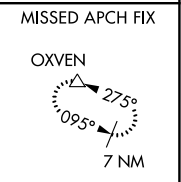
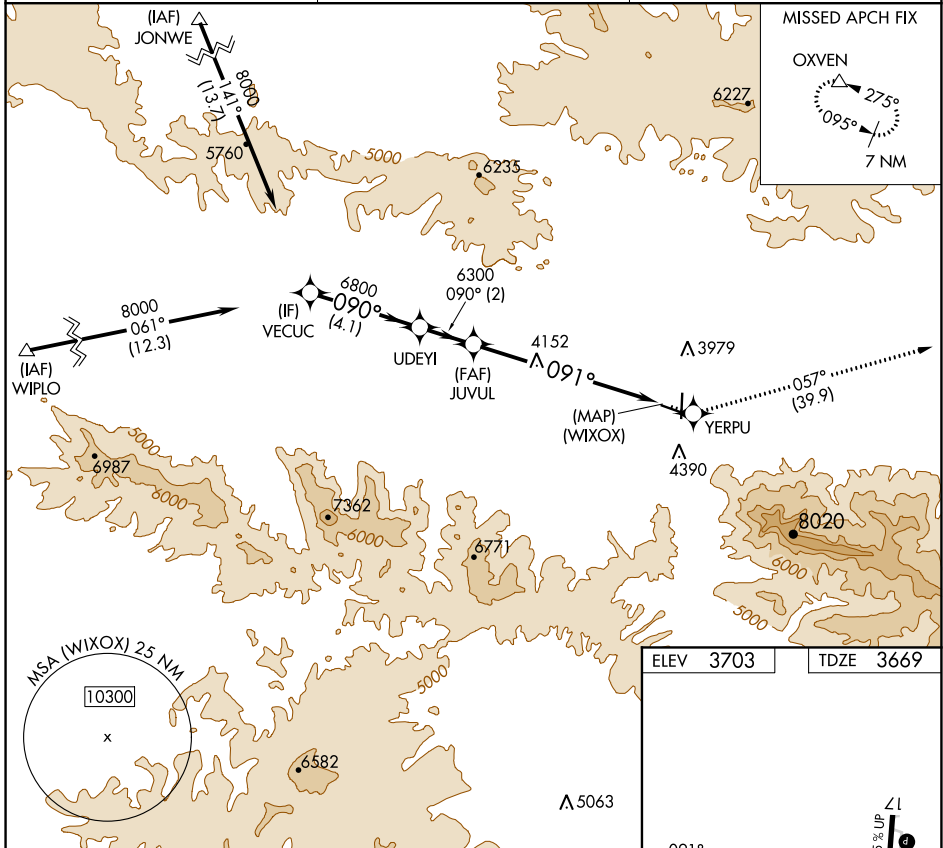
RNAV (GPS) Z RWY 9

GRANT COUNTY RGNL/OGILVIE FLD (GCD)

▼ When local altimeter setting not received, procedure NA. DME/DME RNP-0.3 NA. Helicopter visibility reduction below 3/4 SM NA.

MISSED APPROACH: Climb to 12000 direct YERPU and on track 057° to OXVEN and hold, continue climb-in-hold to 12000.

AWOS-3 118.375	SEATTLE CENTER 128.15 257.75	UNICOM 122.8 (CTAF) 0
--------------------------	--	---------------------------------



NW-1, 09 SEP 2021 to 07 OCT 2021

NW-1, 09 SEP 2021 to 07 OCT 2021

VEUCUC		UDEYI		JUUVUL		12000		YERPU		OXVEN	
8000		6800		6300		↑		✧		△	
GP 3.40°		6300		6300		tr 057°		(WIXOX)			
TCH 54		4.1 NM		2 NM		7.1 NM					
CATEGORY	A	B	C	D							
LPV DA	4269-2			600 (600-2)		NA					
ELEV 3703		TDZE 3669									
REIL Rwys 17 and 9 0		MIRL Rwys 9-27 and 17-35 0									

