

WAAS CH 45926 W03A	APP CRS 027°	Rwy Idg TDZE Apt Elev	5003 530 537
--	------------------------	-----------------------------	---

RNAV (GPS) RWY 3

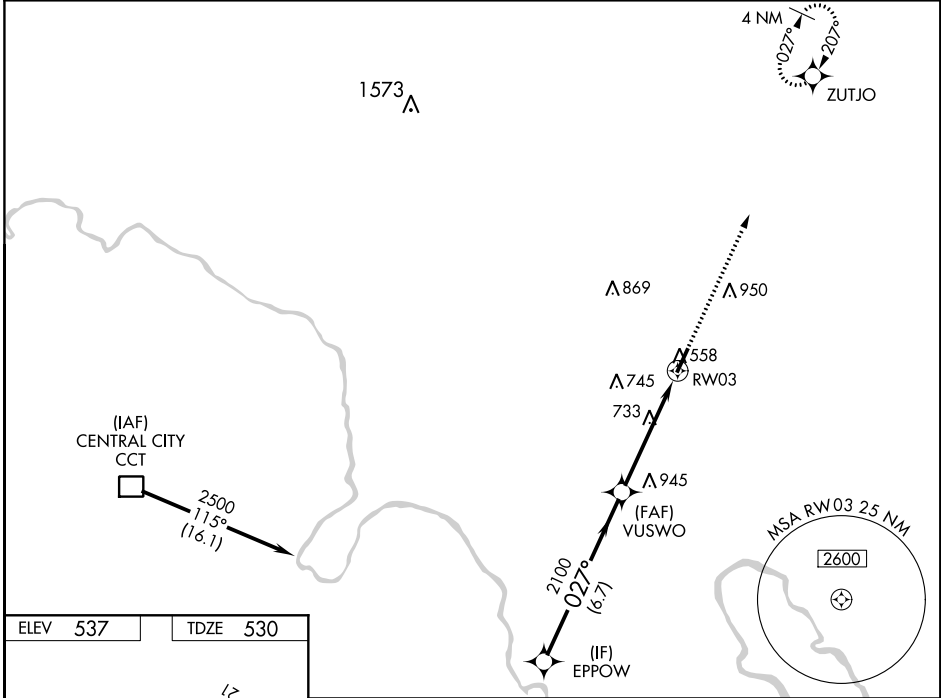
OHIO COUNTY (JQD)

RNP APCH - GPS.

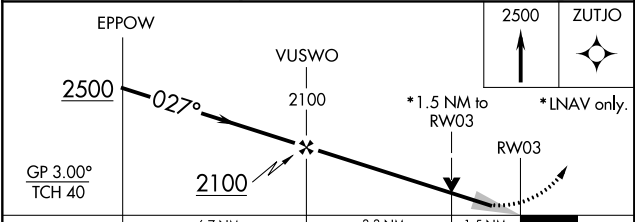
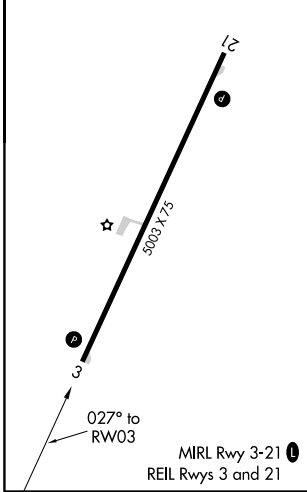
⚠ Baro-VNAV and VDP NA when using Owensboro altimeter setting. For uncompensated Baro-VNAV systems, LNAV/VNAV NA below -16°C or above 54°C. When local altimeter setting not received, use Owensboro altimeter setting and increase LPV and LNAV/VNAV DA to 851 feet. Increase all MDA 80 feet and LNAV Cat C visibility 3/8 SM and Circling Cat C visibility 1/4 SM. Circling Rwy 21 NA at night. Rwy 3 helicopter visibility reduction below 3/4 SM NA.

MISSED APPROACH:
Climb to 2500 direct ZUTJO and hold.

AWOS-3PT 132.1	EVANSVILLE APP CON ★ 124.025 290.9	UNICOM 122.8 (CTAF) 0
--------------------------	--	---------------------------------



ELEV 537	TDZE 530
----------	----------



CATEGORY	A	B	C	D
LPV DA	780-1	250 (300-1)		NA
LNAV/VNAV DA	780-1	250 (300-1)		NA
LNAV MDA	1040-1	510 (600-1)	1040-1 3/8 510 (600-1 3/8)	NA
C CIRCLING	1040-1 503 (600-1)	1100-1 563 (600-1)	1300-2 1/4 763 (800-2 1/4)	NA

SE-1, 09 SEP 2021 to 07 OCT 2021

SE-1, 09 SEP 2021 to 07 OCT 2021