

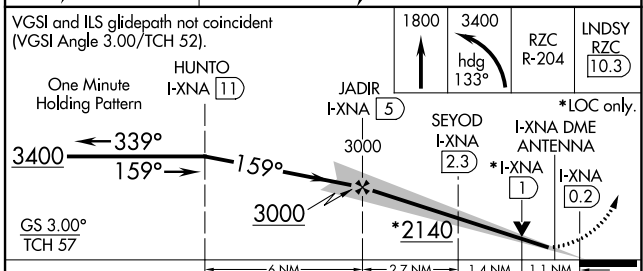
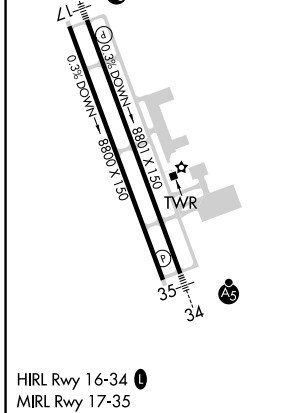
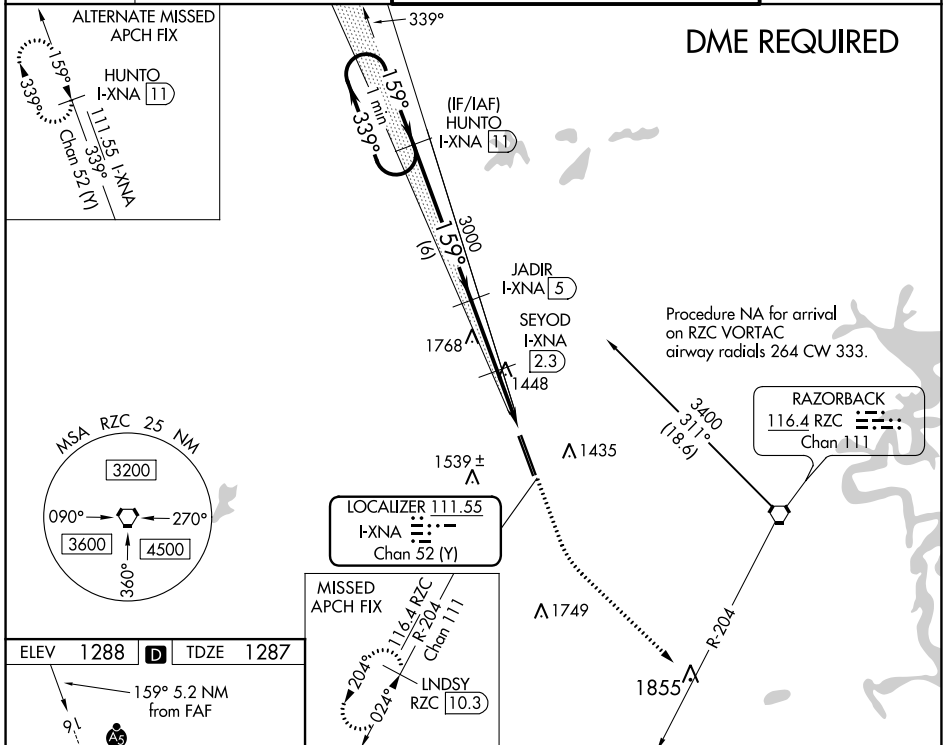
LOC/DME I-XNA 111.55 Chan 52 (Y)	APP CRS 159°	Rwy ldg TDZE 8800 1287	Apt Elev 1288
---	------------------------	--	-------------------------

ILS or LOC RWY 16

NORTHWEST ARKANSAS NTL (X.NA)

<p>⚠ DME required. For inop ALS increase visibility S-ILS 16 Cat E to RVR 4000 and S-LOC 16 Cat C/D/E to RVR 6000. ** RVR 1800 authorized with use of FD or AP or HUD to DA.</p>	<p>MALSR</p>	<p>MISSED APPROACH: Climb to 1800 then climbing left turn to 3400 on heading 133° and RZC VORTAC R-204 to LINDSY/RZC 10.3 DME and hold.</p>
---	--------------	---

ATIS 119.425	RAZORBACK APP CON * 121.0 244.575	NORTHWEST ARKANSAS NTL TOWER * 127.1 (CTAF) 0	GND CON 121.9
------------------------	---	---	-------------------------



CATEGORY	A	B	C	D	E
S-ILS 16	**1487/24 200 (200-1/2)				
S-LOC 16	1700/24	413 (500-1/2)	1700/40	413 (500-3/4)	
CIRCLING	1740-1 452 (500-1)	1760-1 472 (500-1)	2040-2 1/4 752 (800-2 1/4)	2080-2 1/2 792 (800-2 1/2)	2080-2 3/4 792 (800-2 3/4)

SC-1, 09 SEP 2021 to 07 OCT 2021

SC-1, 09 SEP 2021 to 07 OCT 2021