

LOC/DME I-FBS <b>111.55</b>	APP CRS <b>339°</b>	Rwy Idg TDZE Apt Elev	<b>8800</b> <b>1273</b> <b>1288</b>
Chan <b>52(Y)</b>			

# ILS or LOC RWY 34

NORTHWEST ARKANSAS NTL (XNA)

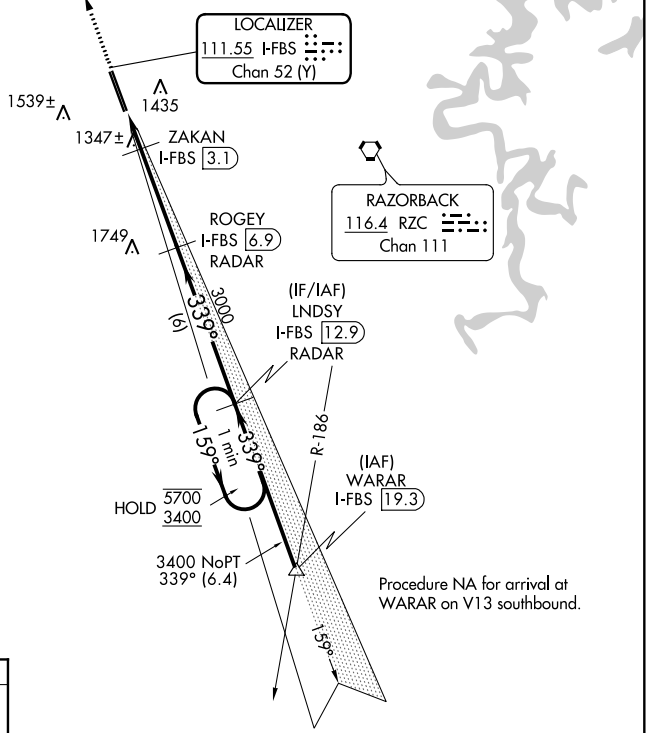
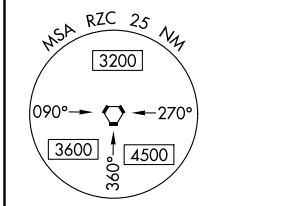
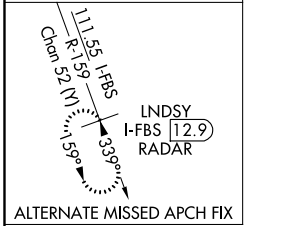
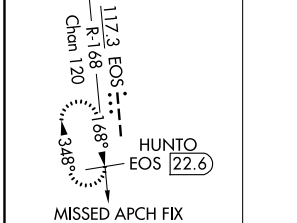
DME required.

▼ For inop ALS, increase visibility S-ILS 34 Cat E to RVR 4000 and S-LOC 34 Cat C/D/E to RVR 5000.

▲ #RVR 1800 authorized with use of FD or AP or HUD to DA.

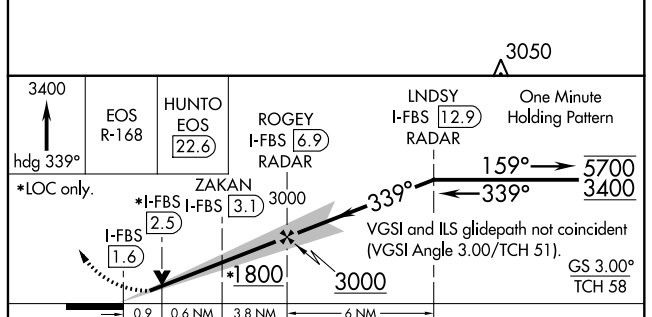
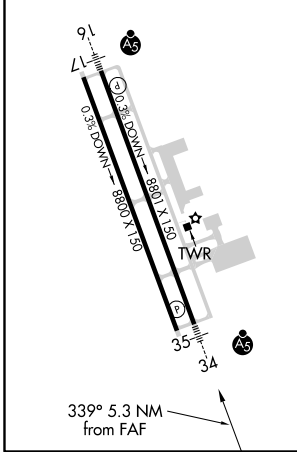
MALSRS MISSED APPROACH: Climb to 3400 on heading 339° and EOS VOR/DME R-168 to HUNTO/EOS VOR/DME 22.6 DME and hold.

ATIS <b>119.425</b>	RAZORBACK APP CON * <b>121.0 244.575</b>	NORTHWEST ARKANSAS NTL TOWER * <b>127.1 (CTAF) 0</b>	GND CON <b>121.9</b>
------------------------	---	---	-------------------------



Procedure NA for arrival at WARAR on V13 southbound.

ELEV <b>1288</b>	<b>D</b> TDZE <b>1273</b>
HIRL Rwy 16-34	
MIRL Rwy 17-35	



CATEGORY	A	B	C	D	E
S-ILS 34 #	1473/24 200 (200-½)				
S-LOC 34	1600/24	327 (400-½)	1600/26 327 (400-½)		
CIRCLING	1740-1 452 (500-1)	1760-1 472 (500-1)	2040-2¼ 752 (800-2¼)	2080-2½ 792 (800-2½)	2080-2¾ 792 (800-2¾)

SC-1, 09 SEP 2021 to 07 OCT 2021

SC-1, 09 SEP 2021 to 07 OCT 2021