

WAAS CH <b>72899</b> <b>W16A</b>	APP CRS <b>159°</b>	Rwy Idg 8800 TDZE 1287 Apt Elev 1288
--	------------------------	---

# RNAV (GPS) RWY 16

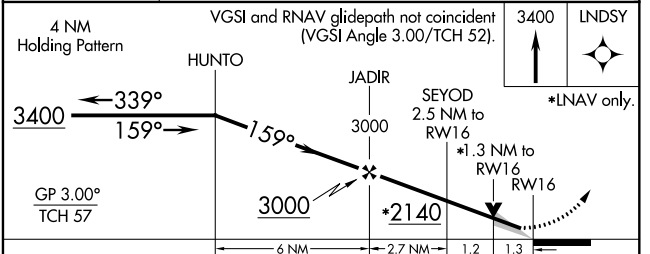
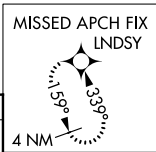
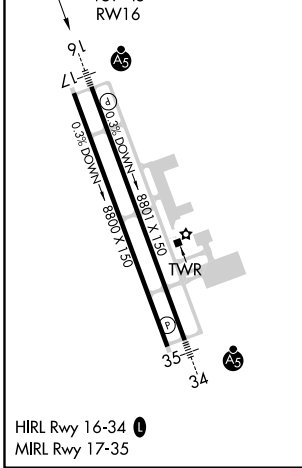
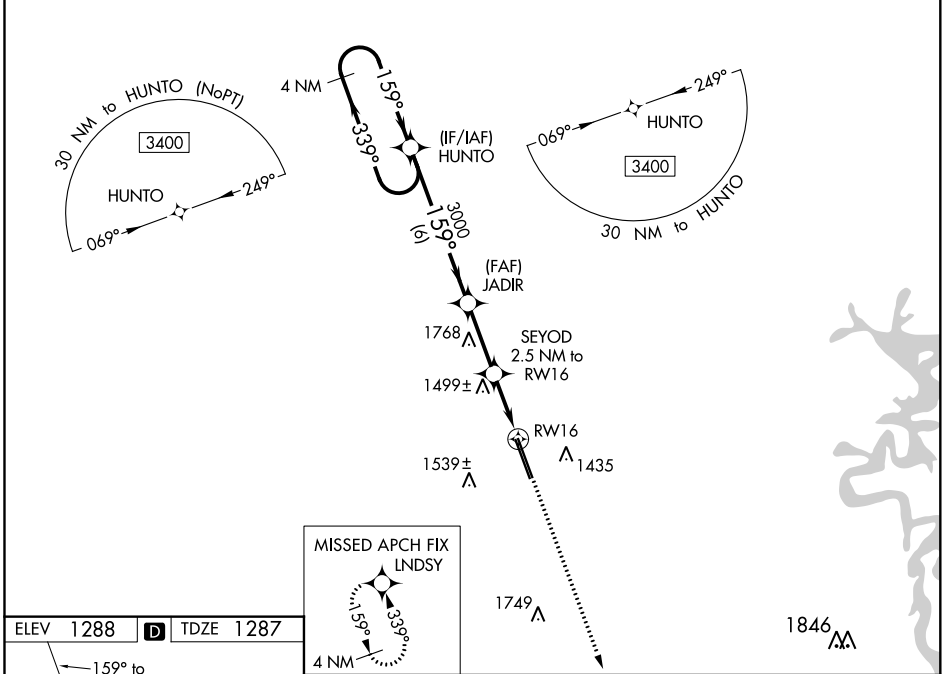
NORTHWEST ARKANSAS NTL (XNA)

**⚠** For uncompensated Baro-VNAV systems, LNAV/VNAV NA below -15°C (5°F) or above 54°C (130°F). DME/DME RNP-0.3 NA. For inop ALS increase LPV Cat E visibility to RVR 4000, LNAV/VNAV all Cats and LNAV Cat C/D/E visibility to 1 3/8 mile. \*\* RVR 1800 authorized with use of FD or AP or HUD to DA.



**MISSED APPROACH:**  
Climb to 3400 direct  
LNDYSY and hold.

ATIS <b>119.425</b>	RAZORBACK APP CON * <b>121.0 244.575</b>	NORTHWEST ARKANSAS NTL TOWER * <b>127.1 (CTAF) 0</b>	GND CON <b>121.9</b>
------------------------	---	---	-------------------------



CATEGORY	A	B	C	D	E
LPV DA **		1487/24	200 (200-1/2)		
LNAV/VNAV DA		1722/50	435 (500-1)		
LNAV MDA	1760/24	473 (500-1/2)	1760/50	473 (500-1)	
<b>C</b> CIRCLING	1760-1	472 (500-1)	2040-2 1/4 752 (800-2 1/4)	2080-2 1/2 792 (800-2 1/2)	2080-2 3/4 792 (800-2 3/4)

SC-1, 09 SEP 2021 to 07 OCT 2021

SC-1, 09 SEP 2021 to 07 OCT 2021