

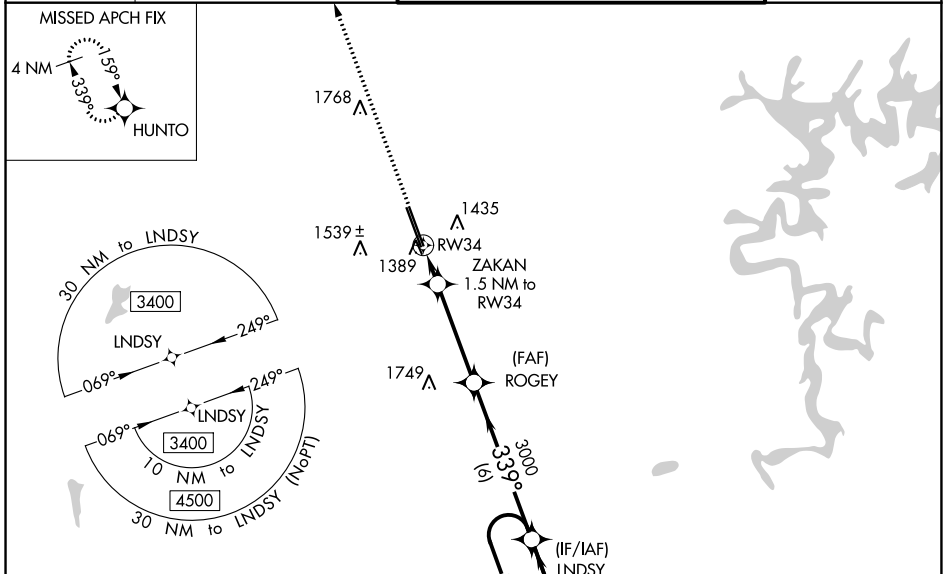
WAAS CH <b>78299</b> <b>W34A</b>	APP CRS <b>339°</b>	Rwy Idg TDZE Apt Elev	<b>8800</b> <b>1273</b> <b>1288</b>
--	------------------------	-----------------------------	---

# RNAV (GPS) RWY 34

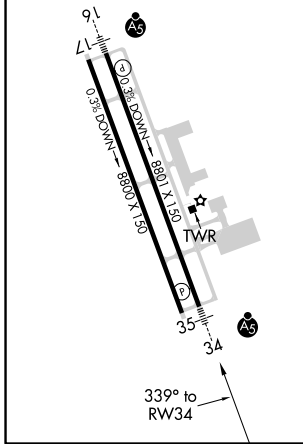
NORTHWEST ARKANSAS NTL (X.N.A)

<p><b>⚠</b> For uncompensated Baro-VNAV systems, LNAV/VNAV NA below -15°C (5°F) or above 54°C (130°F). DME/DME RNP-0.3 NA. For inop ALS, increase LPV Cat E visibility to RVR 4000, LNAV/VNAV all Cts visibility to RVR 4500, and LNAV Cts C/D/E visibility to RVR 5500. ** RVR 1800 authorized with use of FD or AP or HUD to DA.</p>	<p>MALSR</p>	<p>MISSED APPROACH: Climb to 3400 direct HUNTO and hold</p>

ATIS <b>119.425</b>	RAZORBACK APP CON * <b>121.0 244.575</b>	NORTHWEST ARKANSAS NTL TOWER * <b>127.1 (CTAF) 0</b>	GND CON <b>121.9</b>
------------------------	---	---	-------------------------



ELEV 1288	<b>D</b> TDZE 1273
HIRL Rwy 16-34 <b>1</b>	
MIRL Rwy 17-35	



SC-1, 09 SEP 2021 to 07 OCT 2021

SC-1, 09 SEP 2021 to 07 OCT 2021