

APP CRS	Rwy Idg	<b>4041</b>
<b>013°</b>	TDZE	<b>273</b>
	Apt Elev	<b>273</b>

# RNAV (GPS) RWY 2

TICONDEROGA MUNI (4B6)

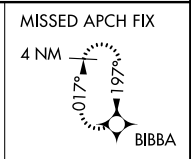
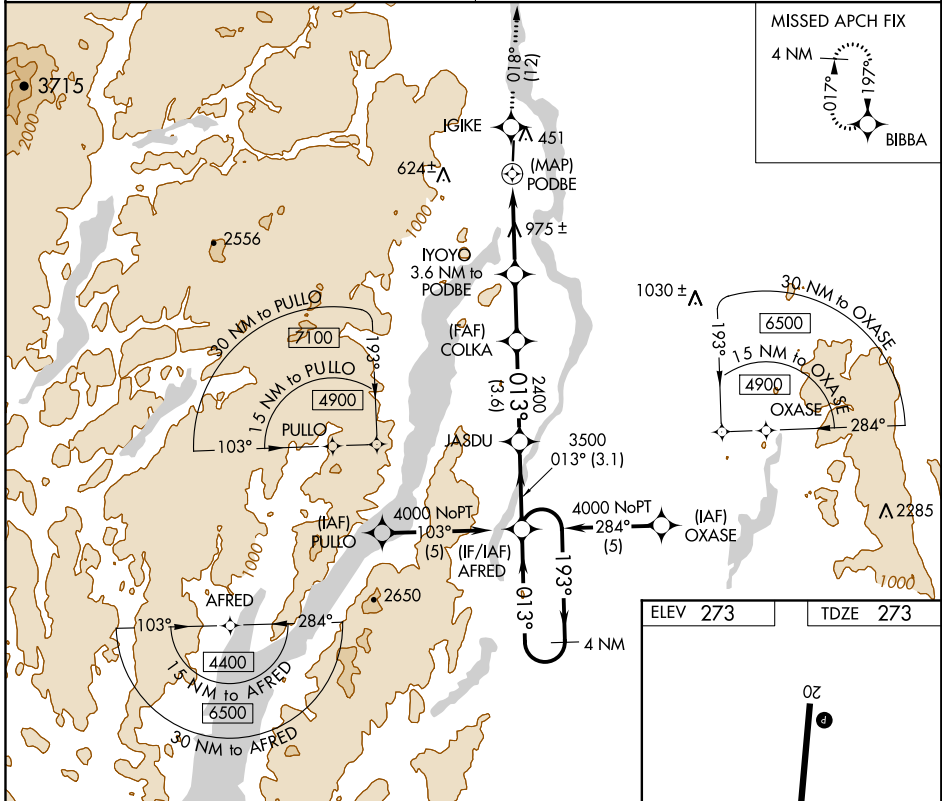
RNP APCH.

**NA** Use Burlington altimeter setting. Procedure NA at night.  
Rwy 2 helicopter visibility reduction below 1 SM NA.

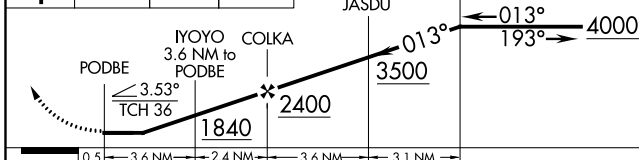
MISSED APPROACH: Climb to 4000 direct IGIKE and on track 018° to BIBBA and hold.

BOSTON CENTER  
**135.7 282.2**

UNICOM  
**122.8 (CTAF)**

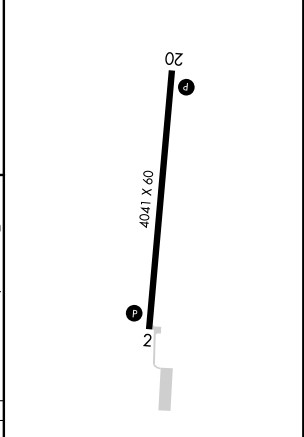


4000	IGIKE	tr 018°	BIBBA	VGSI and descent angles not coincident (VGSI Angle 3.00/TCH 46).
↑	◆		◆	4 NM Holding Pattern



CATEGORY	A	B	C	D
LNAV MDA	1520-1¼ 1247 (1300-1¼)	1520-1½ 1247 (1300-1½)		NA

ELEV 273	TDZE 273
----------	----------



NE-2, 09 SEP 2021 to 07 OCT 2021

NE-2, 09 SEP 2021 to 07 OCT 2021