

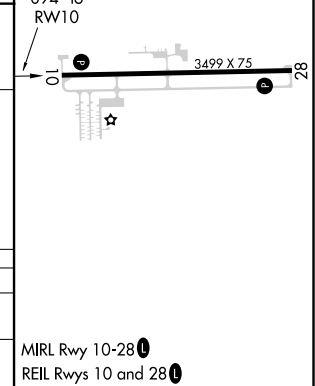
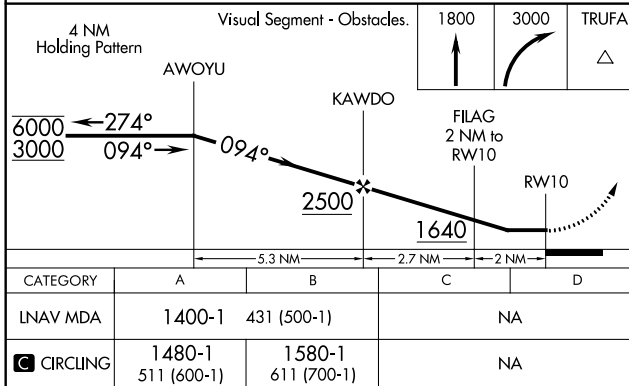
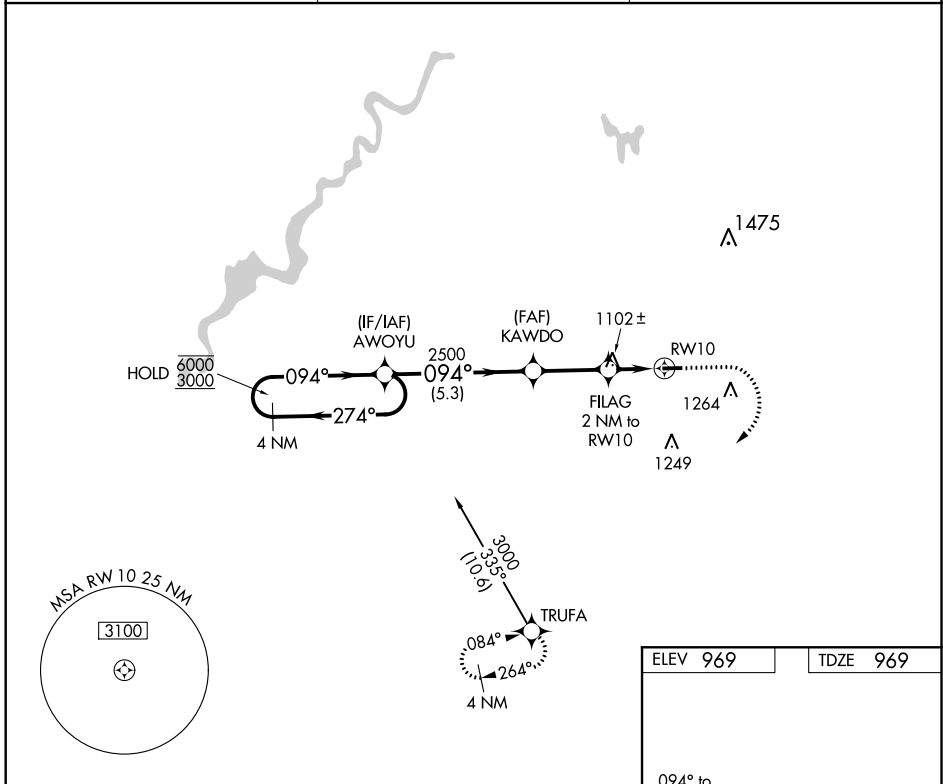
APP CRS	Rwy Idg	<b>3499</b>
<b>094°</b>	TDZE	<b>969</b>
	Apt Elev	<b>969</b>

# RNAV (GPS) RWY 10

LAKEVIEW-GRIFFITH FIELD (13C)

RNP APCH.	Procedure NA at night. Rwy 10 helicopter visibility reduction below 1 SM NA. Use Big Rapids altimeter setting.	MISSED APPROACH: Climb to 1800 then climbing right turn to 3000 direct TRUFA and hold.
⚠ NA		

RQB AWOS-3P <b>125.875</b>	GREAT LAKES APP CON * <b>124.6 257.6</b>	UNICOM <b>122.8 (CTAF) 1</b>
-------------------------------	---	---------------------------------



ELEV 969	TDZE 969
----------	----------

CATEGORY	A	B	C	D
LNVA MDA	1400-1	431 (500-1)	NA	
CIRCLING	1480-1 511 (600-1)	1580-1 611 (700-1)	NA	

EC-1, 09 SEP 2021 to 07 OCT 2021

EC-1, 09 SEP 2021 to 07 OCT 2021