

APP CRS <b>274°</b>	Rwy Idg <b>3499</b>
	TDZE <b>969</b>
	Apt Elev <b>969</b>

# RNAV (GPS) RWY 28

LAKEVIEW-GRIFFITH FIELD (13C)

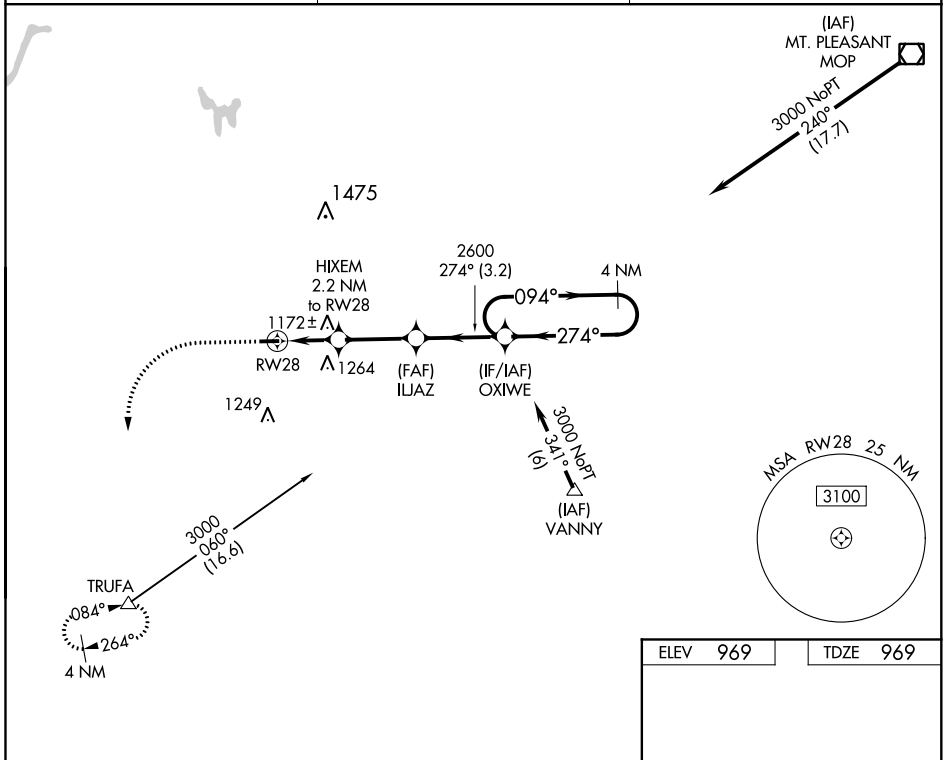
**NA** Use Big Rapids altimeter setting; when not received, use Mount Pleasant altimeter setting and increase all MDA 40 ft. DME/DME RNP-0.3 NA. Procedure NA at night. Helicopter visibility reduction below 1 SM NA.

**MISSED APPROACH:** Climb to 1800 then climbing left turn to 3000 direct TRUFA and hold.

RQB AWOS-3P <b>125.875</b>
-------------------------------

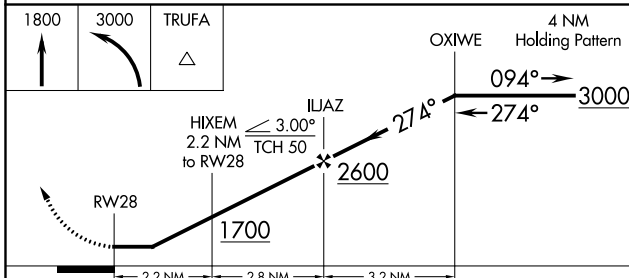
GREAT LAKES APP CON * <b>124.6 257.6</b>
---

UNICOM <b>122.8 (CTAF) 0</b>
---------------------------------



EC-1, 09 SEP 2021 to 07 OCT 2021

EC-1, 09 SEP 2021 to 07 OCT 2021



ELEV 969	TDZE 969
----------	----------

CATEGORY	A	B	C	D
LNAV MDA	1480-1	511 (600-1)	NA	
<b>C</b> CIRCLING	1480-1 511 (600-1)	1580-1 611 (700-1)	NA	

