

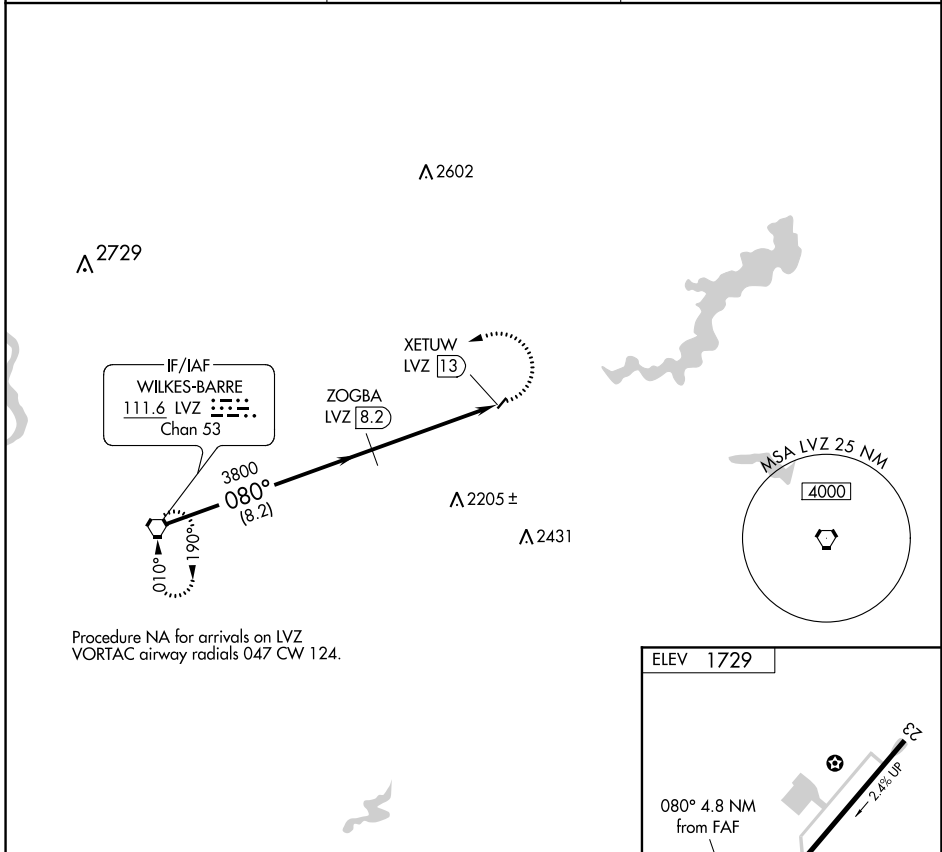
VORTAC LVZ <b>111.6</b> Chan <b>53</b>	APP CRS <b>080°</b>	Rwy Idg TDZE Apt Elev	<b>N/A</b> <b>N/A</b> <b>1729</b>
--	------------------------	-----------------------------	---

**VOR/DME-B**  
SPRING HILL (70N)

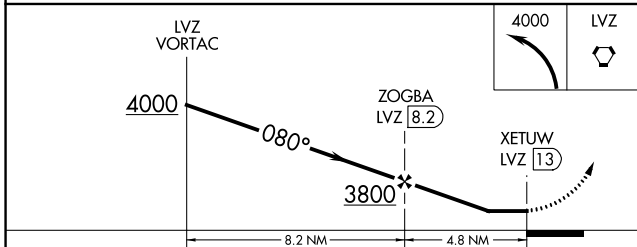
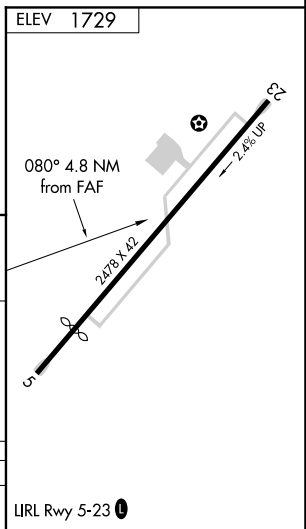
▼ Procedure NA at night. Use Mount Pocono altimeter setting, when not received, use Wilkes-Barre/Scranton altimeter setting and increase all MDA 100 feet and ▲ NA  
Cat B Circling visibility ½ mile. Helicopter visibility reduction below 1 SM NA.

MISSED APPROACH: Climbing left turn to 4000 direct LVZ VORTAC and hold.

MPO ASOS <b>120.275</b>	WILKES-BARRE APP CON <b>126.3 256.7</b>	CTAF <b>122.9</b>
----------------------------	--	-------------------



Procedure NA for arrivals on LVZ VORTAC airway radials 047 CW 124.



CATEGORY	A	B	C	D
✈️ CIRCLING	2600-1¼ 871 (900-1¼)	2620-1¼ 891 (900-1¼)	NA	

IIRL Rwy 5-23

NE-4, 09 SEP 2021 to 07 OCT 2021

NE-4, 09 SEP 2021 to 07 OCT 2021