

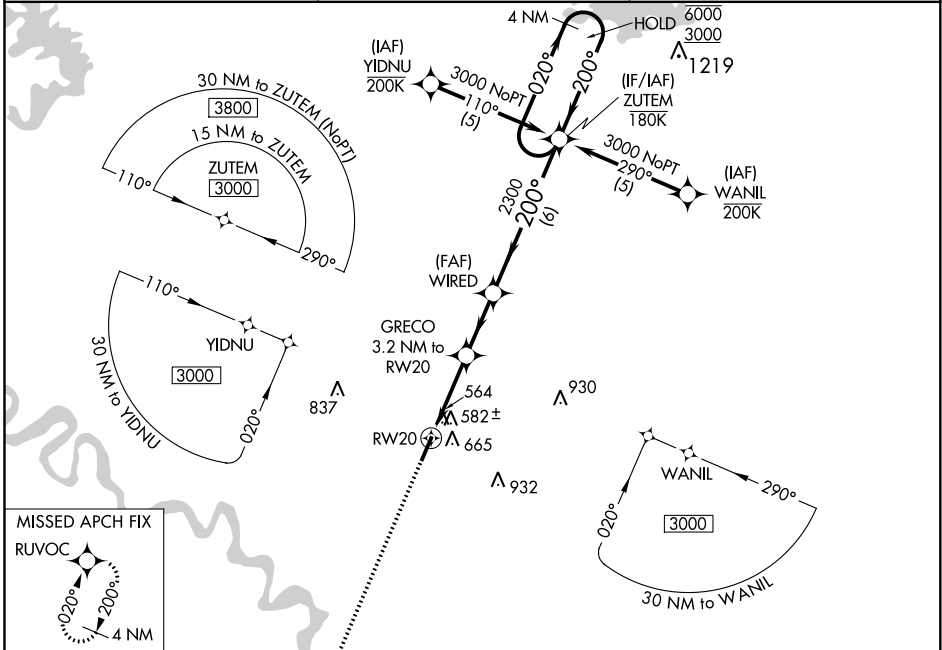
WAAS CH 69442 W20A	APP CRS 200°	Rwy Idg 5002 TDZE 463 Apt Elev 472
--	------------------------	---

RNAV (GPS) RWY 20

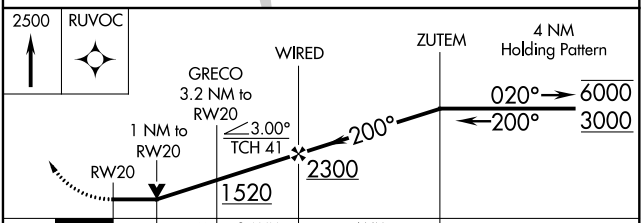
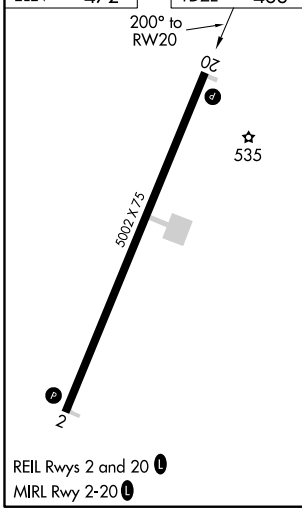
MC CURTAIN COUNTY RGNL (404)

RNP APCH.	MISSED APPROACH: Climb to 2500 direct RUVOC and hold.
Rwy 20 helicopter visibility reduction below 3/4 SM NA.	

AWOS-3 120.0	FORT WORTH CENTER 123.925 269.475	UNICOM 122.8 (CTAF)
------------------------	---	-------------------------------



ELEV 472	TDZE 463
----------	----------



CATEGORY	A	B	C	D
LP MDA		820-1	357 (400-1)	NA
LNAV MDA		840-1	377 (400-1)	NA
CIRCLING	1020-1	548 (600-1)	1100-13/4 628 (700-13/4)	NA

SC-1, 09 SEP 2021 to 07 OCT 2021

SC-1, 09 SEP 2021 to 07 OCT 2021