

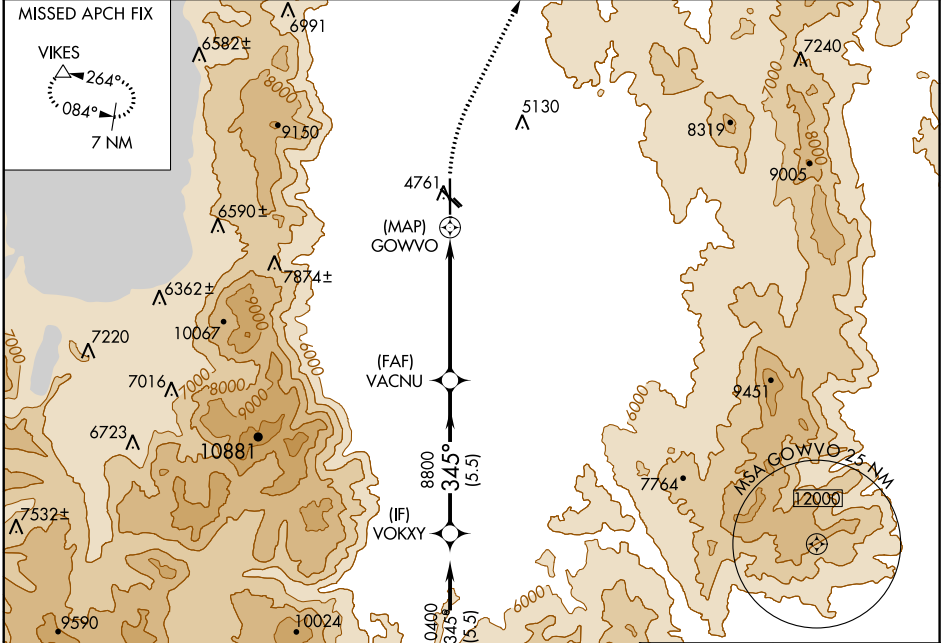
APP CRS <b>345°</b>	Rwy Idg TDZE Apt Elev <b>N/A</b> <b>N/A</b> <b>4724</b>
------------------------	--

# RNAV (GPS)-B

## MINDEN-TAHOE (MEV)

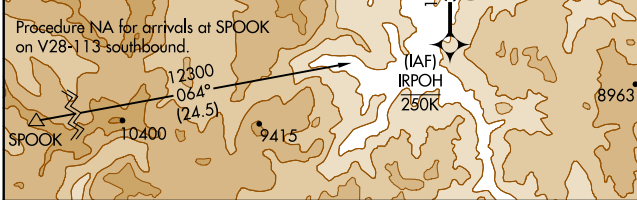
RNP APCH.	<p><b>▽</b> Circling NA for Cat D southwest of Rwy 12 and 34.</p> <p><b>▲</b> Circling Rwy 12L, 30R NA at night.</p>	MISSED APPROACH: Climbing right turn to 11000 direct VIKES and hold, continue climb-in-hold to 11000.
-----------	--	---

AWOS-3PT <b>119.325</b>	NORCAL APP CON <b>119.2 279.55</b>	CLNC DEL <b>133.25</b>	UNICOM <b>123.05 (CTAF) 0</b>
----------------------------	---------------------------------------	---------------------------	----------------------------------

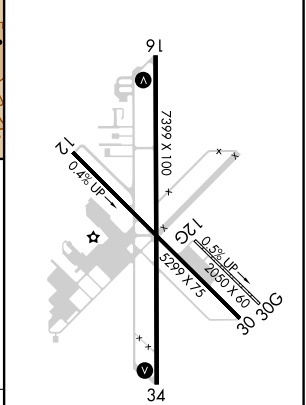
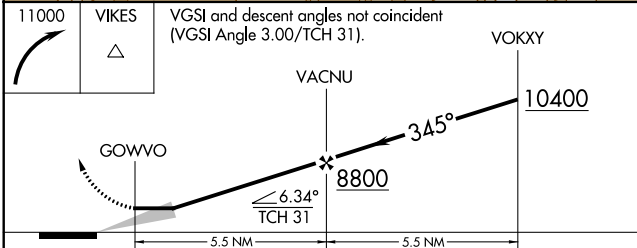


SW-4, 09 SEP 2021 to 07 OCT 2021

SW-4, 09 SEP 2021 to 07 OCT 2021



ELEV 4724
-----------



CATEGORY	A	B	C	D
<b>0</b> CIRCLING	6480-1¼ 1756 (1800-1¼)	6480-1½ 1756 (1800-1½)	6480-3	1756 (1800-3)

HIRL Rwy 16-34 **0**