

LOC/DME I-TTA 110.75 Chan 44 (Y)	APP CRS 029°	Rwy Idg 6501 TDZE 246 Apt Elev 246
---	------------------------	---

RALEIGH
EXECUTIVE JETPORT AT SANFORD-LEE COUNTY (TTA)

ILS Z or LOC Z RWY 3

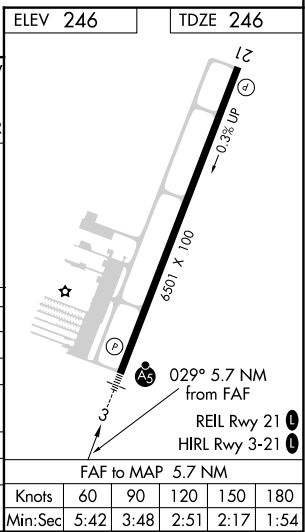
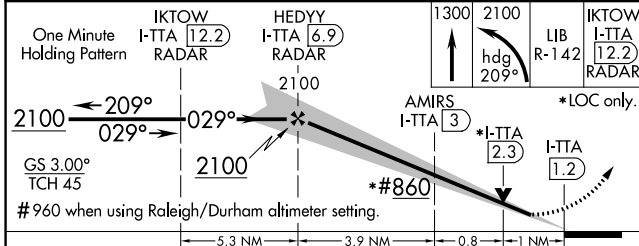
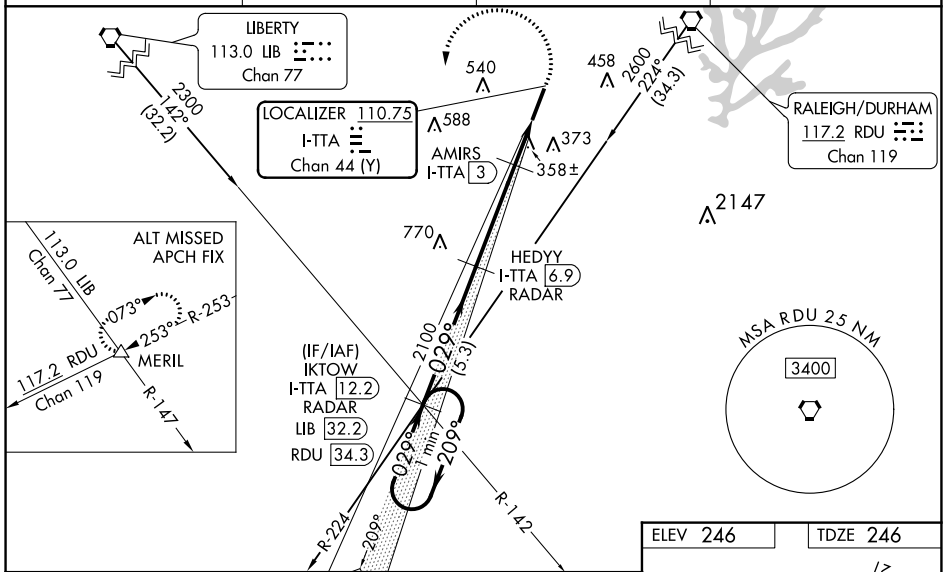
DME required for LOC only.

NA When local altimeter setting not received, use Raleigh/Durham altimeter setting: increase DA to 527 feet; increase all MDAs 100 feet and S-LOC 3 Cats C and D visibility to 1 1/2 SM, increase Circling Cat C visibility to 2 SM and Cat D to 2 1/4 SM; AMIRS FIX MINIMUMS: increase S-LOC 3 Cats C and D visibility to 1 SM, and Circling Cat C visibility to 2 SM and Cat D visibility to 2 1/4 SM. For inop ALS, increase S-LOC 3 Cats C and D visibility to 1 1/4 SM. AMIRS FIX MINIMUMS: increase S-LOC 3 Cats C and D visibility to 1 SM. For inop ALS when using Raleigh/Durham altimeter setting, increase S-ILS 3 all Cats visibility to 7/8 SM and S-LOC 3 Cats C and D visibility to 2 SM. AMIRS FIX MINIMUMS: increase S-LOC 3 Cats C and D visibility to 1 1/2 SM. VDP NA when using Raleigh/Durham altimeter setting.

MALS R
A5

MISSED APPROACH:
Climb to 1300 then climbing left turn to 2100 on heading 209° and LIB VORTAC R-142 to IKTOW INT/I-TTA 12.2 DME/RADAR and hold.

AWOS-3 120.625	RALEIGH APP CON 125.3 353.675	UNICOM 123.075 (CTAF) 0	GCO 135.075
--------------------------	---	-----------------------------------	-----------------------



CATEGORY	A	B	C	D
S-ILS 3	446-1/2		200 (200-1/2)	
S-LOC 3	860-1/2	614 (700-1/2)	860-1 3/8	614 (700-1 3/8)
C CIRCLING	860-1	614 (700-1)	860-1 3/4	960-2 1/4 614 (700-1 3/4) 714 (800-2 1/4)
AMIRS FIX MINIMUMS				
S-LOC 3	620-1/2	374 (400-1/2)	620-5/8	374 (400-5/8)
C CIRCLING	760-1 514 (600-1)	820-1 574 (600-1)	840-1 1/2 594 (600-1 1/2)	960-2 1/4 714 (800-2 1/4)

ILS Z or LOC Z RWY 3

SE-2, 09 SEP 2021 to 07 OCT 2021

SE-2, 09 SEP 2021 to 07 OCT 2021

Knots	60	90	120	150	180
Min:Sec	5:42	3:48	2:51	2:17	1:54