

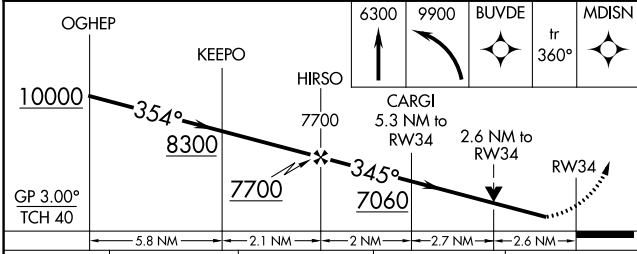
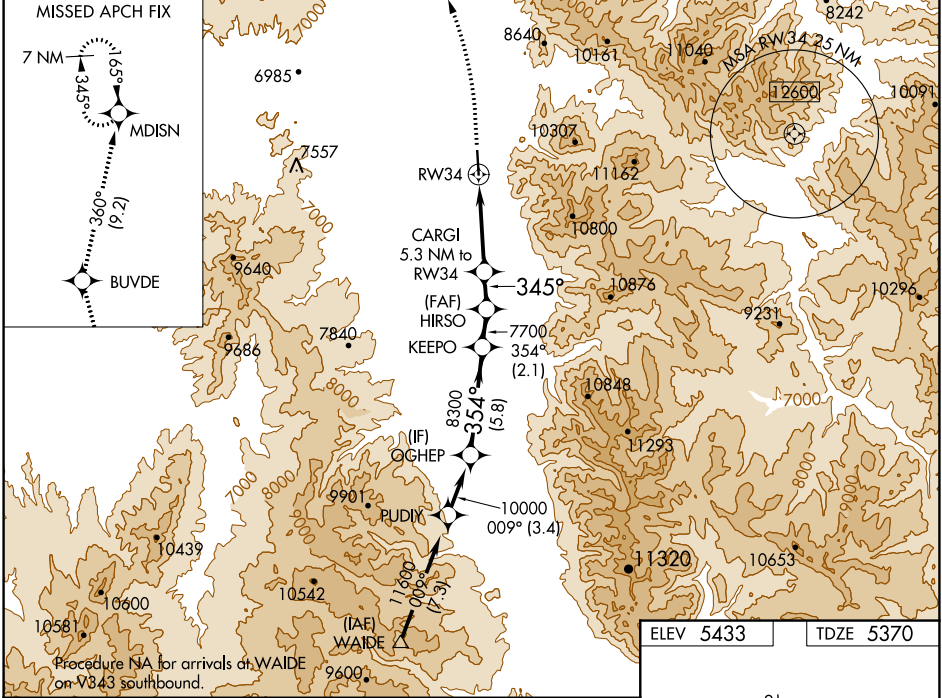
WAAS CH 45539 W34A	APP CRS 345°	Rwy Idg TDZE Apt Elev	7600 5370 5433
--	------------------------	-----------------------------	---

RNAV (GPS) RWY 34

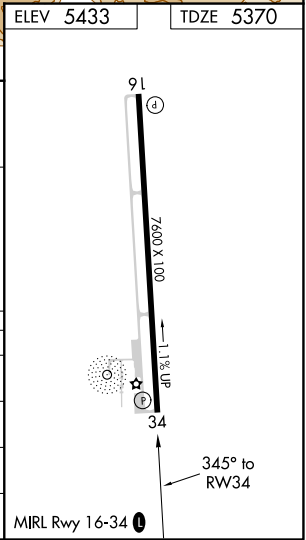
ENNIS BIG SKY (EKS)

RNP APCH-GPS.	MISSED APPROACH: Climb to 6300, then climbing left turn to 9900 direct BUUDE and on track 360° to MDISN and hold.
<p>▼ Circling NA east of Rwy 16-34. Rwy 34 helicopter visibility reduction below 3/4 SM NA. Baro-VNAV NA.</p> <p>▲</p>	

AWOS-3P 119.85	BIG SKY APP CON ★ 118.975 226.675	UNICOM 122.8 (CTAF) 0
--------------------------	---	---------------------------------



CATEGORY	A	B	C	D
LPV DA	5645-1 275 (300-1)			
LNAV/VNAV DA	5952-1 3/4 582 (600-1 3/4)			
LNAV MDA	6220-1 850 (800-1)	6220-1 1/4 850 (800-1 1/4)	6220-2 1/2	850 (800-2 1/2)
CIRCLING	6220-1 787 (800-1)	6220-1 1/4 787 (800-1 1/4)	6220-2 1/2	787 (800-2 1/2)



NW-1, 09 SEP 2021 to 07 OCT 2021

NW-1, 09 SEP 2021 to 07 OCT 2021