

WAAS CH <b>63221</b> <b>W17A</b>	APP CRS <b>168°</b>	Rwy Idg TDZE Apt Elev <b>6300</b> <b>5005</b> <b>5022</b>
--	------------------------	--

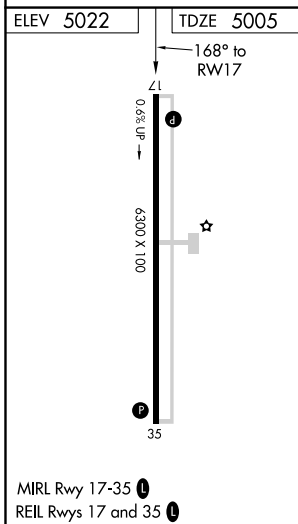
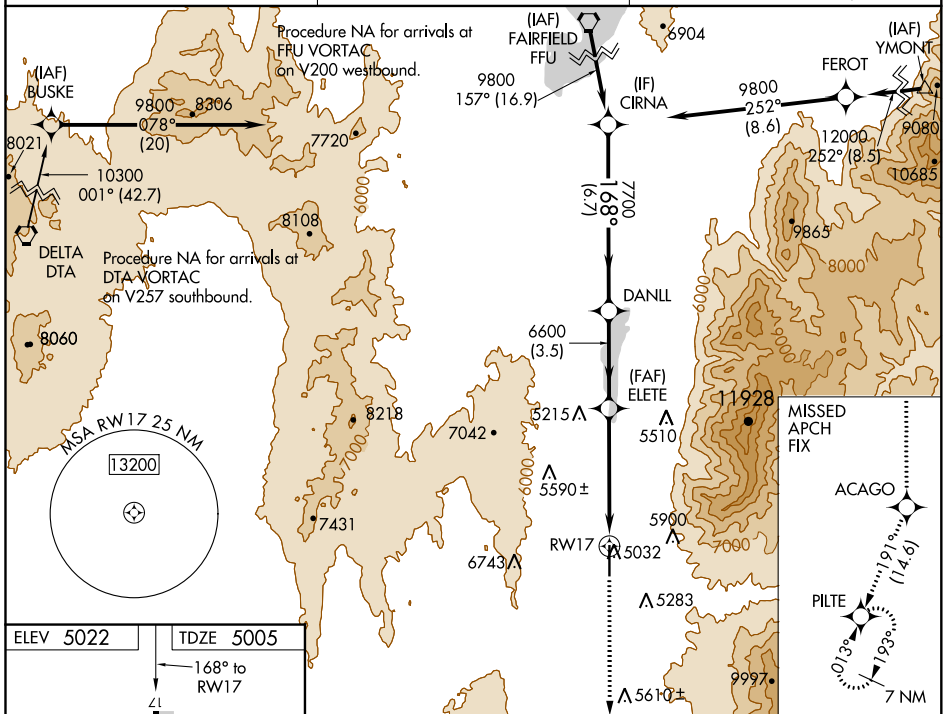
# RNAV (GPS) RWY 17

NEPHI MUNI (U14)

**NA** Baro-VNAV NA when using Provo Muni altimeter setting. For uncompensated Baro-VNAV systems, LNAV/VNAV NA below -24°C (-11°F) or above 12°C (53°F). When local altimeter setting not received, use Provo Muni altimeter setting and increase all DA 142 feet; increase all MDA 160 feet and visibility all Cats ½ mile. Circling NA for Cat D east of Rwy 17-35. DME/DME RNP-0.3 NA. VDP NA with Provo Muni altimeter setting.

**MISSED APPROACH:** Climb to 11400 direct ACAGO and on track 191° to PILTE and hold.

<b>AWOS-3</b> <b>118.275</b>	<b>SALT LAKE CENTER</b> <b>127.825 239.025</b>	<b>UNICOM</b> <b>123.075 (CTAF)</b>
---------------------------------	---	--



11400	ACAGO	↑	191°	PILTE	CIRNA
*LNAV only.		*2.4 NM to RWY 17			
RWY 17		ELETE	DANLL	CIRNA	
2.4 NM		2.5 NM	3.5 NM	6.7 NM	
6600		6600	7700	9800	
GP 3.00°		TCH 40			
CATEGORY	A	B	C	D	
LPV DA	5433-1½		428 (400-1½)		
LNAV/VNAV DA	5692-2½		687 (700-2½)		
LNAV MDA	5800-1 795 (800-1)	5800-1¼ 795 (800-1¼)	5800-2½	795 (800-2½)	
CIRCLING	5800-1 778 (800-1)	5800-1¼ 778 (800-1¼)	5800-2½	778 (800-2½)	

SW-4, 09 SEP 2021 to 07 OCT 2021

SW-4, 09 SEP 2021 to 07 OCT 2021