

WAAS CH <b>58221</b> <b>W35A</b>	APP CRS <b>348°</b>	Rwy Idg TDZE Apt Elev	<b>6300</b> <b>5022</b> <b>5022</b>
--	------------------------	-----------------------------	---

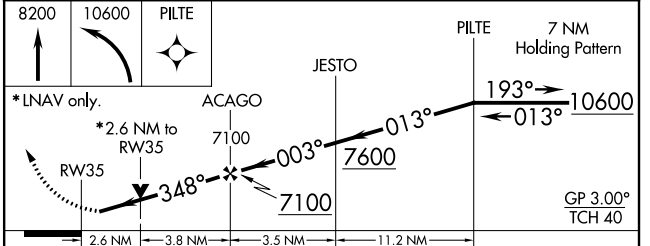
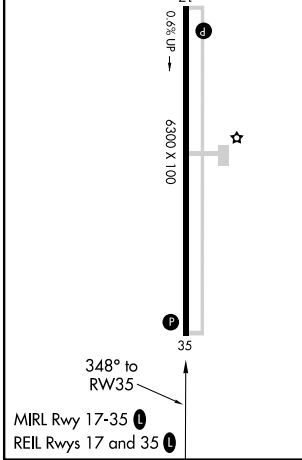
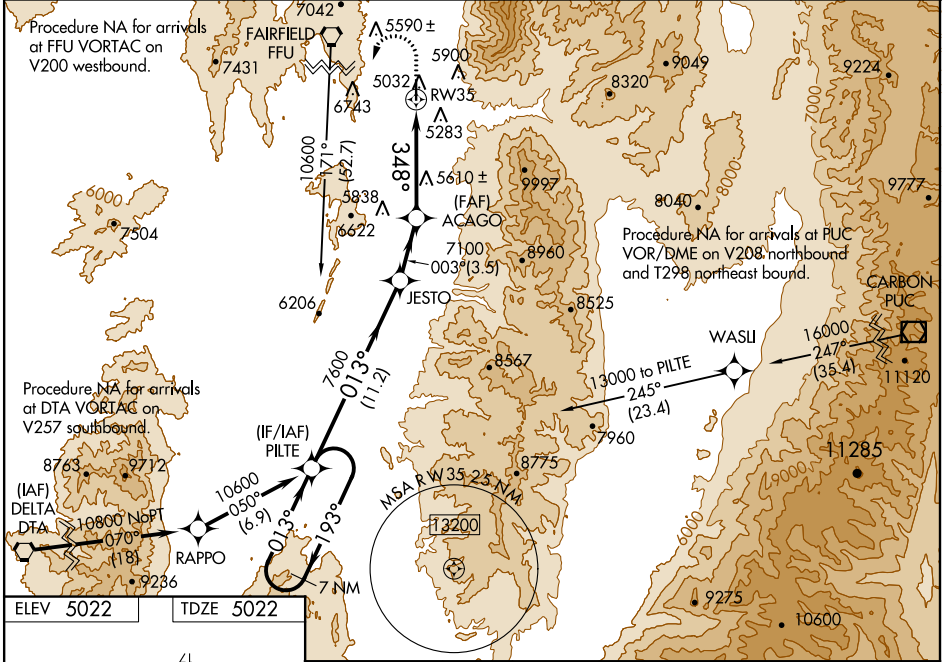
# RNAV (GPS) RWY 35

NEPHI MUNI (U14)

**⚠** Baro-VNAV NA when using Provo altimeter setting. For uncompensated Baro-VNAV systems, LNAV/VNAV NA below -24°C (-11°F) or above 12°C (53°F). Circling NA for Cat D east of Rwy 17-35. Rwy 35 helicopter visibility reduction below ¾ SM NA. DME/DME RNP-0.3 NA. VDP NA with Provo altimeter setting. When local altimeter setting not received, use Provo altimeter setting and increase all DA 142 feet; increase all MDA 160 feet and visibility all Cats ½ SM.

**⚠** NA MISSED APPROACH: Climb to 8200 then climbing left turn to 10600 direct PILTE and hold.

AWOS-3 <b>118.275</b>	SALT LAKE CENTER <b>127.825 239.025</b>	UNICOM <b>123.075</b> (CTAF) <b>📻</b>
--------------------------	--	--



CATEGORY	A	B	C	D
LPV DA		5272-7/8	250 (300-7/8)	
LNAV/VNAV DA		5596-2	574 (600-2)	
LNAV MDA	5900-1 878 (900-1)	5900-1¼ 878 (900-1¼)	5900-2½	878 (900-2½)
CIRCLING	5900-1¼	878 (900-1¼)	5900-2½ 878 (900-2½)	5900-2¾ 878 (900-2¾)

SW-4, 09 SEP 2021 to 07 OCT 2021

SW-4, 09 SEP 2021 to 07 OCT 2021