

# RNAV (GPS)-D

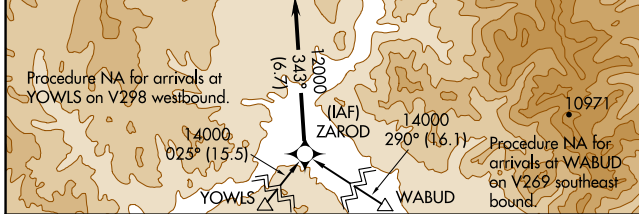
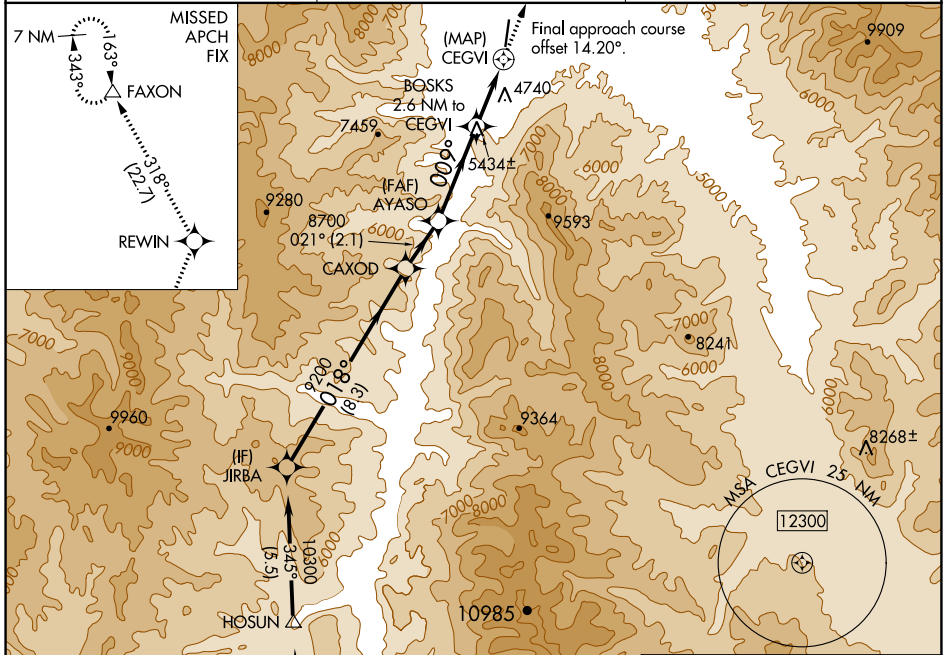
LEMHI COUNTY (SMN)

APP CRS <b>009°</b>	Rwy Idg TDZE Apt Elev	<b>N/A</b> <b>N/A</b> <b>4044</b>
------------------------	-----------------------------	---

**NA** Circling Rwy 35 NA at night.  
DME/DME RNP-0.3 NA.  
Circling NA for Cat C east of Rwy 17-35.

**MISSED APPROACH:** Climb to 12000 direct REWIN and on track 318° to FAXON and hold, continue climb-in-hold to 12000.

AWOS-3PT <b>135.075</b>	SALT LAKE CENTER <b>132.4 338.3</b>	UNICOM <b>122.8 (CTAF) 0</b>
----------------------------	--	---------------------------------



JIRBA	CAXOD	AYASO	BOSKS	REWIN	FAXON
10300	8700	8200	7459	5434±	4740
8.3 NM	2.1 NM	3.6 NM	2.6 NM	0.5 NM	
018°	021°	009°	318°		
			tr		

ELEV 4044

REIL Rws 17 and 35  
MIRL Rwy 17-35

CATEGORY	A	B	C	D
<b>CIRCLING</b>	6000-1¼ 1956 (2000-1¼)	6000-1½ 1956 (2000-1½)	6220-3 2176 (2200-3)	NA

NW-1, 09 SEP 2021 to 07 OCT 2021

NW-1, 09 SEP 2021 to 07 OCT 2021