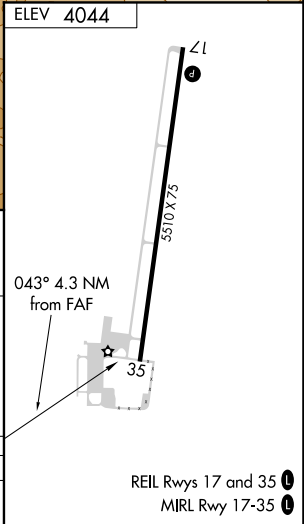
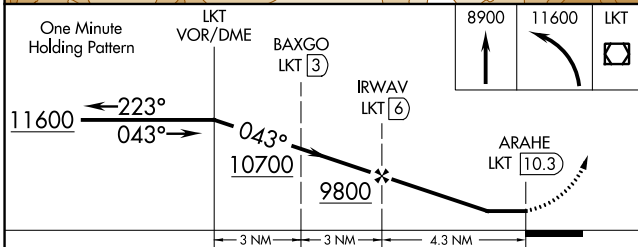
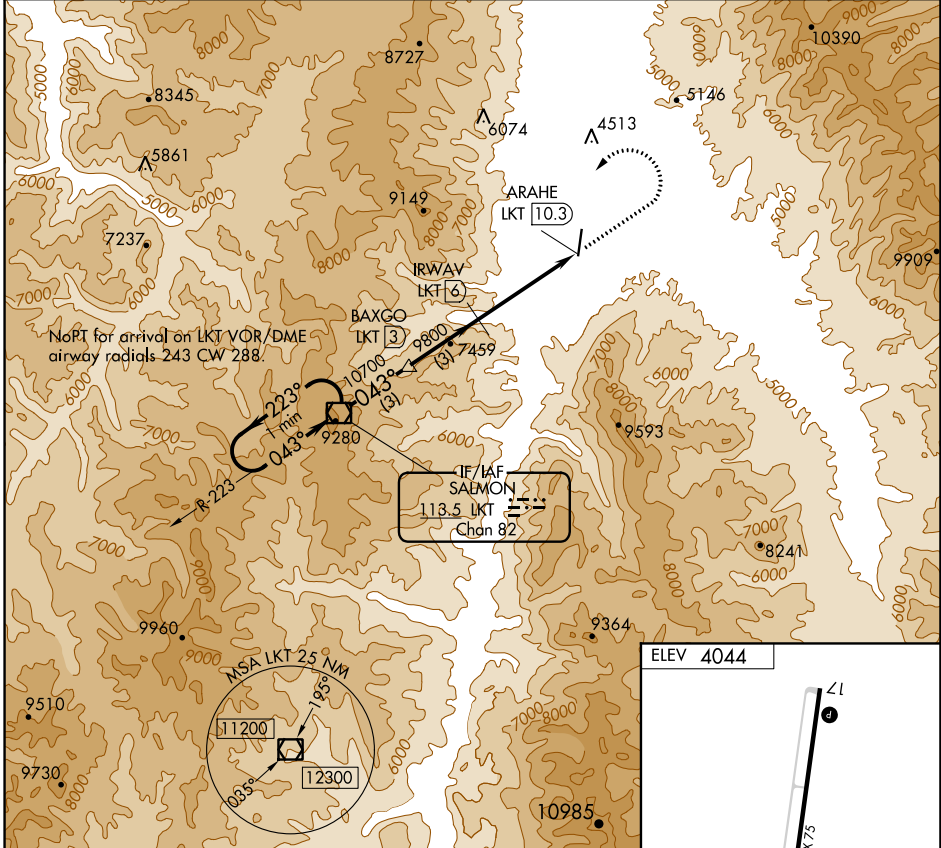


VOR/DME LKT 113.5 Chan 82	APP CRS 043°	Rwy Idg TDZE Apt Elev 4044	N/A N/A 4044
---	------------------------	--------------------------------------	--------------------

VOR/DME-B
LEMHI COUNTY (SMN)

<p>⚠ NA ❄ -13°C</p>	<p>Circling NA for Cat C East of Rwy 17-35. Night Landing: Rwy 35 NA.</p>	<p>MISSED APPROACH: Climb to 8900 then climbing left turn to 11600 direct LKT VOR/DME and hold, continue climb-in-hold to 11600.</p>
-------------------------	---	--

<p>AWOS-3PT 135.075</p>	<p>SALT LAKE CENTER 132.4 338.3</p>	<p>UNICOM 122.8 (CTAF) 0</p>
------------------------------------	--	---



CATEGORY	A	B	C	D
<p>Ⓢ CIRCLING</p>	<p>8100-1¼ 4056 (4100-1¼)</p>	<p>8100-1½ 4056 (4100-1½)</p>	<p>8100-3 4056 (4100-3)</p>	<p>NA</p>

NW-1, 09 SEP 2021 to 07 OCT 2021

NW-1, 09 SEP 2021 to 07 OCT 2021