

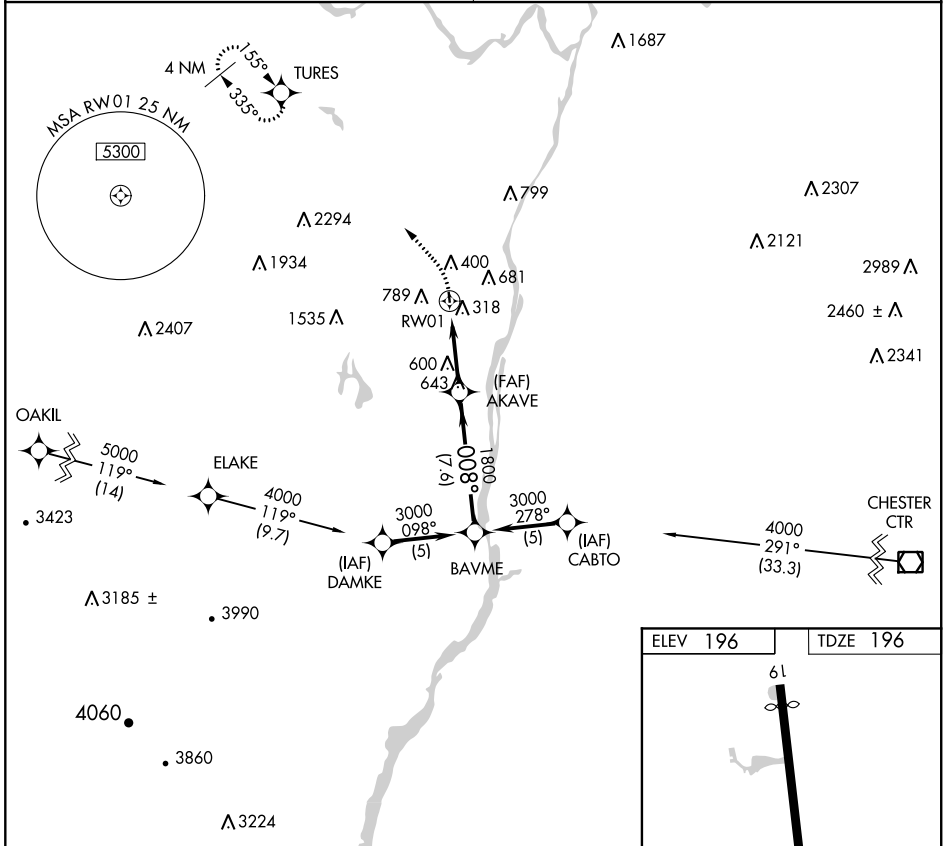
APP CRS	Rwy ldg	<b>2703</b>
<b>008°</b>	TDZE	<b>196</b>
	Apt Elev	<b>196</b>

# RNAV (GPS) RWY 1

SOUTH ALBANY (4BØ)

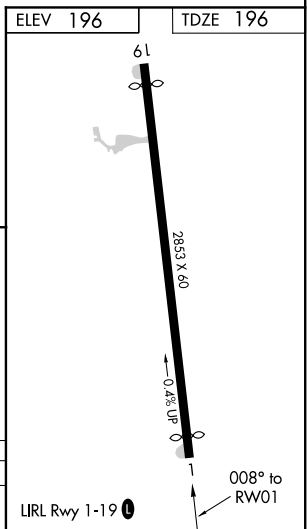
RNP APCH.	MISSED APPROACH: Climbing left turn to 3500 direct TURES WP and hold.
▼ Use Albany Intl altimeter setting. Procedure NA at night.	
▲ NA Rwy 1 helicopter visibility reduction below 1 SM NA.	

ALBANY APP CON <b>118.05 263.075</b>	CTAF <b>122.9 0</b>
---	------------------------

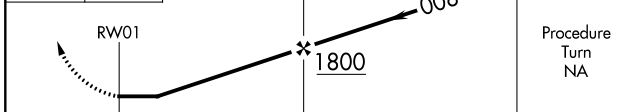


NE-2, 09 SEP 2021 to 07 OCT 2021

NE-2, 09 SEP 2021 to 07 OCT 2021



3500	TURES	Visual Segment - Obstacles.	BAYME
------	-------	-----------------------------	-------



CATEGORY	A	B	C	D
LNAV MDA	960-1 764 (800-1)	960-1¼ 764 (800-1¼)	NA	