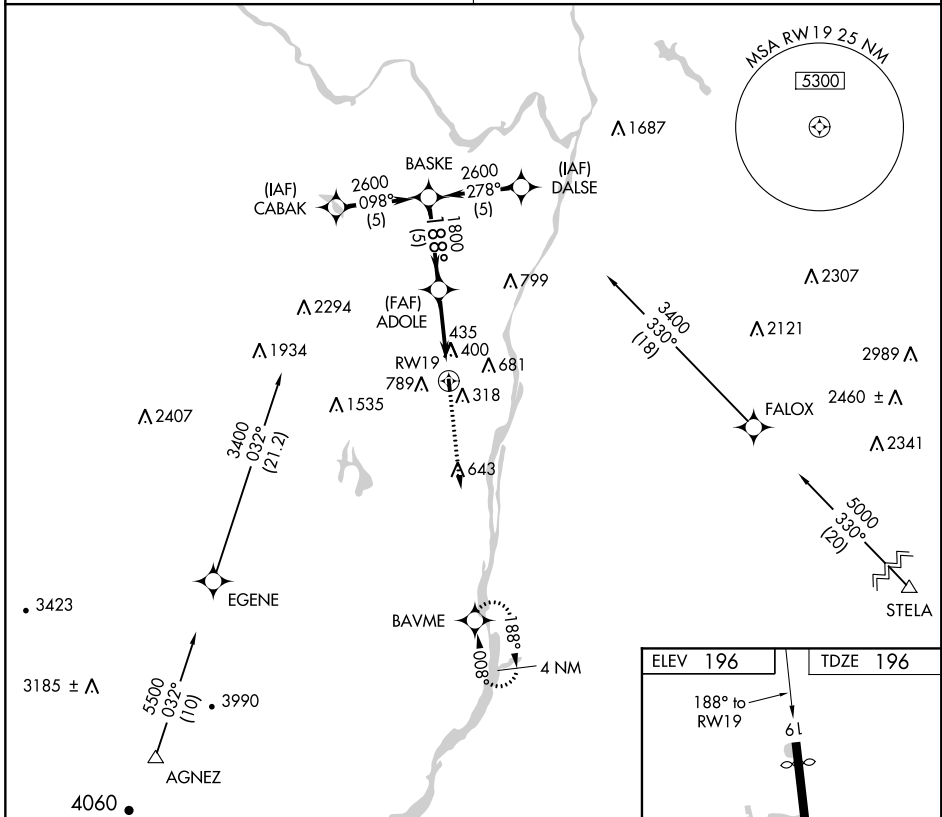


APP CRS 188°	Rwy ldg 2729
	TDZE 196
	Apt Elev 196

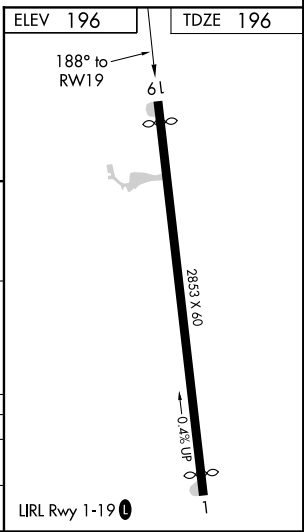
RNAV (GPS) RWY 19

SOUTH ALBANY (4B0)

RNP APCH.	MISSED APPROACH: Climb to 3000 direct BAVME WP and hold.
<p>▼ Use Albany Intl altimeter setting. Procedure NA at night.</p> <p>▲ NA Rwy 19 helicopter visibility reduction below 1 SM NA.</p>	
ALBANY APP CON 118.05 263.075	CTAF 122.9 0



Procedure Turn NA	Visual Segment - Obstacles.			3000	BAVME
	BASKE	ADOLE	RWY 19		
	2600	1800			
	5 NM		4.9 NM		
CATEGORY	A	B	C	D	
LNAV MDA	740-1	544 (600-1)	NA		
CIRCLING	840-1 644 (700-1)	1040-1¼ 844 (900-1¼)	NA		



NE-2, 09 SEP 2021 to 07 OCT 2021

NE-2, 09 SEP 2021 to 07 OCT 2021