

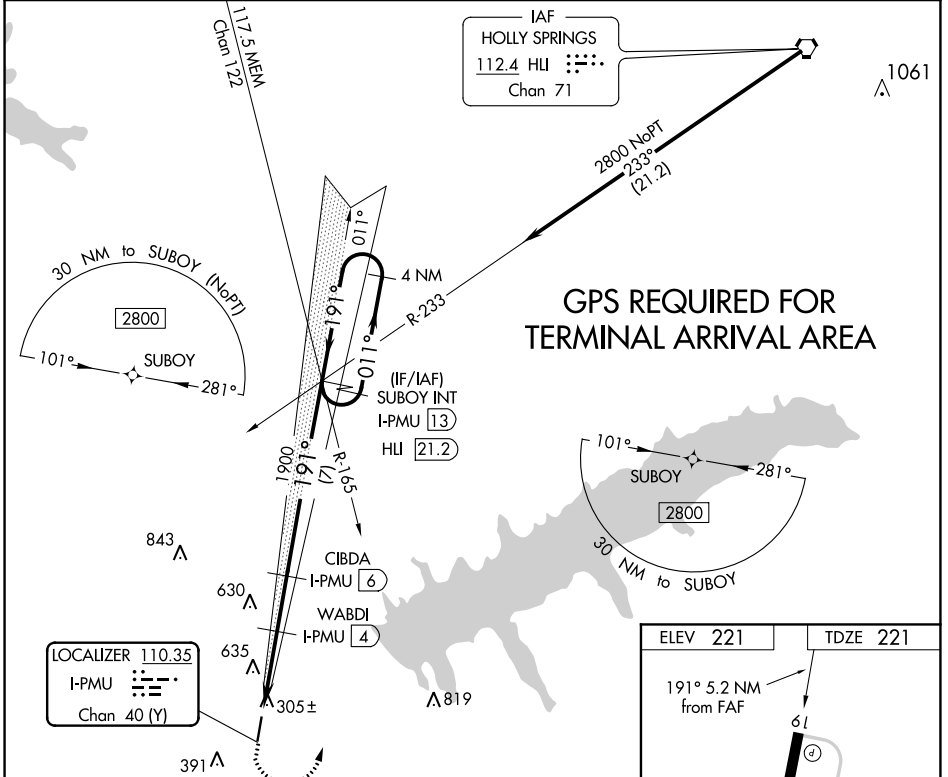
LOC/DME I-PMU 110.35 Chan 40 (Y)	APP CRS 191°	Rwy Idg TDZE Apt Elev	5001 221 221
---	------------------------	-----------------------------	---

LOC RWY 19
PANOLA COUNTY (PMU)

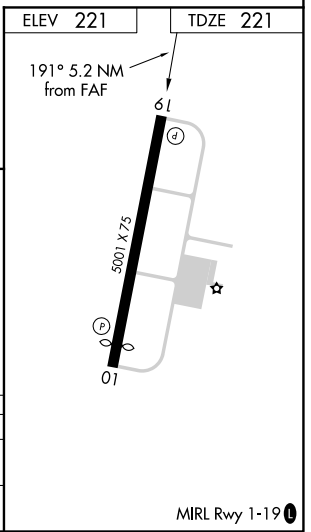
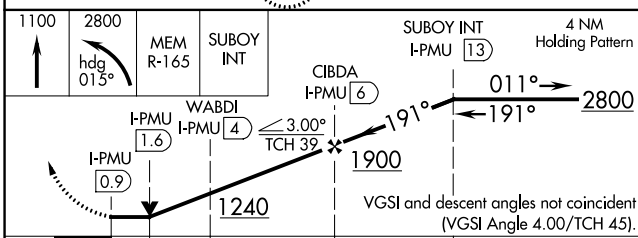
NA When local altimeter setting not received, use Oxford altimeter setting and increase all MDA 80 feet, increase S-19 Cats C, D visibility and Circling Cats B, C visibility ¼ mile. Rwy 19 helicopter visibility reduction below ¾ NA. VDP NA when using Oxford altimeter setting. DME required.

MISSILE APPROACH: Climb to 1100 then climbing left turn to 2800 on heading 015° and MEM VORTAC R-165 to SUBOY INT/13 DME and hold.

AWOS-3PT 118.225	MEMPHIS CENTER 128.5 381.4	UNICOM 122.8 (CTAF)
----------------------------	--------------------------------------	-------------------------------



**GPS REQUIRED FOR
TERMINAL ARRIVAL AREA**



CATEGORY	A	B	C	D
S-19		560-1	339 (400-1)	
CIRCLING	740-1 519 (600-1)	1000-1 779 (800-1)	1000-2¼ 779 (800-2¼)	1120-3 899 (900-3)

MIRL Rwy 1-19

SC-4, 09 SEP 2021 to 07 OCT 2021

SC-4, 09 SEP 2021 to 07 OCT 2021