

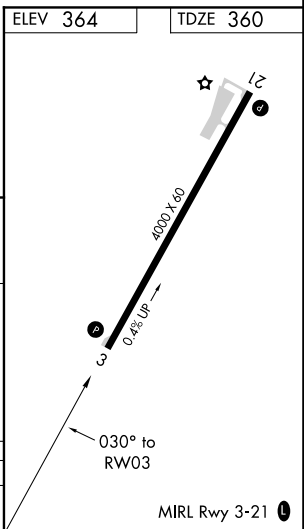
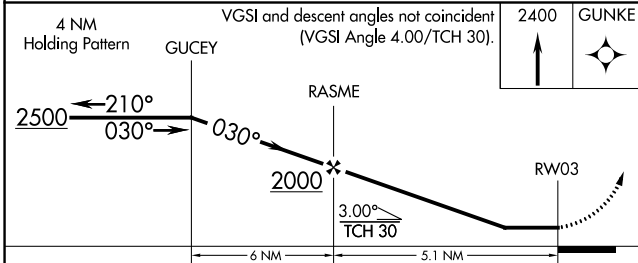
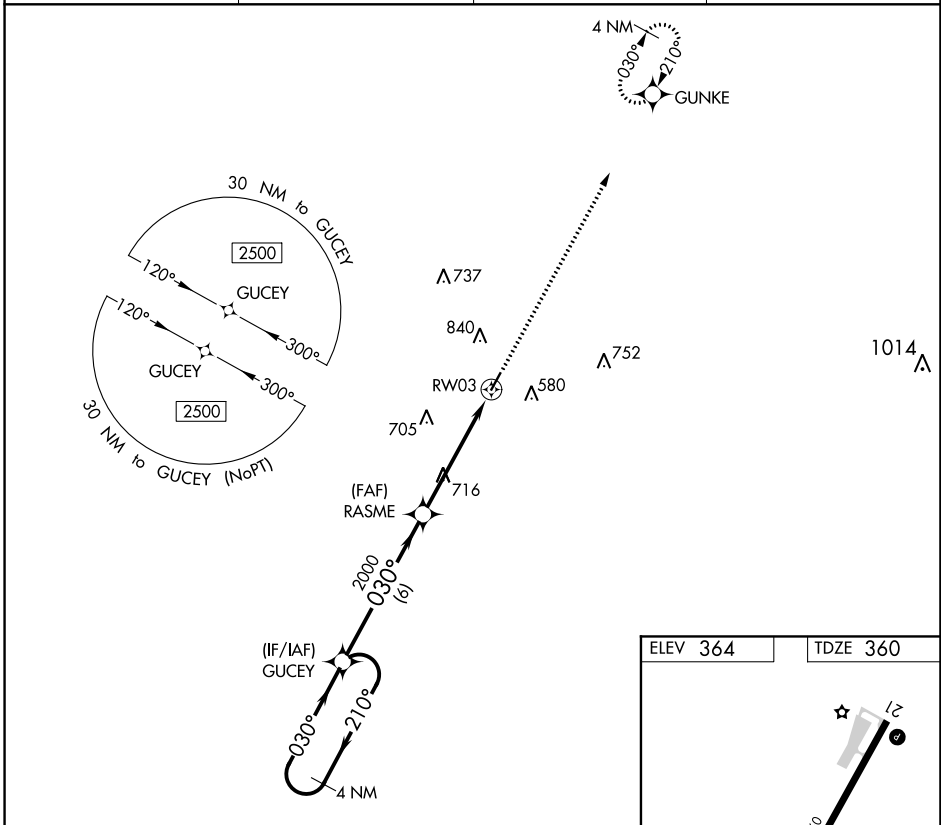
APP CRS	Rwy Idg	<b>4000</b>
<b>030°</b>	TDZE	<b>360</b>
	Apt Elev	<b>364</b>

# RNAV (GPS) RWY 3

WINONA-MONTGOMERY COUNTY (5A6)

RNP APCH.	<p>▼ Use Grenada altimeter setting, when not received, use Greenwood altimeter setting.</p> <p>▲ NA Procedure NA at night. Rwy 3 helicopter visibility reduction below 1 SM NA.</p>	MISSED APPROACH: Climb to 2400 direct GUNKE and hold.
-----------	---	---

AWOS-3PT <b>120.175</b>	GNF AWOS-3PT <b>118.025</b>	MEMPHIS CENTER <b>128.5 279.55</b>	CTAF <b>122.9</b>
----------------------------	--------------------------------	---------------------------------------	----------------------



CATEGORY	A	B	C	D
LNAV MDA	1040-1	680 (700-1)	1040-2 680 (700-2)	NA

SC-4, 09 SEP 2021 to 07 OCT 2021

SC-4, 09 SEP 2021 to 07 OCT 2021