

LOUISVILLE, GEORGIA

AL-9837 (FAA)

20310

WAAS CH 56539 W13A	APP CRS 127°	Rwy Idg TDZE Apt Elev	5002 328 328
--	------------------------	-----------------------------	---

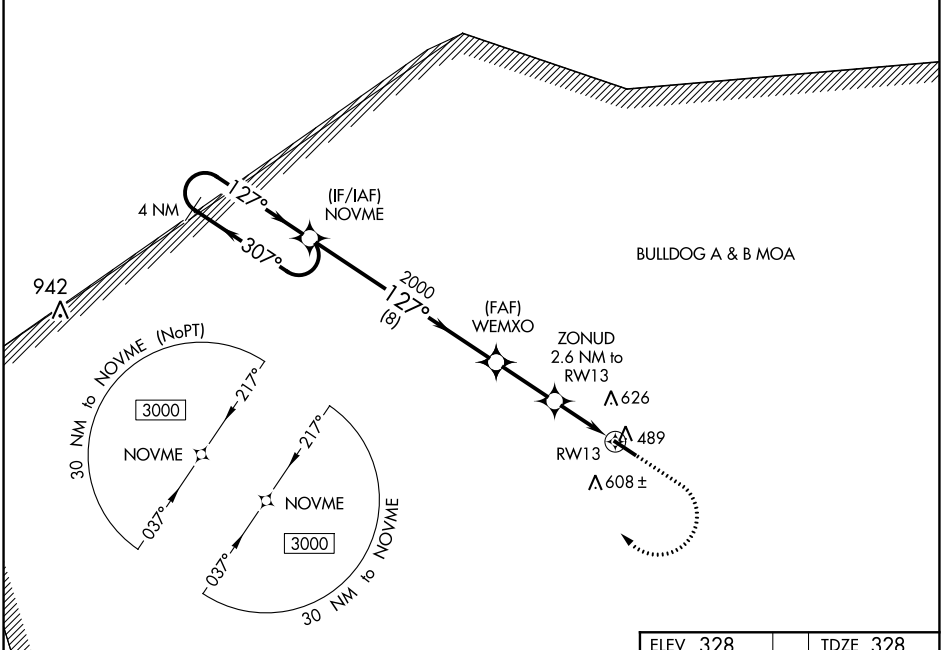
RNAV (GPS) RWY 13

LOUISVILLE MUNI (2J3)

▼ For uncompensated Baro-VNAV systems, LNAV/VNAV NA below -15°C (-4°F) or above 54°C (130°F). Rwy 13 helicopter visibility reduction below 3/4 SM NA. DME/DME RNP-0.3 NA.

MISSED APPROACH: Climb to 1000 then climbing right turn to 3000 direct NOVME and hold.

AWOS-3PT 119.35	AUGUSTA APP CON 126.8 270.3	CTAF 122.9 0
---------------------------	---------------------------------------	------------------------



SE-4, 09 SEP 2021 to 07 OCT 2021

SE-4, 09 SEP 2021 to 07 OCT 2021

		ELEV 328		TDZE 328	
VGSI and RNAV glidepath not coincident (VGSI Angle 3.83/TCH 23).					
4 NM Holding Pattern 3000 ← 307° GP 3.00° TCH 45		NOVME 2000 *1200		WEMXO ZONUD 2.6 NM to RW13 *1.1 NM to RW13 RW13	
8 NM		2.5 NM		1.5 NM 1.1 NM	
CATEGORY	A	B	C	D	
LPV DA	578-1		250 (300-1)		
LNAV/VNAV DA	762-1½		434 (500-1½)		
LNAV MDA	800-1	472 (500-1)	800-1½ 472 (500-1½)	800-1¾ 472 (500-1¾)	
C CIRCLING	840-1 512 (600-1)	980-1 652 (700-1)	980-1¾ 652 (700-1¾)	980-2 652 (700-2)	
					MIRL Rwy 13-31 0

LOUISVILLE, GEORGIA
Orig-A 09NOV17

32°59'N-82°23'W

RNAV (GPS) RWY 13

LOUISVILLE MUNI (2J3)