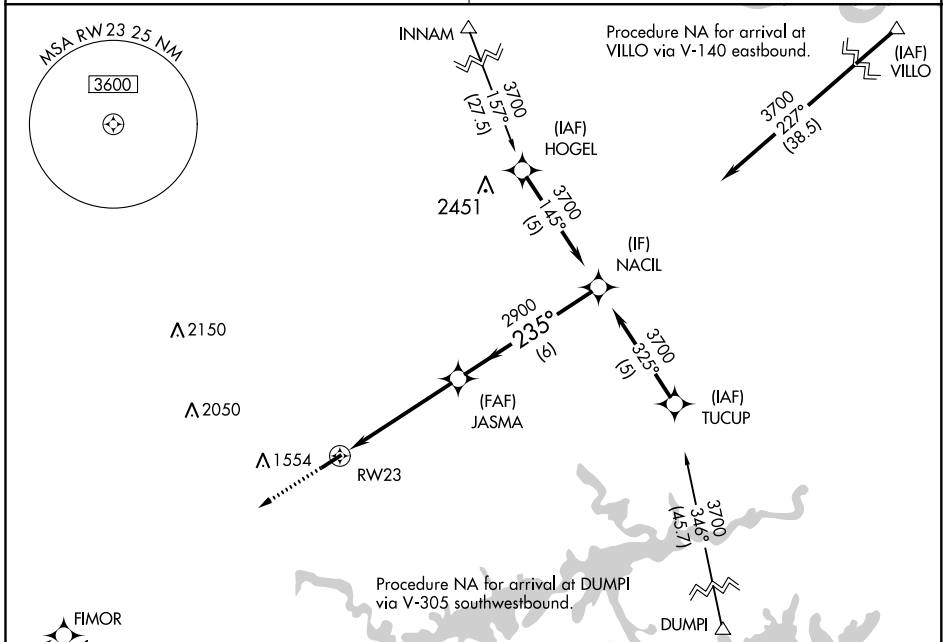


APP CRS	Rwy Idg	4795
235°	TDZE	1268
	Apt Elev	1268

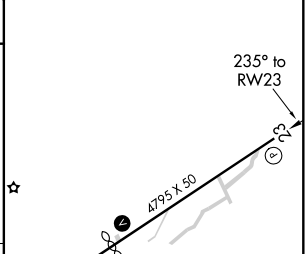
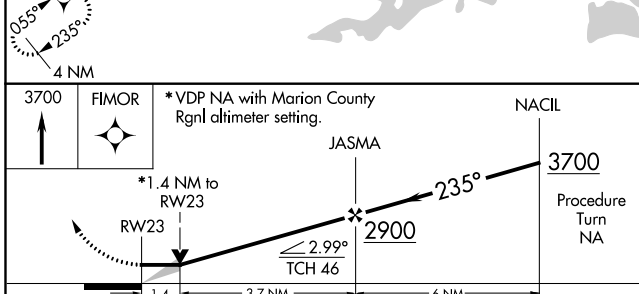
# RNAV (GPS) RWY 23

HOLLEY MOUNTAIN AIRPARK (2A2)

RNP APCH.		MISSED APPROACH: Climb to 3700 direct FIMOR and hold.
<p>▼ Obtain local altimeter setting on CTAF; when not received, use Marion County</p> <p>▲ NA Rgnl altimeter setting. Circling Rwy 5 NA at night.</p>		
MEMPHIS CENTER	UNICOM	
126.85 281.55	122.7 (CTAF) 0	



ELEV 1268	TDZE 1268
-----------	-----------



CATEGORY	A	B	C	D
RNAV MDA	1740-1	472 (500-1)	1740-1¼ 472 (500-1¼)	NA
CIRCLING	1760-1	492 (500-1)	1800-1½ 532 (600-1½)	NA
MARION COUNTY RGNL ALTIMETER SETTING MINIMUMS				
RNAV MDA	1900-1	632 (700-1)	1900-1¾ 632 (700-1¾)	NA
CIRCLING	1940-1	672 (700-1)	1960-2 712 (800-2)	NA

MIRL Rwy 5-23 0
REIL Rwy 5 and 23 0

SC-1, 09 SEP 2021 to 07 OCT 2021

SC-1, 09 SEP 2021 to 07 OCT 2021