

APP CRS	Rwy Idg	4397
055°	TDZE	1268
	Apt Elev	1268

RNAV (GPS) RWY 5

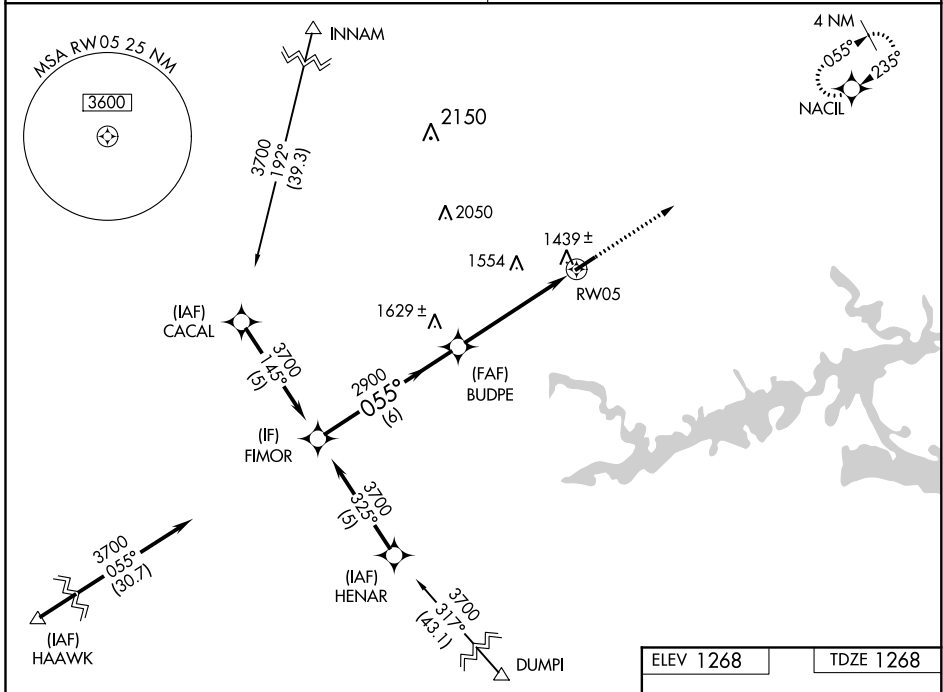
HOLLEY MOUNTAIN AIRPARK (2A2)

RNP APCH.

▼ Obtain local altimeter setting on CTAF; when not received, use Marion County Rgnl altimeter setting. Straight-in Rwy 5 NA at night, Circling Rwy 5 NA at night. Rwy 5 helicopter visibility reduction below 1 SM NA.

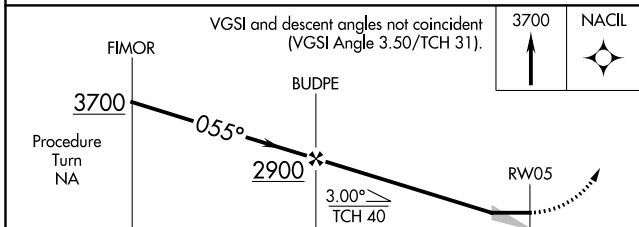
▲ NA MISSED APPROACH: Climb to 3700 direct NACIL and hold.

MEMPHIS CENTER 126.85 281.55	UNICOM 122.7 (CTAF) 0
--	---------------------------------



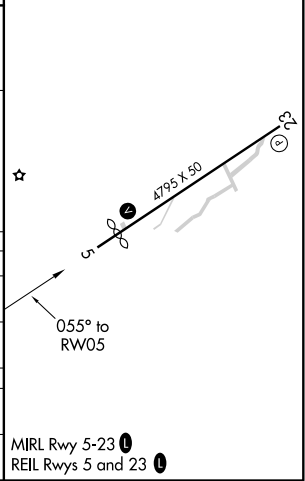
SC-1, 09 SEP 2021 to 07 OCT 2021

SC-1, 09 SEP 2021 to 07 OCT 2021



ELEV 1268	TDZE 1268
-----------	-----------

CATEGORY	A	B	C	D
LNVA MDA	1760-1	492 (500-1)	1760-1¼ 492 (500-1¼)	NA
CIRCLING	1760-1	492 (500-1)	1780-1½ 512 (600-1½)	NA
MARION COUNTY RGNL ALTIMETER SETTING MINIMUMS				
LNVA MDA	1920-1	652 (700-1)	1920-1¾ 652 (700-1¾)	NA
CIRCLING	1940-1	672 (700-1)	1960-2 692 (700-2)	NA



MIRL Rwy 5-23 0
REIL Rwy 5 and 23 0