

APP CRS 098°	Rwy Idg TDZE Apt Elev	N/A N/A 2254
------------------------	-----------------------------	---

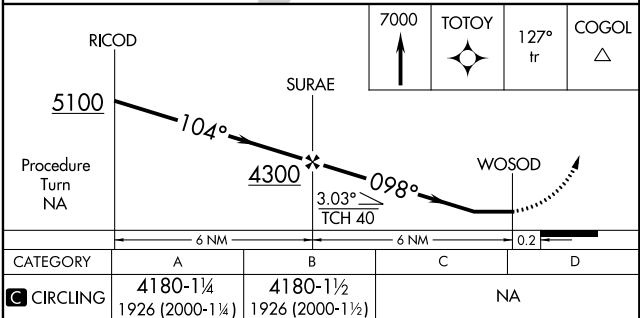
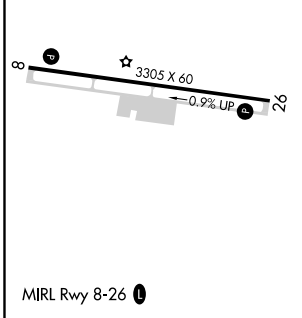
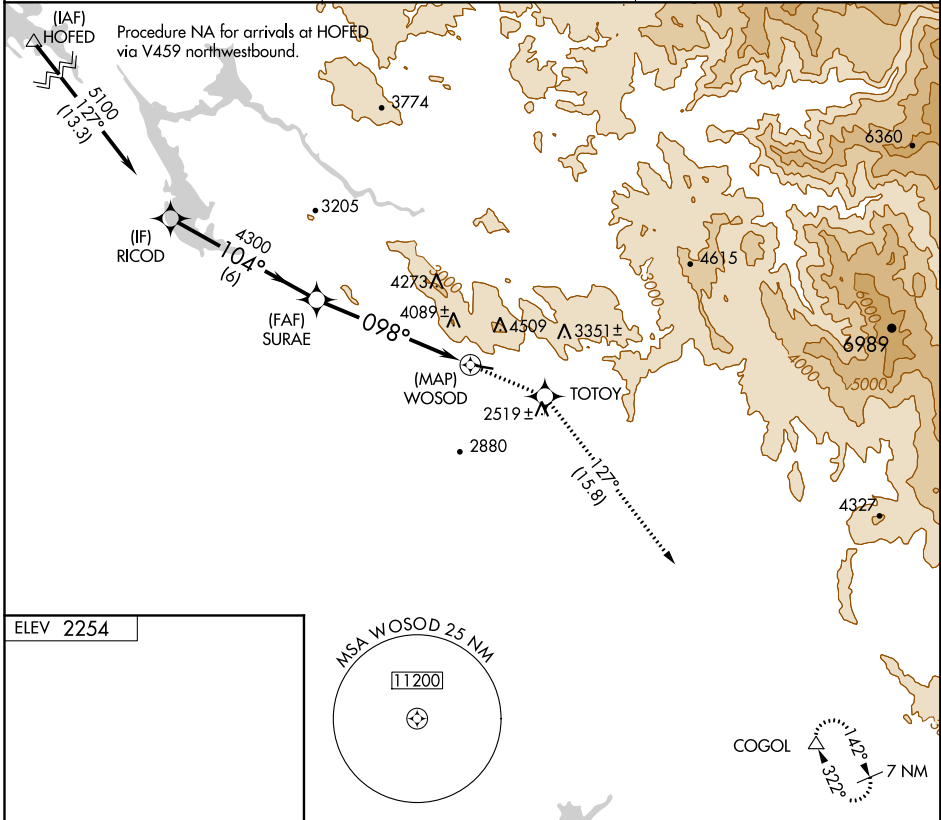
RNAV (GPS)-B

MARIPOSA-YOSEMITE (MPI)

NA DME/DME RNP-0.3 NA.
Circling NA north of Rwy 8-26. Procedure NA at night.
When local altimeter setting not received, procedure NA.

MISSED APPROACH: Climb to 7000 direct TOTOY and via 127° track to COGOL and hold.

AWOS-3 135.6	OAKLAND CENTER 121.25 327.0	UNICOM 122.7 (CTAF)
------------------------	---------------------------------------	-------------------------------



SW-2, 09 SEP 2021 to 07 OCT 2021

SW-2, 09 SEP 2021 to 07 OCT 2021