

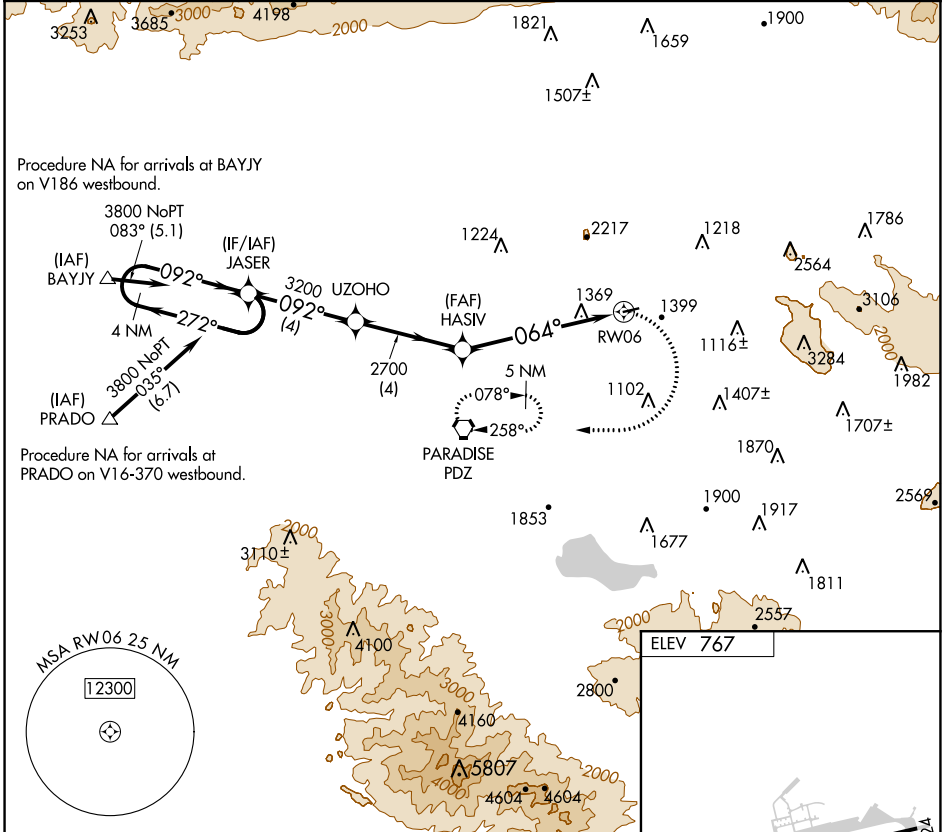
APP CRS	Rwy Idg	N/A
<b>064°</b>	TDZE	N/A
	Apt Elev	<b>767</b>

# RNAV (GPS)-A

FLABOB (R.I.R.)

RNP APCH.	MISSED APPROACH: Climbing right turn to 3200 direct PDZ VORTAC and hold.
<p>Procedure NA at night. Use Riverside Muni altimeter setting; when not received, use Ontario altimeter setting and increase all MDA 60 feet.</p>	

RAL ASOS <b>128.8</b>	SOCAL APP CON <b>135.4 377.125</b>	UNICOM <b>122.8 (CTAF) 0</b>
--------------------------	---------------------------------------	---------------------------------



SW-3, 09 SEP 2021 to 07 OCT 2021

