

APP CRS	Rwy Idg	5000
150°	TDZE	2934
	Apt Elev	2943

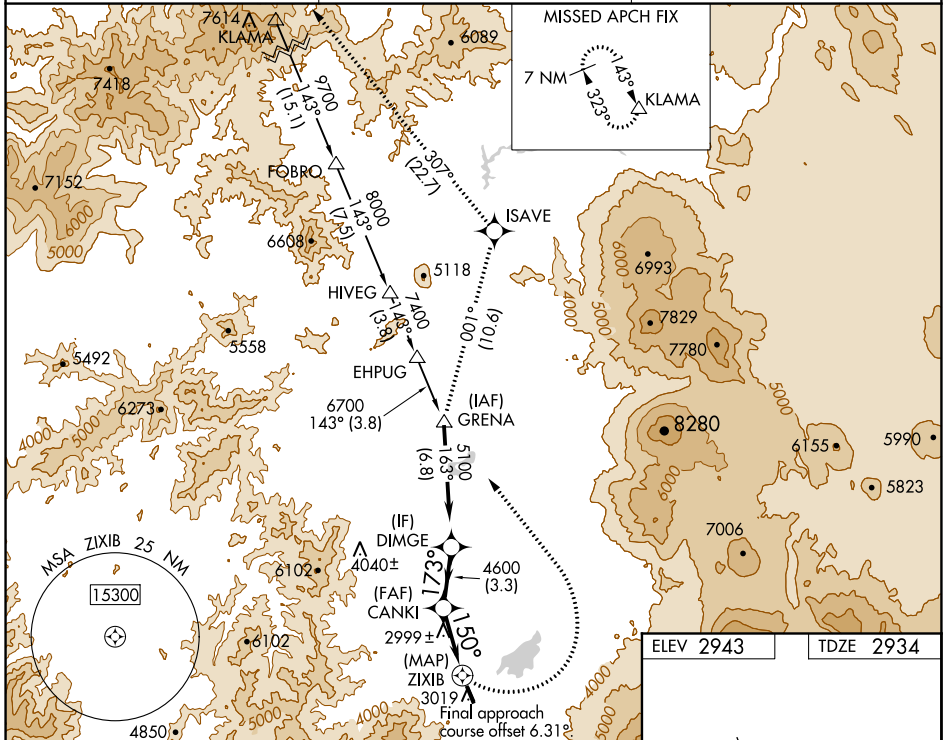
RNAV (GPS) RWY 14

WEED (O46)

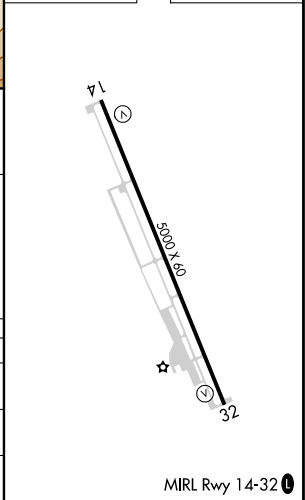
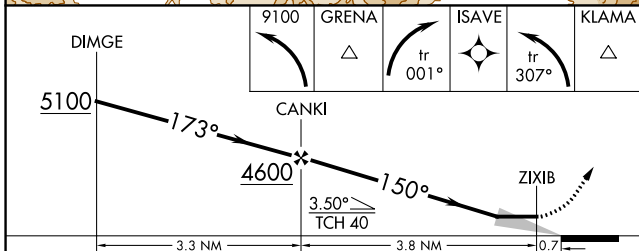
NA Circling NA southwest of Rwy 14-32. DME/DME RNP-0.3 NA. Use Siskiyou County altimeter setting.

MISSED APPROACH: (Do not exceed 185K until GRENA) Climbing left turn 9100 direct GRENA then right turn on track 001° to ISAVE then left turn on track 307° direct KLAMA and hold. *Missed approach requires a minimum climb of 325 feet per NM to 4000.

SIY ASOS 121.125	SEATTLE CENTER 124.85 306.3	UNICOM 122.7 (CTAF) 0
----------------------------	---------------------------------------	---------------------------------



ELEV 2943	TDZE 2934
-----------	-----------



CATEGORY	A	B	C	D
RNAV MDA*	3380-1	446 (500-1)	3580-1 $\frac{1}{8}$ 646 (700-1 $\frac{1}{8}$)	3700-2 $\frac{1}{2}$ 766 (800-2 $\frac{1}{2}$)
RNAV MDA	3420-1 486 (500-1)	3480-1 546 (600-1)	3780-2 $\frac{1}{2}$ 846 (900-2 $\frac{1}{2}$)	3820-2 $\frac{1}{2}$ 886 (900-2 $\frac{1}{2}$)
C CIRCLING	3680-1 737 (800-1)	3840-1 $\frac{1}{4}$ 897 (900-1 $\frac{1}{4}$)	4080-3 1137 (1200-3)	4340-3 1397 (1400-3)

MIRL Rwy 14-32

SW-2, 09 SEP 2021 to 07 OCT 2021

SW-2, 09 SEP 2021 to 07 OCT 2021