

APP CRS	Rwy Idg	2660
296°	TDZE	30
	Apt Elev	30

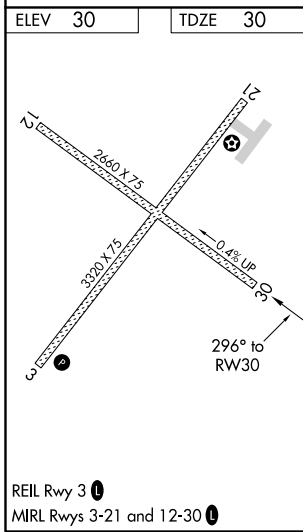
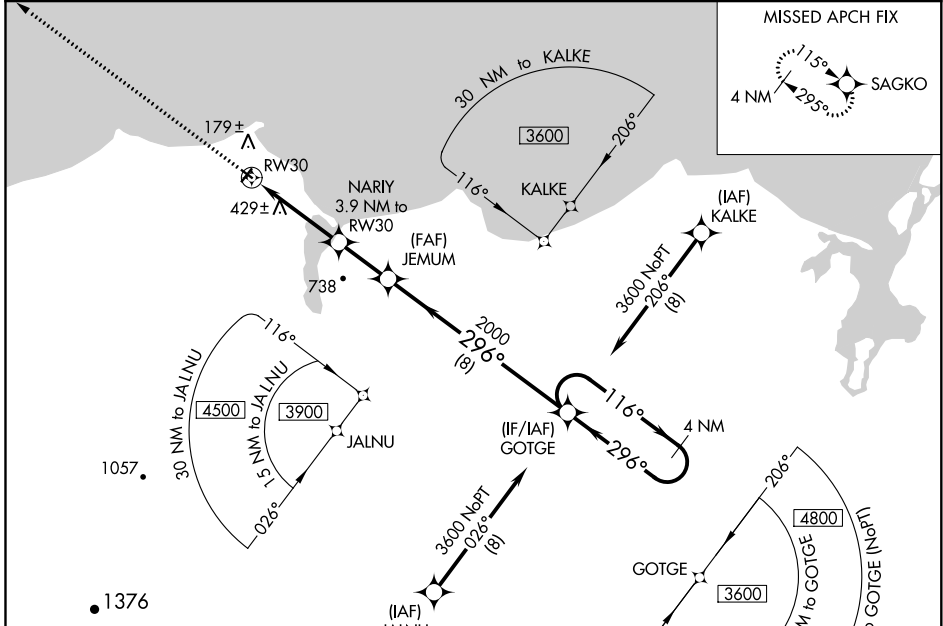
RNAV (GPS) RWY 30

DEERING (DEE)(PADE)

DME/DME RNP-0.3 NA.
 Rwy 30 helicopter visibility reduction below 1 SM NA.
 -40°C Straight-in Rwy 12 NA at night, Circling Rwy 12, 30 NA at night.

MISSED APPROACH: Climb to 3000 direct SAGKO and hold.

ASOS 135.5	ANCHORAGE CENTER 119.2 263.0	KOTZEBUE RADIO 122.25	CTAF 122.9
----------------------	--	---------------------------------	----------------------



3000 SAGKO JEMUM NARIY 3.9 NM to RW30 RW30 GOTGE 4 NM Holding Pattern 3600	Visual Segment - Obstacles.			
	JEMUM NARIY 3.9 NM to RW30 RW30 GOTGE 4 NM Holding Pattern 3600			
3.9 NM 2.2 NM 8 NM				
CATEGORY	A	B	C	D
LNAV MDA	740-1	710 (800-1)	740-2 710 (800-2)	NA
CIRCLING	740-1 710 (800-1)	840-1 810 (900-1)	840-2 1/4 810 (900-2 1/4)	NA

AK, 12 AUG 2021 to 07 OCT 2021

AK, 12 AUG 2021 to 07 OCT 2021