

APP CRS <b>070°</b>	Rwy Idg TDZE Apt Elev	<b>2509</b> <b>1643</b> <b>1643</b>
------------------------	-----------------------------	---

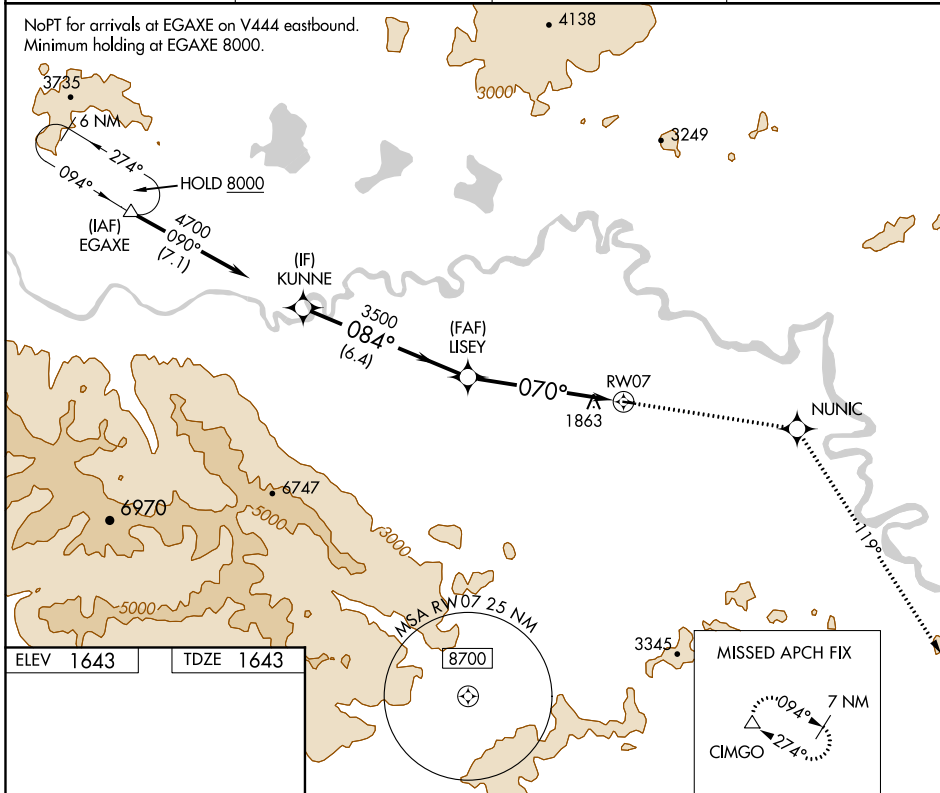
# RNAV (GPS) RWY 7

TOK JUNCTION (6K8) (PFTO)

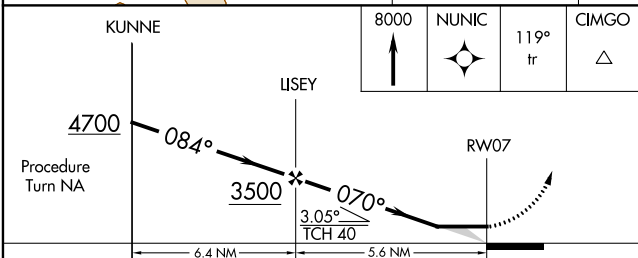
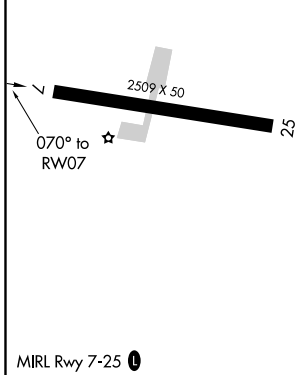
<b>▽</b> <b>▲</b> NA	DME/DME RNP-0.3 NA. Use Northway altimeter setting.	MISSED APPROACH: Climb to 8000 direct NUNIC and via 119° track to CIMGO and hold, continue climb-in-hold to 8000.
-------------------------	--	---

ORT/PAOR ASOS <b>135.4</b>	ANCHORAGE CENTER <b>126.55 323.0</b>	NORTHWAY RADIO <b>122.4</b>	UNICOM <b>122.8</b> (CTAF) <b>0</b>
-------------------------------	---	--------------------------------	--

NoPT for arrivals at EGAXE on V444 eastbound.  
Minimum holding at EGAXE 8000.



ELEV 1643	TDZE 1643
-----------	-----------



CATEGORY	A	B	C	D
LNAV MDA	2500-1 857 (900-1)	2500-1¼ 857 (900-1¼)	2500-2½ 857 (900-2½)	NA
CIRCLING	2540-1¼	897 (900-1¼)	2540-2¾ 897 (900-2¾)	NA

AK, 12 AUG 2021 to 07 OCT 2021

AK, 12 AUG 2021 to 07 OCT 2021