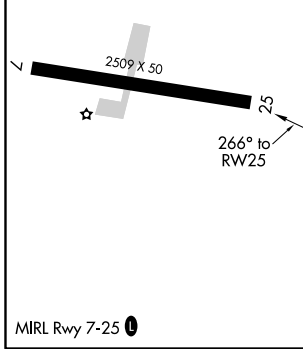
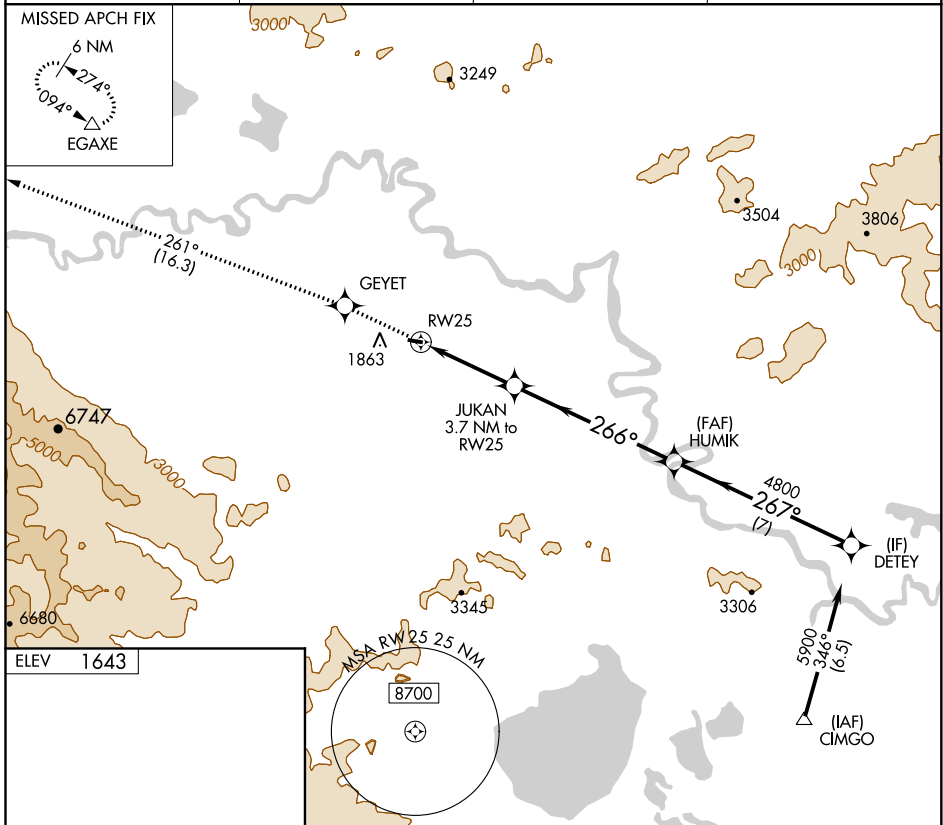


APP CRS 266°	Rwy Idg TDZE Apt Elev	N/A N/A 1643
------------------------	-----------------------------	---

RNAV (GPS)-A

TOK JUNCTION (6K8) (PFTO)

▽ NA	DME/DME RNP-0.3 NA. Use Northway altimeter setting.	MISSED APPROACH: Climb to 8000 direct GEYET and via 261° track to EGAXE and hold, continue climb-in-hold to 8000.	
ORT/PAOR ASOS 135.4	ANCHORAGE CENTER 126.55 323.0	NORTHWAY RADIO 122.4	UNICOM 122.8 (CTAF) ①



8000	GEYET	261° tr	EGAXE	DETEY
↑	✧		△	
JUKAN 3.7 NM to RW25		HUMIK		DETEY
RW25		4800		5900
2740		267°		Procedure Turn NA
3.7 NM		6.3 NM		7 NM
CATEGORY	A	B	C	D
CIRCLING	2580-1¼ 937 (1000-1¼)		NA	

AK, 12 AUG 2021 to 07 OCT 2021

AK, 12 AUG 2021 to 07 OCT 2021