

APP CRS	Rwy ldg	3818
323°	TDZE	667
	Apt Elev	674

RNAV (GPS) Y RWY 32

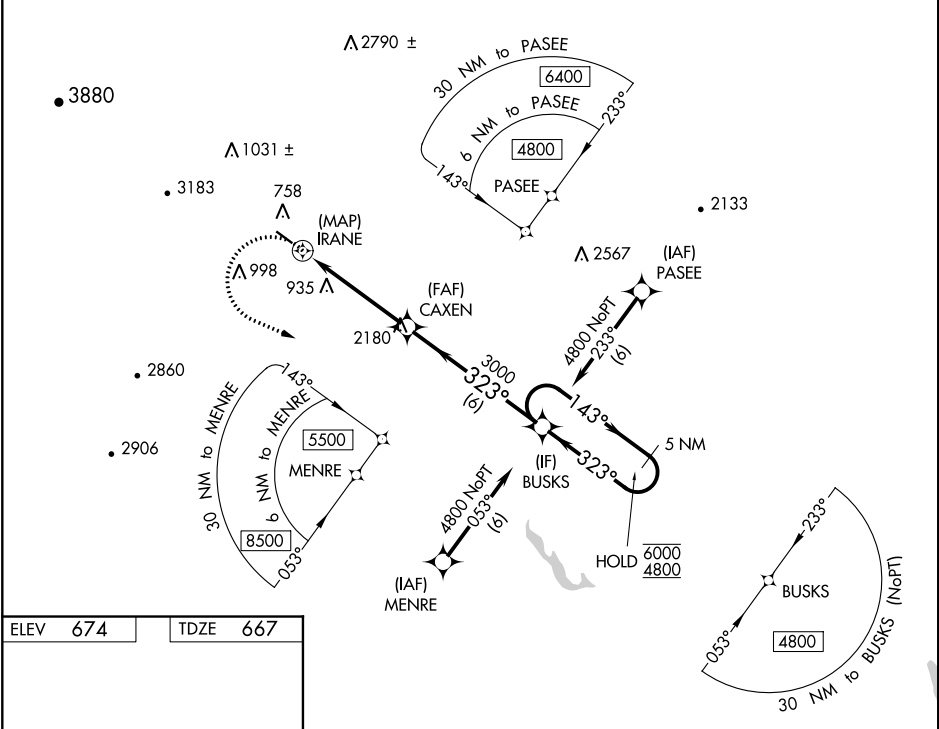
BETHEL RGNL (ØB1)

RNP APCH.

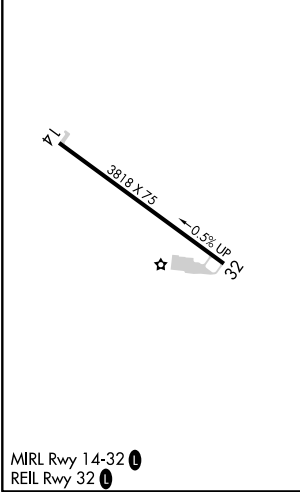
NA Circling Rwy 14 NA at night. Rwy 32 helicopter visibility reduction below 3/4 SM NA. When local altimeter setting not received, use Augusta altimeter setting and increase all MDAs 160 feet. Caution any go-around after passing IRANE, may not provide standard obstacle clearance.

MISSED APPROACH: Climbing left turn to 4800 direct BUSKS and hold then, continue climb-in-hold.

AWOS-AV	PORTLAND APP CON*	CTAF
122.9	125.5 269.35	122.9



ELEV	674	TDZE	667
------	------------	------	------------



4800	BUSKS	5 NM Holding Pattern			
CATEGORY	A	B	C	D	
LNAV MDA	1740-1½	1073 (1100-1½)	NA		
C CIRCLING	1740-1½	2260-1½	NA		
	1066 (1100-1½)	1586 (1600-1½)			

NE-1, 09 SEP 2021 to 07 OCT 2021

NE-1, 09 SEP 2021 to 07 OCT 2021