

APP CRS	Rwy Idg	5324
285°	TDZE	393
	Apt Elev	393

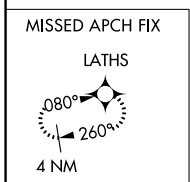
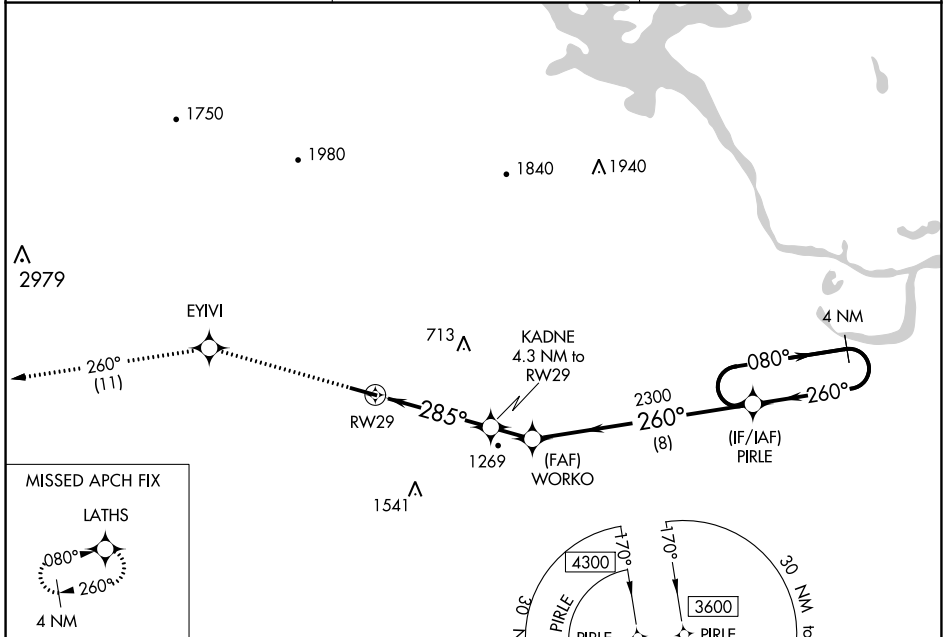
RNAV (GPS) RWY 29

DANVILLE MUNI (32A)

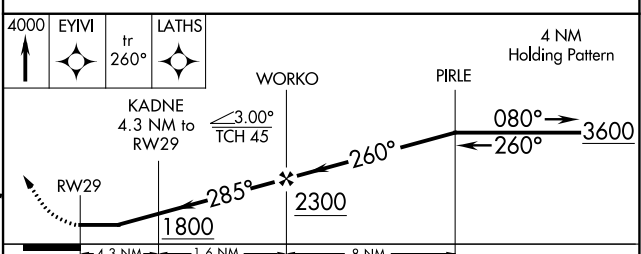
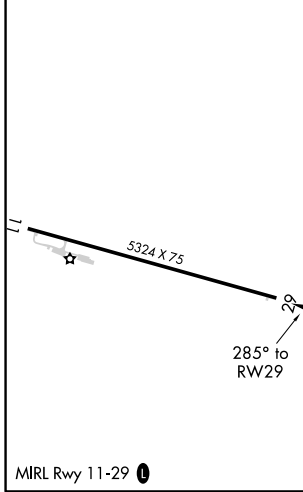
⚠ Circling NA for Cat D south of Rwy 11-29. DME/DME RNP-0.3 NA. Procedure NA at night. Helicopter visibility reduction below 1 SM NA. Use Russellville altimeter setting, when not received procedure NA.

⚠ NA MISSED APPROACH: Climb to 4000 direct EYVI and on track 260° to LATHS and hold.

RUE ASOS 132.475	MEMPHIS CENTER 128.475 377.15	CTAF 122.9
----------------------------	---	----------------------



ELEV 393	TDZE 393
----------	----------



CATEGORY	A	B	C	D
LNAV MDA	840-1	447 (500-1)	840-1 $\frac{3}{8}$	447 (500-1 $\frac{3}{8}$)
C CIRCLING	1040-1 647 (700-1)	1060-1 667 (700-1)	1060-1 $\frac{3}{4}$ 667 (700-1 $\frac{3}{4}$)	1480-3 1087 (1100-3)

SC-1, 09 SEP 2021 to 07 OCT 2021

SC-1, 09 SEP 2021 to 07 OCT 2021