

WAAS CH 65921 W19A	APP CRS 190°	Rwy Idg TDZE 553 Apt Elev 553
--	------------------------	---

RNAV (GPS) RWY 19

HOWARD COUNTY (M77)

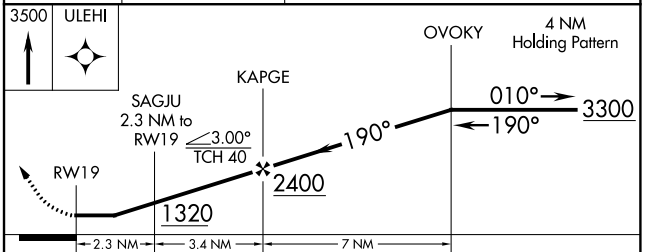
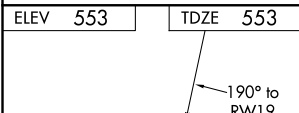
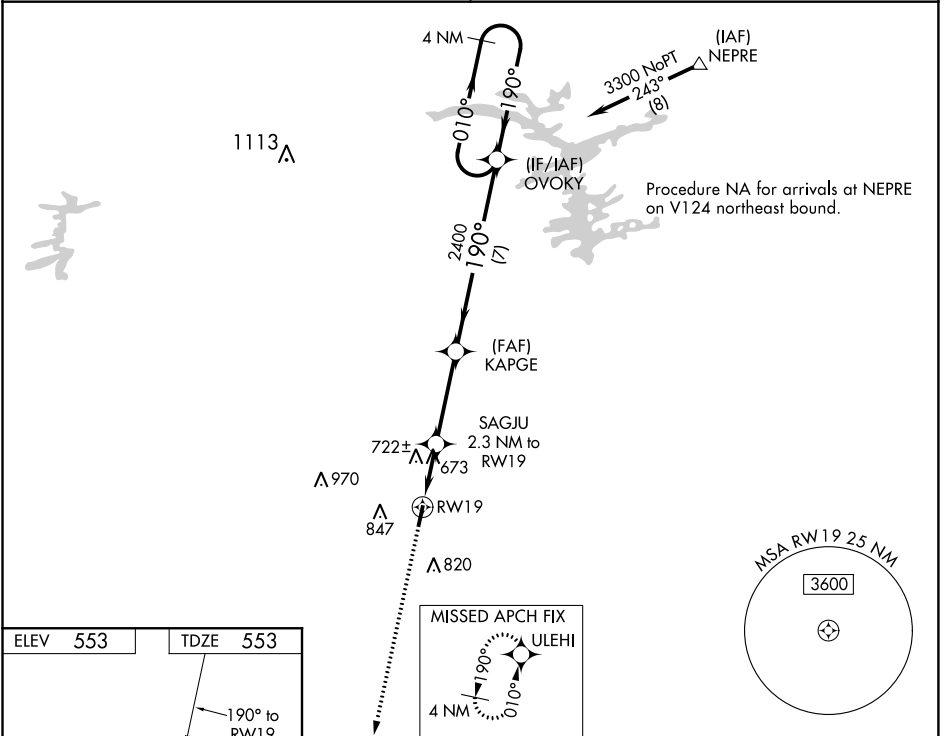
RNP APCH.

▼ Procedure NA at night. Rwy 19 helicopter visibility reduction below 1 SM NA.
 ▲ NA Use DE Queen altimeter setting; when not received, use Texarkana altimeter setting and increase all MDA 20 feet.

MISSED APPROACH: Climb to 3500 direct ULEHI and hold.

FORT WORTH CENTER
123.925 269.475

CTAF
122.9



CATEGORY	A	B	C	D
LP MDA	1080-1	527 (600-1)	NA	
LNAV MDA	1080-1	527 (600-1)	NA	
CIRCLING	1100-1 547 (600-1)	1240-1 687 (700-1)	NA	

MIRL Rwy 1-19

SC-1, 09 SEP 2021 to 07 OCT 2021

SC-1, 09 SEP 2021 to 07 OCT 2021