

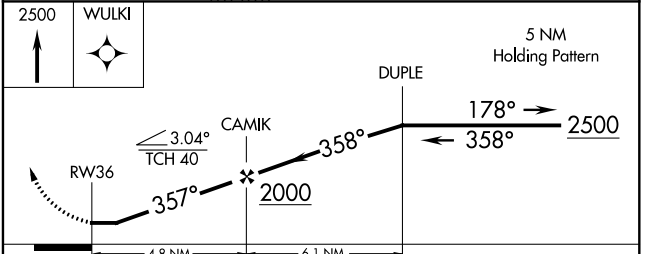
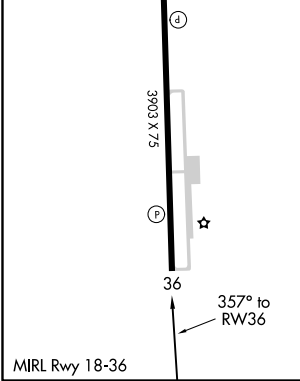
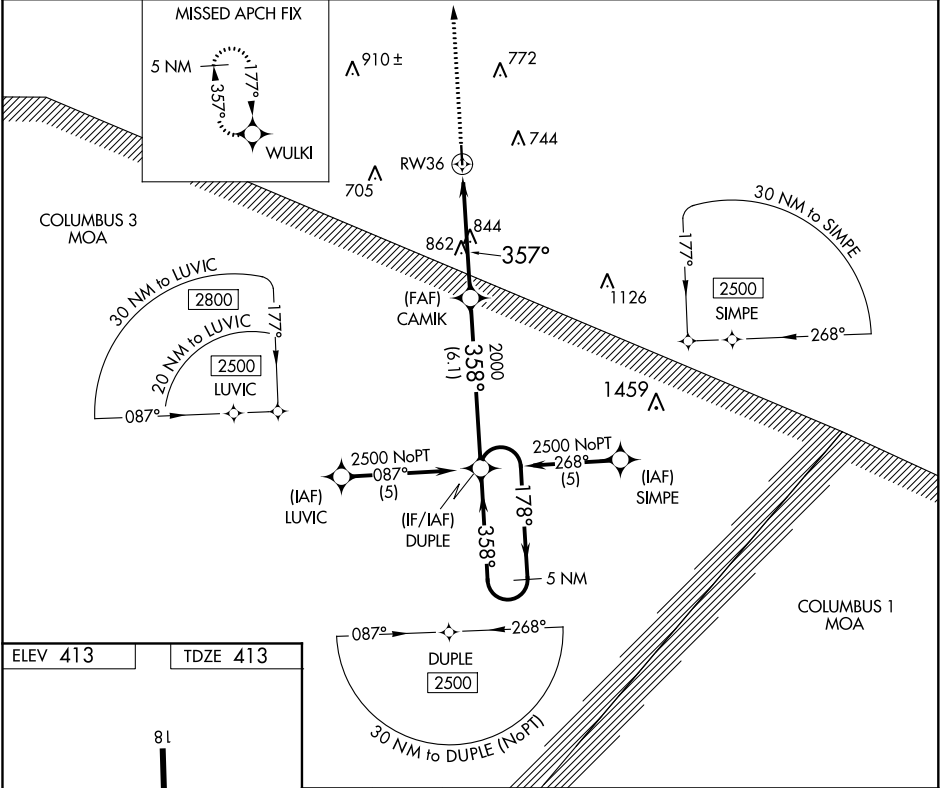
APP CRS **357°**
 Rwy Idg **3903**
 TDZE **413**
 Apt Elev **413**

RNAV (GPS) RWY 36
 NEW ALBANY-UNION COUNTY (M72)

NA Use Tupelo altimeter setting, if not received, use Oxford altimeter setting and increase all MDAs 20 feet. Procedure NA at night. DME/DME RNP-0.3 NA. Visibility reduction by helicopters NA.

MISSED APPROACH: Climb to 2500 direct WULK1 and hold.

TUP ASOS 133.525 **MEMPHIS CENTER 135.9 273.55** **UNICOM 122.8 (CTAF)**



CATEGORY	A	B	C	D
LNAV MDA	1220-1 807 (900-1)	1220-1¼ 807 (900-1¼)	1220-2¼ 807 (900-2¼)	NA
CIRCLING	1220-1 807 (900-1)	1220-1¼ 807 (900-1¼)	1220-2¼ 807 (900-2¼)	NA

SC-4, 09 SEP 2021 to 07 OCT 2021

SC-4, 09 SEP 2021 to 07 OCT 2021