

WAAS CH <b>82341</b> <b>W31A</b>	APP CRS <b>313°</b>	Rwy Idg TDZE Apt Elev	<b>3800</b> <b>1885</b> <b>1885</b>
--	------------------------	-----------------------------	---

# RNAV (GPS) RWY 31

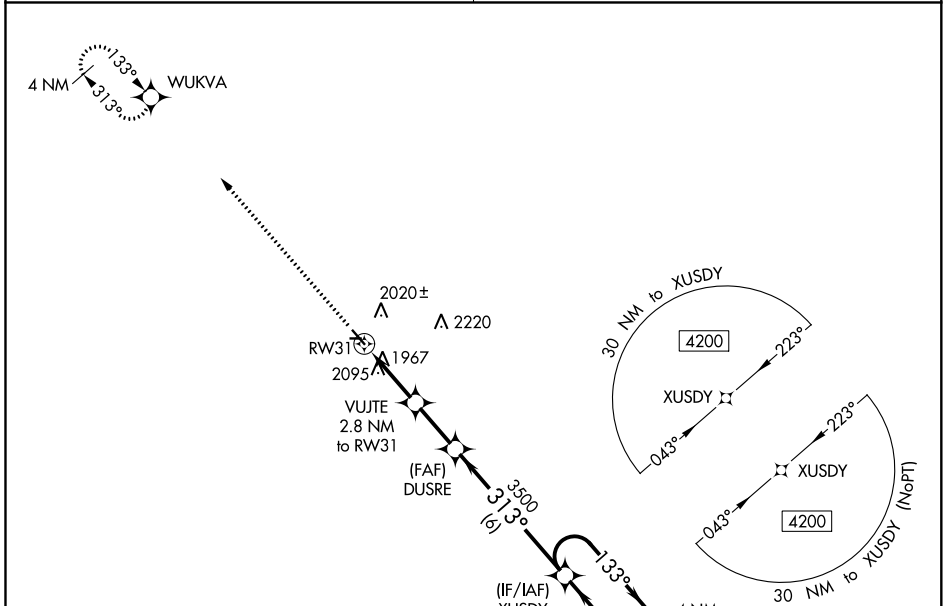
ONIDA MUNI (98D)

**▽** DME/DME RNP-0.3 NA. VDP NA when using Pierre altimeter setting. When local altimeter setting not received, use Pierre altimeter setting: increase all MDAs 80 feet and LP Cat C visibility 1/8 SM and LNAV and Circling Cat C visibility 1/4 SM.

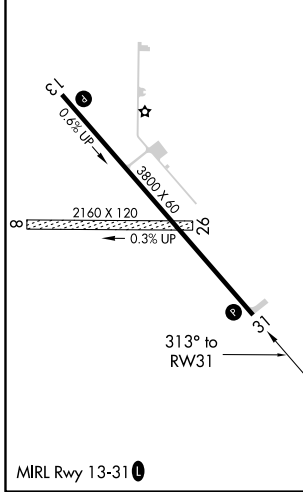
**▲** NA

MISSED APPROACH: Climb to 4100 direct WUKVA and hold.

AWOS-2 <b>122.9 (CTAF) 0</b>	MINNEAPOLIS CENTER <b>125.1 269.1</b>
---------------------------------	--



ELEV 1885	TDZE 1885
-----------	-----------



4100 WUKVA		VUJTE 2.8 NM to RWY 31		DUSRE		XUSDY 4 NM Holding Pattern	
1 NM to RWY 31		3.00° TCH 31		3500		4200	
1 NM		1.8		2.2 NM		6 NM	
CATEGORY	A	B	C	D			
LP MDA	2220-1			335 (400-1)		NA	
LNAV MDA	2360-1		475 (500-1)		2360-1 3/8		475 (500-1 3/8)
CIRCLING	2400-1		515 (600-1)		2520-1 3/4		635 (700-1 3/4)

NC-1, 09 SEP 2021 to 07 OCT 2021

NC-1, 09 SEP 2021 to 07 OCT 2021