

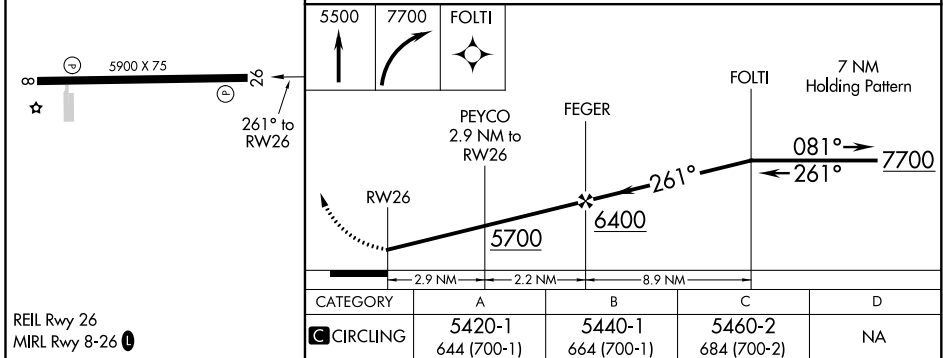
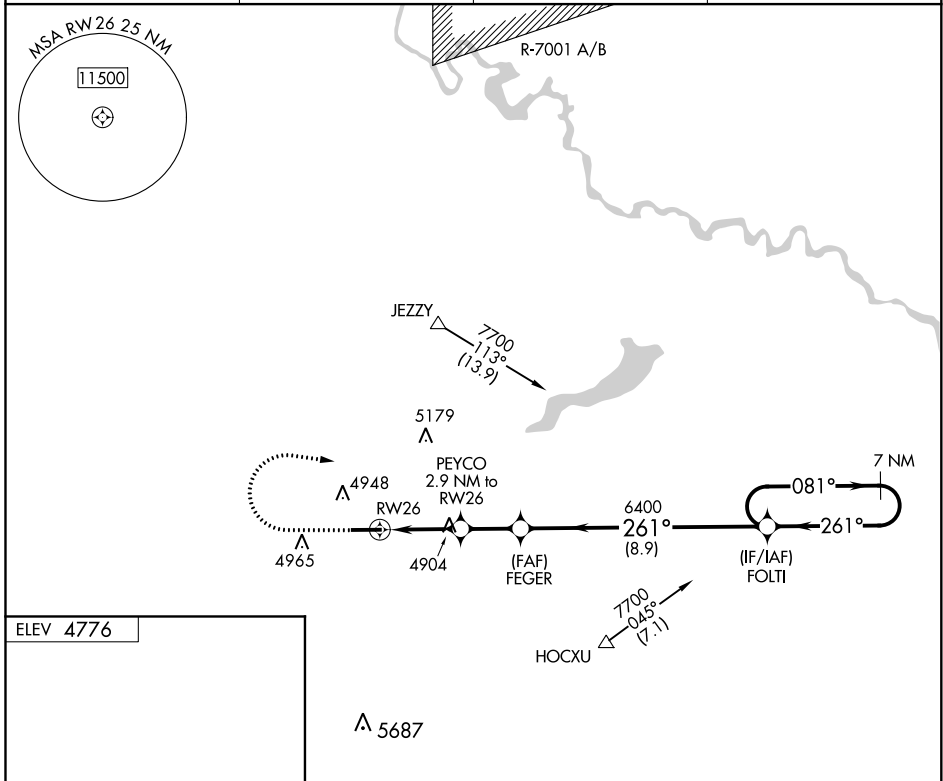
APP CRS 261°	Rwy Idg TDZE Apt Elev	N/A N/A 4776
------------------------	-----------------------------	---

RNAV (GPS)-A
PHIFER AIRFIELD (E.AN)

⚠ NA Use Torrington altimeter setting; when not received, use Western Nebraska Rgnl/ William B Heilig Fld altimeter setting and increase all MDA 100 feet and Cat C visibility ¼ mile. DME/DME RNP-0.3 NA. Helicopter visibility reduction below 1 SM not authorized. Night landing: Rwy 8 NA.

MISSED APPROACH: Climb to 5500 then climbing right turn to 7700 direct FOLTI and hold.

AWOS-3PT 121.125	TOR ASOS 118.375	DENVER CENTER 135.6 363.025	CTAF 122.90
----------------------------	----------------------------	---------------------------------------	-----------------------



NW-1, 09 SEP 2021 to 07 OCT 2021

NW-1, 09 SEP 2021 to 07 OCT 2021