

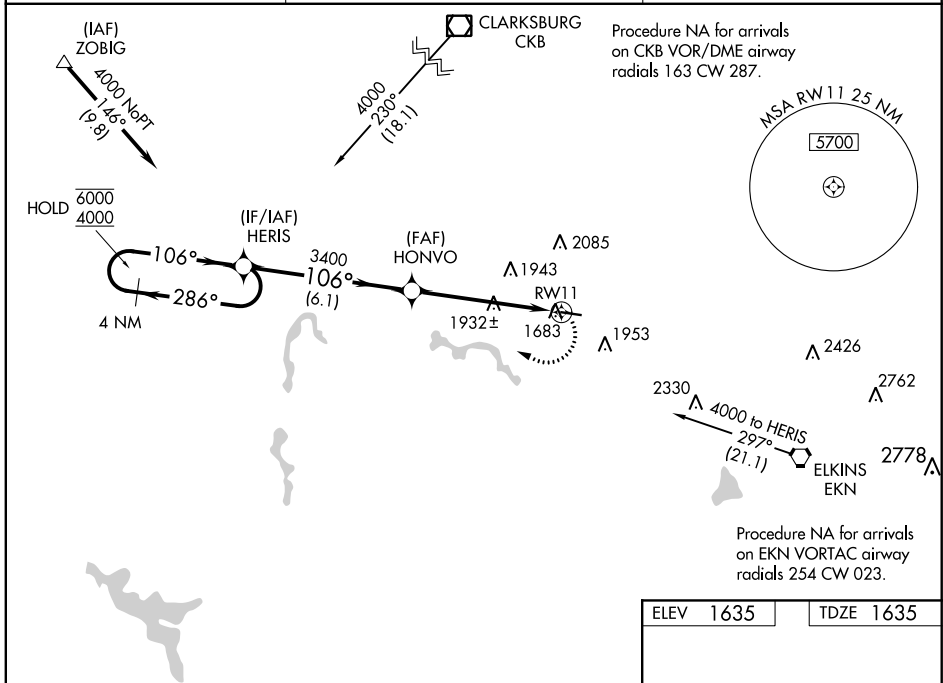
WAAS CH 72724 W11A	APP CRS 106°	Rwy Idg TDZE Apt Elev	4201 1635 1635
--	------------------------	-----------------------------	---

RNAV (GPS) RWY 11

UPSHUR COUNTY RGNL (W22)

RNP APCH. ▼ Rwy 11 helicopter visibility reduction below 3/4 SM NA.	MISSED APPROACH: Climbing right turn to 4000 direct HERIS and hold.
---	---

AWOS-3 119.975	CLARKSBURG APP CON* 121.15 284.65	UNICOM 122.8 (CTAF) 0
--------------------------	---	---------------------------------



NE-4, 09 SEP 2021 to 07 OCT 2021

NE-4, 09 SEP 2021 to 07 OCT 2021

4 NM Holding Pattern		HERIS		4000	HERIS
6000 ← 286°		106° →		1.7 NM to RW11	RW11
4000		3400			
6.1 NM		3.7 NM		1.7 NM	
CATEGORY	A	B	C	D	
LP MDA	2200-1	565 (600-1)	2200-1 5/8 565 (600-1 5/8)	NA	
LNVA MDA	2240-1	605 (700-1)	2240-1 3/4 605 (700-1 3/4)	NA	
CIRCLING	2240-1	605 (700-1)	2260-1 3/4 625 (700-1 3/4)	NA	

ELEV 1635 | TDZE 1635

MIRL Rwy 11-29 0
REIL Rwy 29 0