

WAAS CH 56529 W07A	APP CRS 067°	Rwy Idg TDZE Apt Elev	5099 3490 3490
--	------------------------	-----------------------------	---

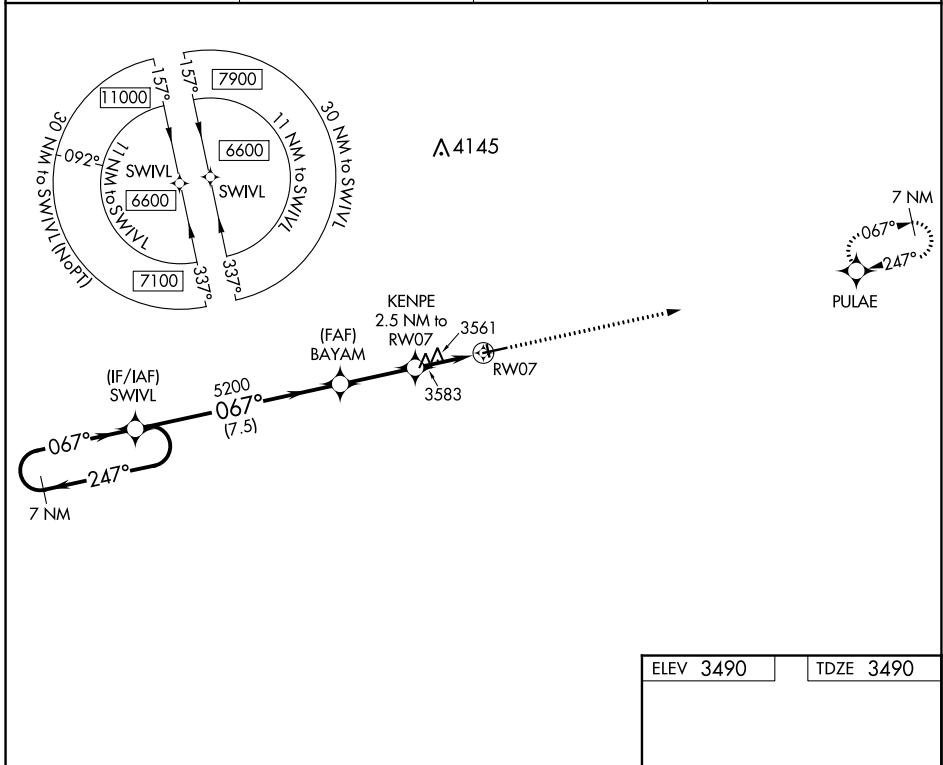
RNAV (GPS) RWY 7

ROUNDUP (RPX)

NA Use Billings altimeter setting, when not received, procedure NA.
When VGSI inop, Straight-in/Circling Rwy 7 procedure NA at night.
DME/DME RNP-0.3 NA. Visibility reduction by helicopters NA.

MISSED APPROACH: Climb to 6300 direct PULAE and hold.

BIL ASOS 126.3	SALT LAKE CENTER 126.85 305.2	UNICOM 122.8 (CTAF)	122.7 0
--------------------------	---	-------------------------------	----------------



NW-1, 09 SEP 2021 to 07 OCT 2021

NW-1, 09 SEP 2021 to 07 OCT 2021

ELEV 3490	TDZE 3490
-----------	-----------

7 NM Holding Pattern

SWIVL 6600

BAYAM 5200

KENPE 3583

RW07 3561

6300 PULAE

VGSI and descent angles not coincident (VGSI Angle 4.00/TCH 43).

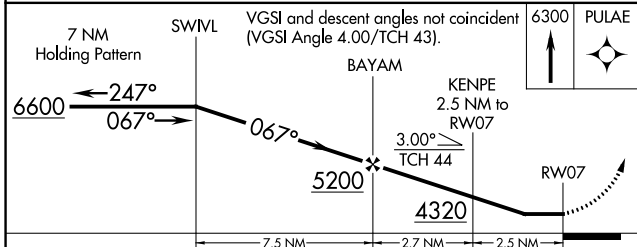
3.00° TCH 44

067° to RW07

0.8% UP

0.7% UP

MIRL Rwy 7-25 0



CATEGORY	A	B	C	D
LP MDA	3940-1 450 (500-1)		3940-1 $\frac{3}{8}$ 450 (500-1 $\frac{3}{8}$)	
LNAV MDA	3960-1 470 (500-1)		3960-1 $\frac{3}{8}$ 470 (500-1 $\frac{3}{8}$)	
CIRCLING	4000-1 510 (600-1)		4000-1 $\frac{1}{2}$ 510 (600-1 $\frac{1}{2}$)	4040-2 550 (600-2)