

APP CRS 196°	Rwy Idg 3995
	TDZE 1276
	Apt Elev 1276

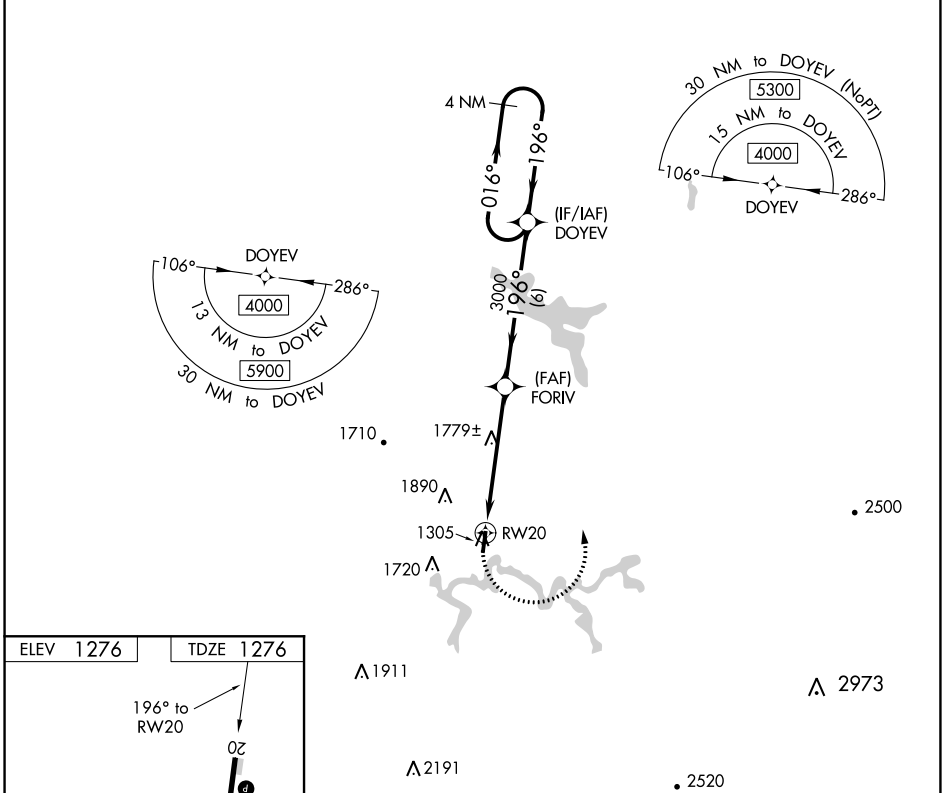
RNAV (GPS) RWY 20

BRAXTON COUNTY (48I)

NA DME/DME RNP-0.3 NA. Procedure NA at night. Helicopter visibility reduction below 1 SM NA. When local altimeter setting not received, use Clarksburg altimeter setting and increase all MDA 260 feet. Increase LNAV Cat A/B visibility ¼ mile, LNAV Cat C visibility ½ mile, and Circling Cat A visibility ¼ mile.

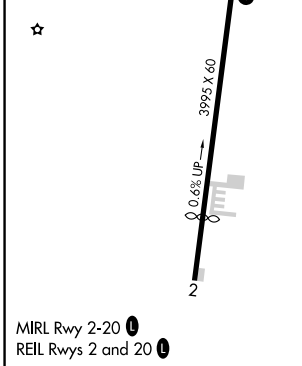
MISSED APPROACH: Climbing left turn to 4000 direct DOYEV and hold.

AWOS-3P 118,225	CLARKSBURG APP CON ★ 121.15 284.65	CTAF 122.9 0
---------------------------	--	------------------------



NE-4, 09 SEP 2021 to 07 OCT 2021

NE-4, 09 SEP 2021 to 07 OCT 2021



4000 DOYEV	VGSI and descent angles not coincident (VGSI Angle 4.00/TCH 40).	DOYEV	4 NM Holding Pattern	
FORIV		RWY 20		
RWY 20		3000		
5.3 NM		6 NM		
CATEGORY	A	B	C	D
LNAV MDA	2060-1 784 (800-1)	2060-1 ¼ 784 (800-1 ¼)	2060-2 ½ 784 (800-2 ½)	NA
C CIRCLING	2060-1 784 (800-1)	2240-1 ½ 964 (1000-1 ½)	2240-3 964 (1000-3)	NA

RNAV (GPS) RWY 20