

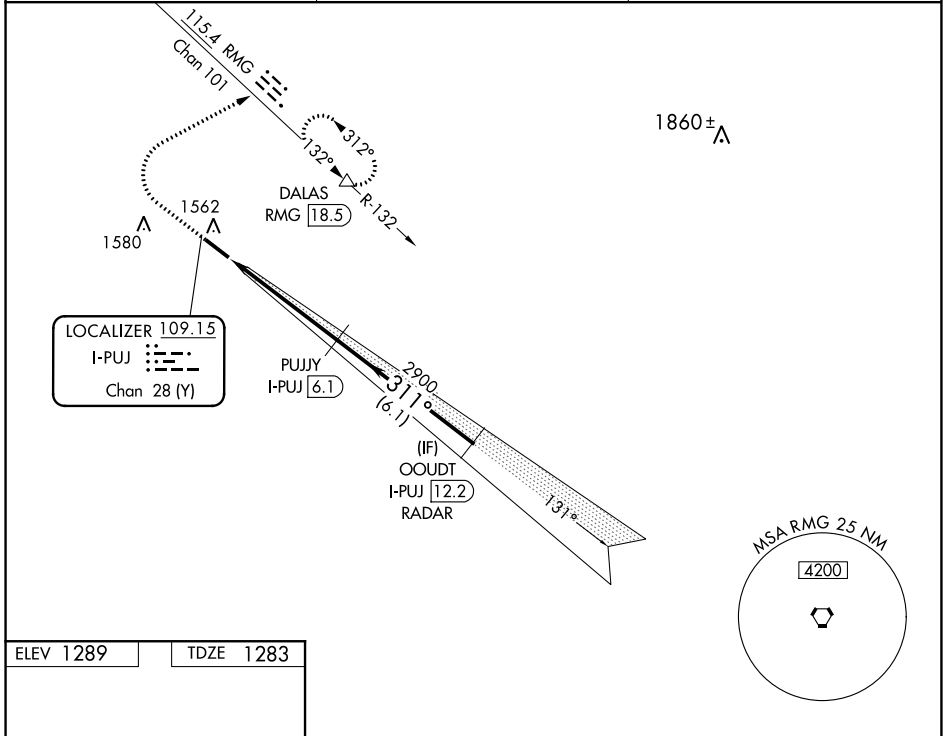
LOC/DME I-PUJ <b>109.15</b> Chan <b>28</b> (Y)	APP CRS <b>311°</b>	Rwy Idg TDZE Apt Elev <b>5505</b> <b>1283</b> <b>1289</b>
--	------------------------	--

**ILS or LOC RWY 31**  
PAULDING NORTHWEST ATLANTA (PUJ)

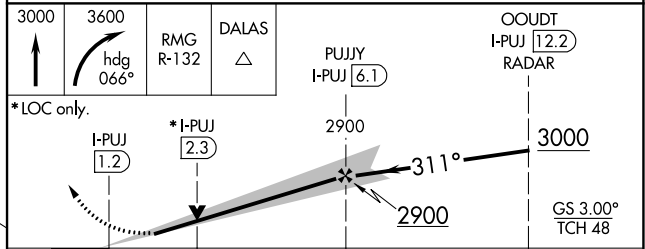
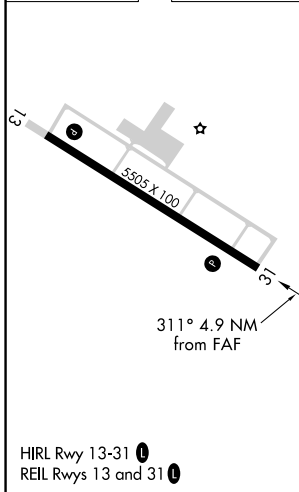
DME required. RADAR required for procedure entry.  
Autopilot coupled approach NA below 1680.

MISSED APPROACH: Climb to 3000 then climbing right turn to 3600 on heading 066° and RMG VORTAC R-132 to DALAS INT/RMG 18.5 DME and hold.

AWOS-3 <b>126.225</b>	ATLANTA APP CON <b>121.0 268.7</b>	UNICOM <b>123.075</b> (CTAF) <b>0</b>
--------------------------	---------------------------------------	--



ELEV 1289	TDZE 1283
-----------	-----------



CATEGORY	A	B	C	D
S-ILS 31	1483- <sup>3</sup> / <sub>4</sub> 200 (200- <sup>3</sup> / <sub>4</sub> )			
S-LOC 31	1680-1	397 (400-1)	1680-1 <sup>1</sup> / <sub>8</sub>	397 (400-1 <sup>1</sup> / <sub>8</sub> )
<b>C</b> CIRCLING	1880-1	591 (600-1)	1940-1 <sup>3</sup> / <sub>4</sub> 651 (700-1 <sup>3</sup> / <sub>4</sub> )	1940-2 651 (700-2)

SE-4, 09 SEP 2021 to 07 OCT 2021

SE-4, 09 SEP 2021 to 07 OCT 2021