

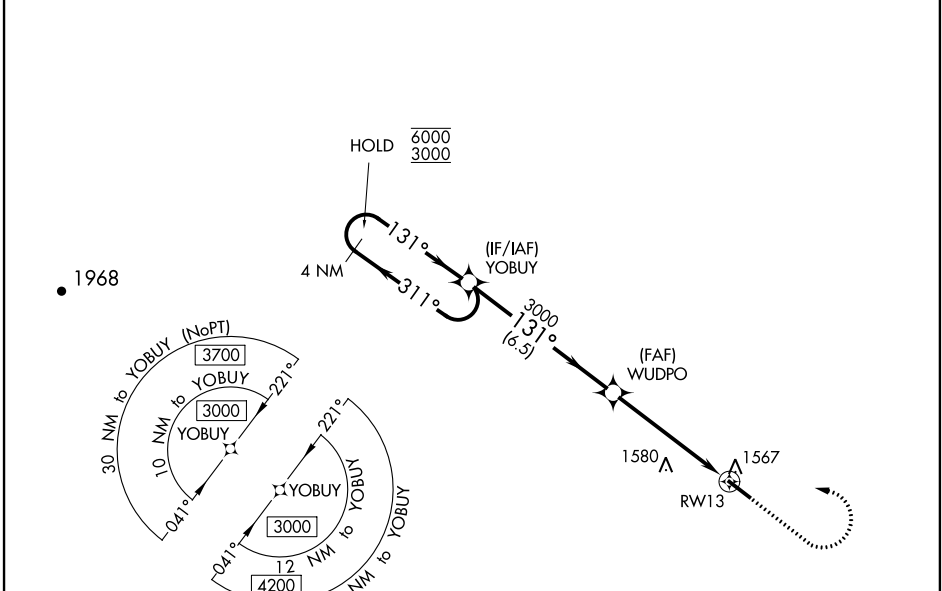
WAAS CH 99720 W13A	APP CRS 131°	Rwy Idg TDZE Apt Elev	5505 1289 1289
--	------------------------	-----------------------------	---

RNAV (GPS) RWY 13

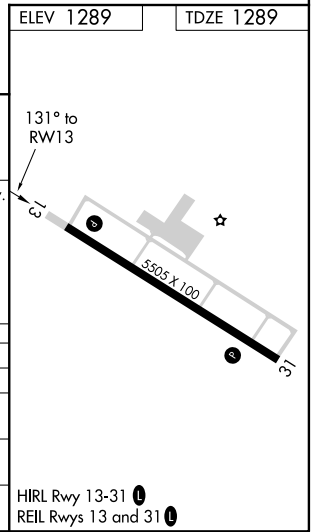
PAULDING NORTHWEST ATLANTA (PUJ)

RNP APCH.		MISSED APPROACH: Climb to 1800 then climbing left turn to 3000 direct YOBUY and hold.
⚠ NA	For uncompensated Baro-VNAV systems, LNAV/VNAV NA below -17°C or above 54°C.	

AWOS-3 126,225	ATLANTA APP CON 121,0 268,7	UNICOM 123,075 (CTAF)
--------------------------	---------------------------------------	---------------------------------



4 NM Holding Pattern YOBUY		WUDPO 3000		RWY 13	
6000 ← 311°		1800 ↑		3000 ↘	
3000 ← 131°		*1.5 NM to RWY 13		*LNAV only.	
GP 3.00°		6.5 NM		3.7 NM	
TCH 50		1.5 NM			
CATEGORY	A	B	C	D	
LPV DA		1507-3/4	218 (300-3/4)		
LNAV/VNAV DA		1763-1 3/8	474 (500-1 3/8)		
LNAV MDA	1820-1	531 (600-1)	1820-1 1/2	531 (600-1 1/2)	
C CIRCLING	1880-1	591 (600-1)	1940-1 3/4	1940-2	651 (700-2)



SE-4, 09 SEP 2021 to 07 OCT 2021

SE-4, 09 SEP 2021 to 07 OCT 2021