

APP CRS	Rwy ldg	<b>3189</b>
<b>195°</b>	TDZE	<b>539</b>
	Apt Elev	<b>539</b>

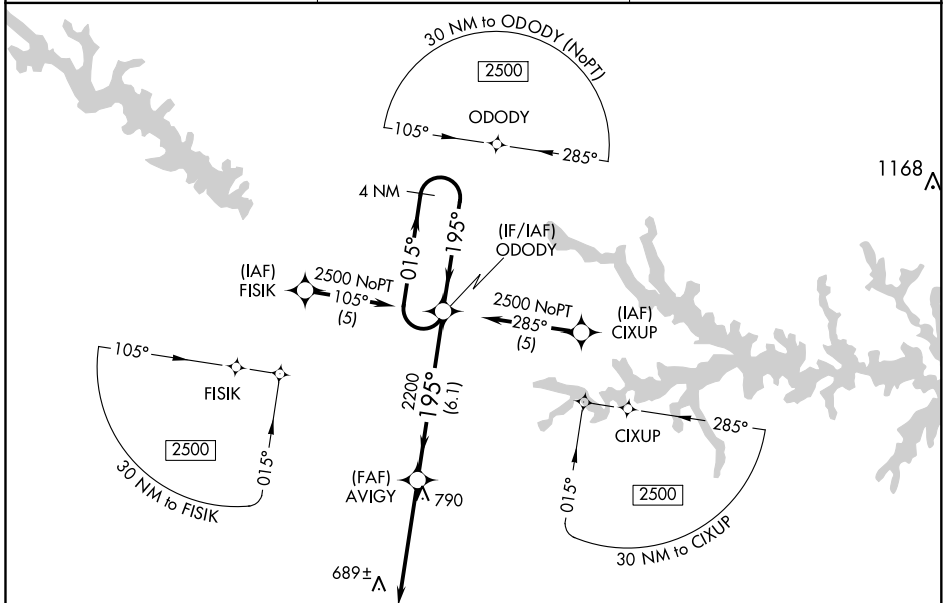
# RNAV (GPS) RWY 19

SALUDA COUNTY (6J4)

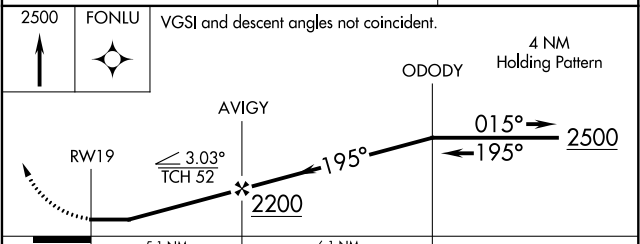
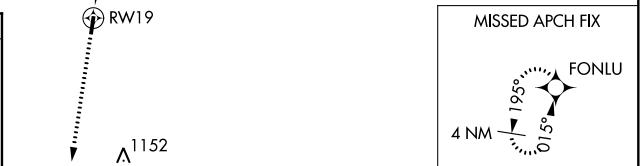
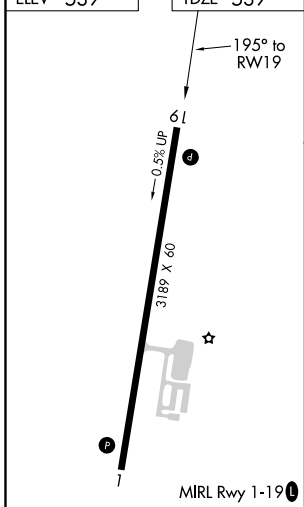
**▽** DME/DME RNP-0.3 NA. Procedure NA at night.  
**△** NA Visibility reduction by helicopters NA. Use Aiken altimeter setting; when not received, use Augusta Rgnl at Bush Fld altimeter setting and increase all MDA 100 feet, LNAV and Circling Cat C visibilities ¼ mile.

MISSED APPROACH: Climb to 2500 direct FONLU and hold.

AIK AWOS-3 <b>118,025</b>	AUGUSTA APP CON ★ <b>119,15</b>	CTAF <b>122.9</b>
------------------------------	------------------------------------	----------------------



ELEV 539	TDZE 539
----------	----------



CATEGORY	A	B	C	D
LNAV MDA	1060-1	521 (600-1)	1060-1½ 521 (600-1½)	NA
CIRCLING	1060-1	521 (600-1)	1160-1¾ 621 (700-1¾)	NA

SE-2, 09 SEP 2021 to 07 OCT 2021

SE-2, 09 SEP 2021 to 07 OCT 2021