

WAAS CH 50538 W16A	APP CRS 164°	Rwy ldg TDZE Apt Elev	3400 1162 1162
--	------------------------	-----------------------------	---

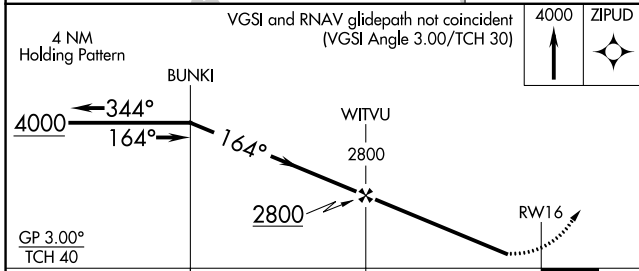
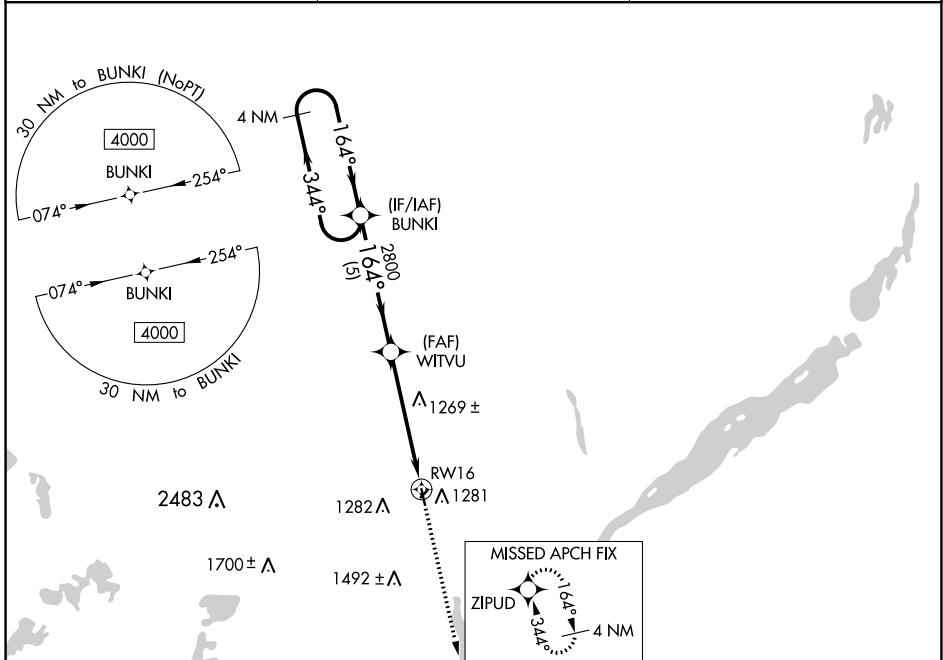
RNAV (GPS) RWY 16

SISSETON MUNI (8D3)

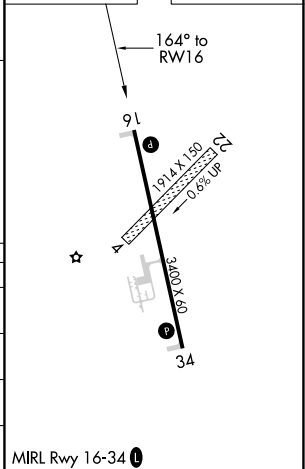
⚠ Circling NA to Rwy 4 and 22. Baro-VNAV NA. DME/DME RNP-0.3 NA. Helicopter visibility reduction below $\frac{3}{4}$ SM NA. Use Wheaton altimeter setting; when not received, use Ortonville altimeter setting and increase LPV DA to 1496 feet, LNAV/VNAV DA to 1516 feet and all MDA 20 feet. Increase LNAV/VNAV Cats A/B visibility $\frac{1}{8}$ mile.

⚠ NA MISSED APPROACH: Climb to 4000 direct ZIPUD and hold, continue climb-in-hold to 4000.

ETH AWOS-3 118.775	MINNEAPOLIS CENTER 128.5 306.2	CTAF 122.90
------------------------------	--	-----------------------



ELEV	1162	TDZE	1162
------	------	------	------



CATEGORY	A	B	C	D
LPV DA	1478-1 $\frac{1}{8}$	316 (400-1 $\frac{1}{8}$)		NA
LNAV/VNAV DA	1498-1 $\frac{1}{8}$	336 (400-1 $\frac{1}{8}$)		NA
LNAV MDA	1600-1	438 (500-1)		NA
C CIRCLING	1660-1 498 (500-1)	1700-1 538 (600-1)		NA

MIRL Rwy 16-34 **Ⓛ**

NC-1, 09 SEP 2021 to 07 OCT 2021

NC-1, 09 SEP 2021 to 07 OCT 2021