

WAAS CH 57940 W35A	APP CRS 351°	Rwy Idg TDZE Apt Elev	5943 675 693
--	------------------------	-----------------------------	---

RNAV (GPS) RWY 35

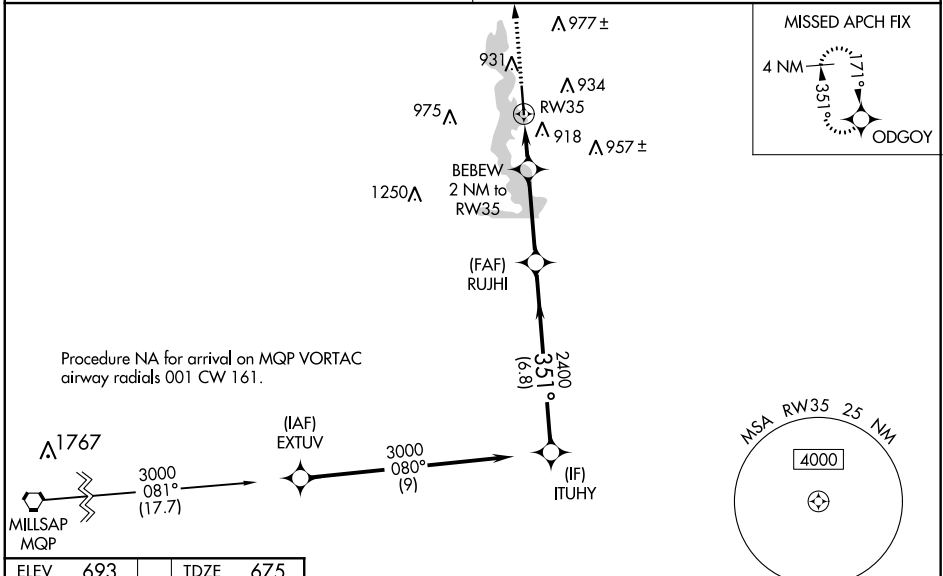
KENNETH COPELAND (4T2)

RNP APCH.

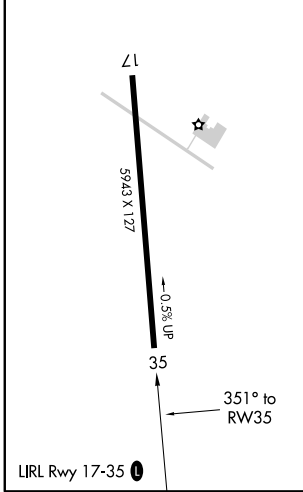
NA Baro-VNAV and VDP NA when using Fort Worth Meacham Intl altimeter setting. Rwy 35 helicopter visibility reduction below 3/4 SM NA. For uncompensated Baro-VNAV systems, LNAV/VNAV NA below -16°C or above 54°C. Obtain local altimeter setting on CTAF; when not received, use Fort Worth Meacham Intl altimeter setting: Increase LPV DA to 955 feet; increase LNAV/VNAV DA to 1144 feet; increase all MDA 40 feet and LNAV Cat C/D and Circling Cat C visibility to 1/4 SM.

MISSED APPROACH:
Climb to 3100 direct ODGOY and hold.

FORT WORTH CENTER 125.8 257.95	UNICOM 123.075 (CTAF)
--	---------------------------------



ELEV 693	TDZE 675
----------	----------



3100	ODGOY	ITUHY			
*LNAV only.	BEBEW 2 NM to RW35	RUJHI 2400	351° 3000		
RW35	*1.5 NM to RW35	1320*	2400	GP 3.00° TCH 40	
	1.5 NM	0.5 NM	3.3 NM	6.8 NM	
CATEGORY	A	B	C	D	
LPV DA	925-1 250 (300-1)				
LNAV/VNAV DA	1114-1½ 439 (500-1½)				
LNAV MDA	1180-1 505 (500-1)		1180-1¾ 505 (500-1¾)		
CIRCLING	1240-1 547 (600-1)		1340-1¾ 647 (700-1¾)		1440-2½ 747 (800-2½)

SC-2, 09 SEP 2021 to 07 OCT 2021

SC-2, 09 SEP 2021 to 07 OCT 2021