

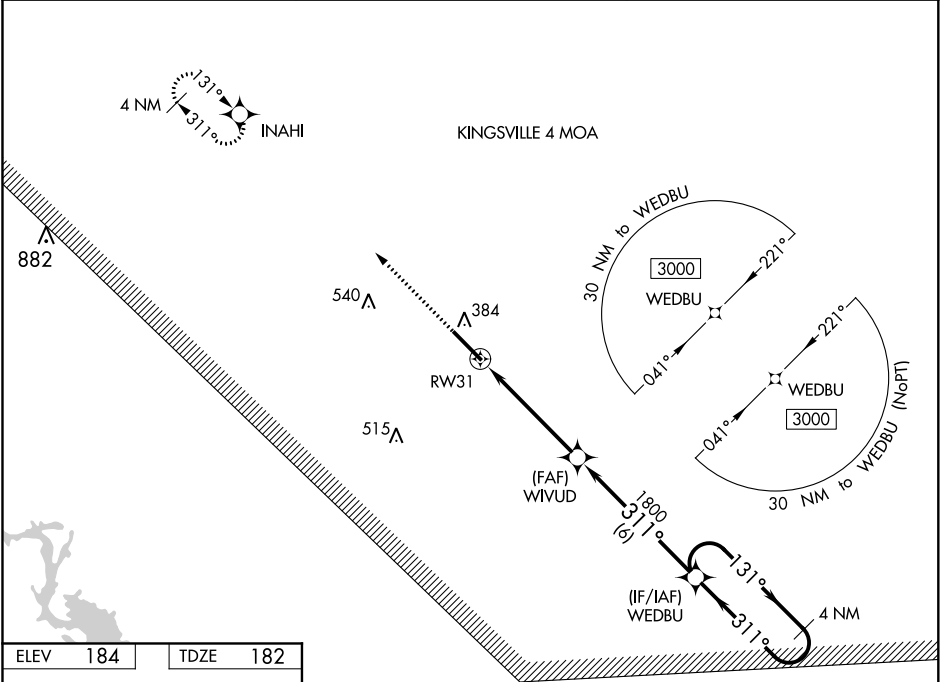
WAAS CH <b>77940</b> <b>W31A</b>	APP CRS <b>311°</b>	Rwy Idg TDZE <b>182</b> Apt Elev <b>184</b>	<b>8000</b>
--	------------------------	---	-------------

# RNAV (GPS) RWY 31

CHASE FIELD INDUSTRIAL (TX2)

<b>▲</b> NA	Baro-VNAV NA. DME/DME RNP-0.3 NA.	MISSED APPROACH: Climb to 3000 direct INAHI and hold.
-------------	-----------------------------------	---

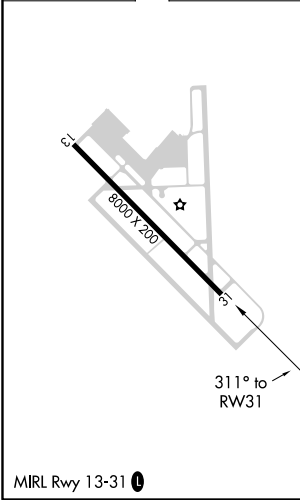
BEA AWOS-3 <b>118.675</b>	HOUSTON CENTER <b>134.6 322.5</b>	UNICOM <b>122.8 (CTAF) 0</b>
------------------------------	--------------------------------------	---------------------------------



SC-3, 09 SEP 2021 to 07 OCT 2021

SC-3, 09 SEP 2021 to 07 OCT 2021

ELEV <b>184</b>	TDZE <b>182</b>
-----------------	-----------------



3000	INAHI	4 NM Holding Pattern		
WEDBU	WIVUD	WEDBU		
1800	1800	131°		
311°	311°	3000		
5 NM	6 NM	GP 3.00° TCH 50		
CATEGORY	A	B	C	D
LPV DA	432-7/8 250 (300-7/8)			
LNAV/VNAV DA	461-7/8 279 (300-7/8)			
LNAV MDA	620-1	438 (500-1)	620-1 1/4	438 (500-1 1/4)
<b>C</b> CIRCLING	720-1	536 (600-1)	720-1 1/2 536 (600-1 1/2)	920-2 1/4 736 (800-2 1/4)