

**GRAND MARAIS** (Y98) 3 SE UTC-5(-4DT) N46°37.22' W85°55.21'

GREEN BAY

838 NOTAM FILE GRB  
**RWY 14-32:** 2800X100 (TURF) 0.3% up NW  
**RWY 14:** Trees.  
**RWY 32:** Trees.  
**RWY 05-23:** 2600X150 (TURF)  
**RWY 05:** Thld dsplcd 400'. Trees.  
**RWY 23:** Trees.

**AIRPORT REMARKS:** Unattended. Arpt CLOSED Oct 15-May 15. Rwsy not plowed winters. Rwy 05-23 marked with 3' yellow cones. Rwy 05 dsplcd thld marked with yellow cones. Rwy 14-32 marked with 3' yellow cones. Rwy 05-23 and Rwy 14-32 surface rough.

**AIRPORT MANAGER:** (734) 497-0207

**COMMUNICATIONS:** CTAF/UNICOM 122.7

**CLEARANCE DELIVERY PHONE:** For CD ctc Minneapolis ARTCC at 651-463-5588.

**GRAND RAPIDS**

**GERALD R FORD INTL** (GRR)(KGRR) 6 SE UTC-5(-4DT) N42°52.85' W85°31.37'

CHICAGO  
 H-5E, 10F, L-281  
 IAP, AD

794 B LRA Class I, ARFF Index C NOTAM FILE GRR MON Airport

**RWY 08R-26L:** H10001X150 (CONC-GRVD) D-190, 2D-350

PCN 62 R/B/W/T HIRL  
**RWY 08R:** MALSR. RVR-TR  
**RWY 26L:** MALSR. PAPI(P4L)—GA 3.0° TCH 73'. RVR-TR Bldg.  
**RWY 17-35:** H8501X150 (CONC-GRVD) D-190, 2S-175, 2D-350  
 PCN 60 R/B/W/T HIRL  
**RWY 17:** REIL. PAPI(P4R)—GA 3.0° TCH 50'. RVR-TR  
**RWY 35:** MALSR. PAPI(P4R)—GA 3.0° TCH 74'. RVR-TR  
**RWY 08L-26R:** H5001X100 (ASPH-GRVD) S-110, D-160  
 PCN 45 F/C/X/T MIRL  
**RWY 08L:** REIL. VASI(V4L)—GA 3.0° TCH 45'.  
**RWY 26R:** REIL. VASI(V4L)—GA 3.0° TCH 33'.

**RUNWAY DECLARED DISTANCE INFORMATION**

**RWY 08L:**TORA-5001 TODA-5001 ASDA-5001 LDA-5001  
**RWY 08R:**TORA-10001 TODA-10001 ASDA-10001 LDA-10001  
**RWY 17:** TORA-8501 TODA-8501 ASDA-8501 LDA-8501  
**RWY 26L:**TORA-10001 TODA-10001 ASDA-10001 LDA-10001  
**RWY 26R:**TORA-5001 TODA-5001 ASDA-5001 LDA-5001  
**RWY 35:** TORA-8501 TODA-8501 ASDA-8501 LDA-8501

**SERVICE:** S4 FUEL 100LL, JET A OX 1, 3 LGT When ATCT clsd actvt

MALSR Rwy 08R, 26L, & 35; REIL Rwy 08L, 26R, & 17; HIRL Rwy 08R-26L & 17-35; MIRL Rwy 08L-26R—CTAF.

**NOISE:** Noise abatement procedures: Rwy 08R dep on rwy heading until reaching the hwy E of arpt; Rwy 26L on apch to arpt turn final at hwy east of arpt.

**AIRPORT REMARKS:** Attended continuously. Birds on and invof arpt. PPR for acft with 171' wingspan or larger. Pushback advisories on the terminal ramp are not provided by ATC. Twy F north of Twy V, Twy J btn Twy F and Twy J3 and Twy G clsd to acft over 100,000 lbs; Twy F, south of Twy V and Twy J east of Twy F and west of Twy J3 clsd to acft over 47,000 lbs. Twy Y 400' north of Twy D clsd to acft over 100,000 lbs; Twy R north of Twy D clsd to acft over 175,000 lbs. Twy R north of Twy D, Twy Y north of Twy D, Twy Z north of Twy D and Twy N are non-movement areas. Snow removal personnel will monitor CTAF when twr is clsd. LRA: Mon-Fri 2 hours PPR for customs call 616-942-5245, pager 616-249-5380. Call prior to 2100Z† on preceding Friday for after hours service. Air carrier apron clsd to general aviation acft. Ctc FBO for their hrs of opn.

**AIRPORT MANAGER:** 616-233-6000

**WEATHER DATA SOURCES:** ASOS 118.725 (616) 575-1953. WSP.

**COMMUNICATIONS:** CTAF 135.65 ATIS 118.725 UNICOM 122.95

GRAND RAPIDS RCO 122.25 (LANSING RADIO)

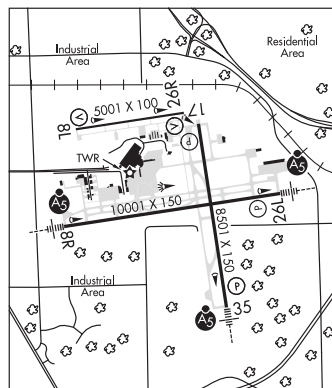
Ⓡ GREAT LAKES APP/DEP CON 124.6 (North) 128.4 (South) (1030-0500Z‡)

Ⓡ CHICAGO CENTER APP/DEP CON 128.4 (0500-1030Z‡)

GRAND RAPIDS TOWER 135.65 (1030-0500Z‡) GND CON 121.8 CLNC DEL 119.3

**CLEARANCE DELIVERY PHONE:** For CD when twr clsd ctc Great Lakes Apch at 269-459-3344, when Apch clsd ctc Chicago ARTCC at 630-906-8921.

**AIRSPACE:** CLASS C svc ctc APP CON svc 1030-0500Z‡; other times CLASS E.



CONTINUED ON NEXT PAGE

## CONTINUED FROM PRECEDING PAGE

## RADIO AIDS TO NAVIGATION: NOTAM FILE GRR.

**VICTORY (H) VORW/DME** 115.95 VIO Chan 106(Y) N42°47.20' W85°29.82' 353° 5.8 NM to fld. 802/4W. DME unmonitored.

DME unusable:

011°-314° byd 30 NM blo 3,000'

**KNOBS NDB (LOMW)** 263 GR N42°53.74' W85°22.72' 268° 6.4 NM to fld. 797/6W.

**ILS 108.3 I-CYZ** Rwy 08R. Class IA. Unmonitored when ATCT clsd.

**ILS 109.7 I-GRR** Rwy 26L. Class IB. LOM KNOBS NDB. Unmonitored when ATCT clsd. LOM unmonitored.

**ILS 111.9 I-DVS** Rwy 35. Class IIE. Unmonitored when ATCT clsd.

**ASR** (1030-0500Z)

**GRATIOT COMMUNITY** (See ALMA on page 147)

**GRAYLING AAF** (GOV)(KGOV) MIL/CIV A 1 NW UTC-5(-4DT) N44°40.82' W84°43.73'

**LAKE HURON**

1158 B TPA—See Remarks ARFF Index—See Remarks NOTAM FILE GOV

**H-2L, L-31C**

**RWY 14-32:** H5005X150 (ASPH) PCN 77 F/B/W/T MIRL

**IAP, AD**

**RWY 14:** REIL. PAPI(P4L)—GA 3.0° TCH 30'. Tree. Rgt tfc.

**RWY 32:** REIL. PAPI(P4L)—GA 3.5° TCH 34'. Thld dspcd 293'. Road.

**RWY 05-23:** H5000X150 (CONC) PCN 26 R/C/W/T MIRL

**RWY 05:** REIL. PAPI(P4L)—GA 4.0° TCH 41'. Trees.

**RWY 23:** REIL. PAPI(P4L)—GA 3.0° TCH 30'. Trees. Rgt tfc.

**SERVICE: FUEL** 100LL, JET A+ **LGT** Actvt REIL Rwy 14, 32, 05, & 23;

PAPI Rwy 14, 32, 05, & 23; MIRL Rwy 14-32 & 05-23—CTAF.

**MILITARY— FUEL** 100LL, Jet A+ avbl H24 self ser via credit card.

**AIRPORT REMARKS:** Opr Mon-Fri 1300-0100Z‡ Oct-Mar; Mon-Fri 1300-0500Z‡ Apr-Sep. No ser federal hols. Wildlife on and invof arpt. All airfield signs unlgtd. Rwy end 05 CLOSED for ldg. For ficon C989-344-4301, unmon outside oprg hrs. Extsv mil hel tfc Jun thru Aug. Rwy 05-23 PCN 18 drg frost conds. Rwy 14-32 PCN 59 drg frost conds. Civilian trml bldg acs 5-3-2-1-\*. ARFF Index: ARFF capabilities ltd.

**MILITARY REMARKS: TFC PAT** TPA—Rotary wing 1700 (542), fixed wing 2200 (1042), overhead 2700 (1542). **MISC** All hazus cargo must be apvd by airfield mgr. Ser unavbl exc 24 hr PPR 989-344-4301.

**AIRPORT MANAGER:** 989-344-4301

**WEATHER DATA SOURCES:** ASOS (989) 348-3127 Us army an/fmq-23.

**COMMUNICATIONS:** CTAF 126.2 **D-ATIS** 119.075

**MINNEAPOLIS CENTER APP/DEP CON** 125.475 269.45

**TOWER** 126.2 (Opr 1200-2400Z‡) **GND CON** 121.9

**AIRSPACE:** CLASS D svc 1200-2400Z‡; other times CLASS E.

**RADIO AIDS TO NAVIGATION:** NOTAM FILE TVC.

**TRAVERSE CITY (H) VORW/DME** 114.6 TVC Chan 93 N44°40.07' W85°33.00' 090° 35.2 NM to fld. 912/2W.

DME unusable:

050°-060° byd 9 NM

061°-120°

156°-158° byd 38 NM blo 5,000'

VOR unusable:

024°-034° byd 10 NM blo 5,000'

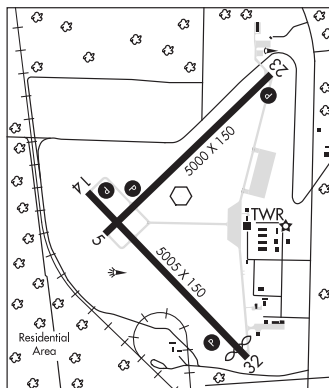
050°-060° byd 9 NM

061°-120°

210°-228° byd 10 NM

**(T) VORW** 109.8 CGG N44°40.89' W84°43.72' at fld. 1153/6W. NOTAM FILE GOV. VOR unmonitored.

**NDB (MHW)** 359 GYG N44°45.00' W84°49.69' 140° 6.0 NM to fld. 1174/6W. NOTAM FILE LAN.

**GREEN LAKE** (See INTERLOCHEN on page 194)